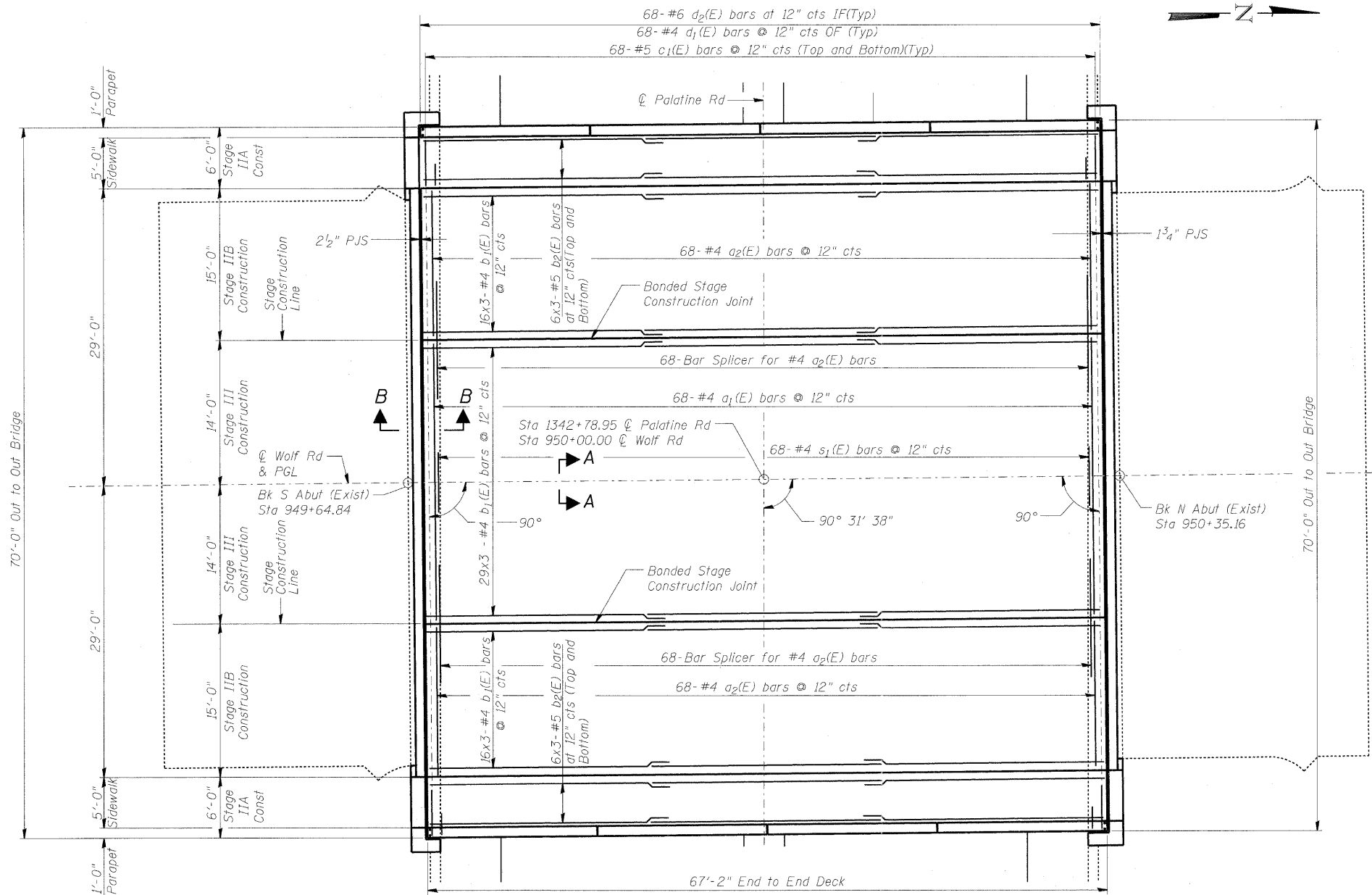
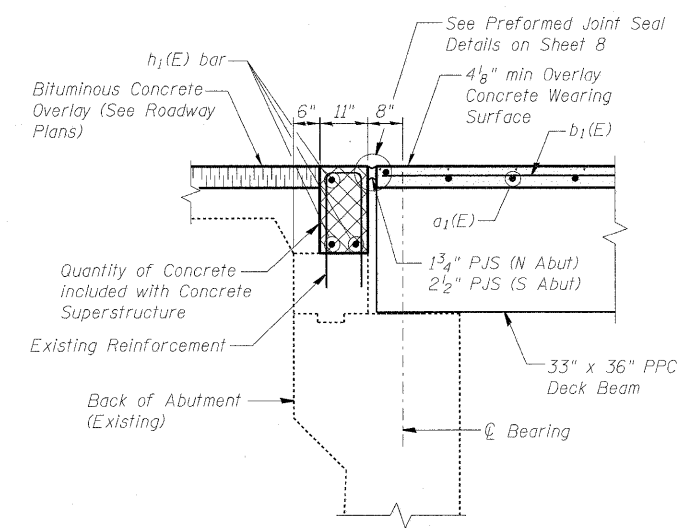


STATE OF ILLINOIS  
DEPARTMENT OF TRANSPORTATION

ROUTE NO.	SECTION	COUNTY	SHEET	SHEET NO.
FAP 305	*	Cook	72	64
ILLINOIS FED. AID PROJECT-				14 SHEETS
Contract No. 62853 *2004-108 BR				



SECTION A-A  
THROUGH LONGITUDINAL JOINT

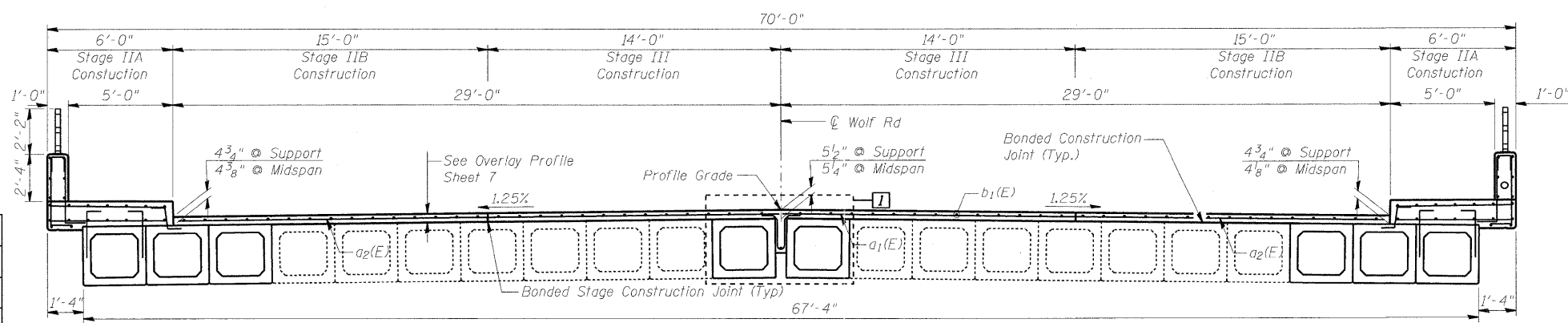


SECTION B-B

- NOTES
1. Bars Indicated thus: 30x3 - #4 etc indicates 30 lines of bars with 3 lengths per line.
  2. EF = Each Face, OF = Outer Face, IF = Inner Face
  3. For Parapet Elevation, Sidewalk Details and Bill of Material See Sheet 7.
  4. See Electrical Plans for proposed conduit.

LAP LENGTHS

- #4 - 1'-8"
- #5 - 2'-2"



DECK CROSS SECTION  
(Looking upstation)

DECK PLAN AND CROSS SECTION  
WOLF RD. OVER PALATINE RD.  
F.A.P. RTE. 305 SECT. 2004-108 BR  
COOK COUNTY  
STATION 950+00.00  
STRUCTURE NO. 016-0680

DESIGNED	BPS
CHECKED	KFA
DRAWN	BPS
CHECKED	GSP



CONSULTING ENGINEERS & PLANNERS CHICAGO, ILLINOIS	DESIGNED - BPS	REVISED -
	CHECKED - BHS	REVISED -
	DRAWN - BPS	REVISED -
	CHECKED - BHS	REVISED -

STATE OF ILLINOIS  
DEPARTMENT OF TRANSPORTATION

EXISTING BRIDGE PLANS (3 OF 4)  
S.N. 016-0680

1 - REVISED 07-26-06, BPS

F.A.U. RTE.	SECTION	COUNTY	TOTAL SHEETS	SHEET NO.
2692	1415B-1	COOK	72	63
CONTRACT NO. 60M52			ILLINOIS FED. AID PROJECT	

FILE NAME = g:\project\2102135\_0791\cadd\structure\h\h\150660-60M52-020-Existing\_3.dgn