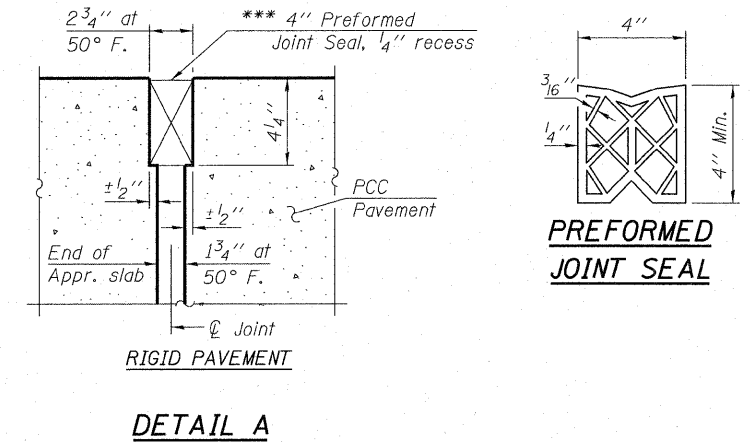


Notes:  
See sheet S13 of S34 for Sections C-C & D-D.  
a<sub>10</sub>(E), a<sub>11</sub>(E) and a<sub>12</sub>(E) bar spacings measured along  $\varnothing$  Rdwy.

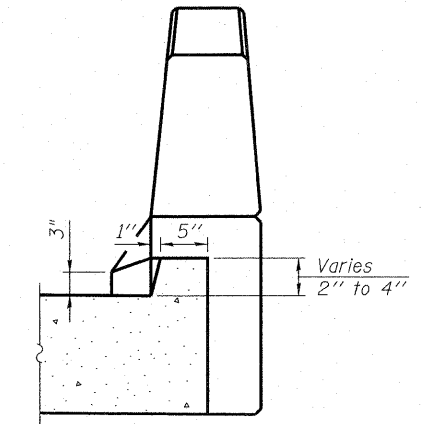
\*\*\* Cost included with Concrete Superstructure.



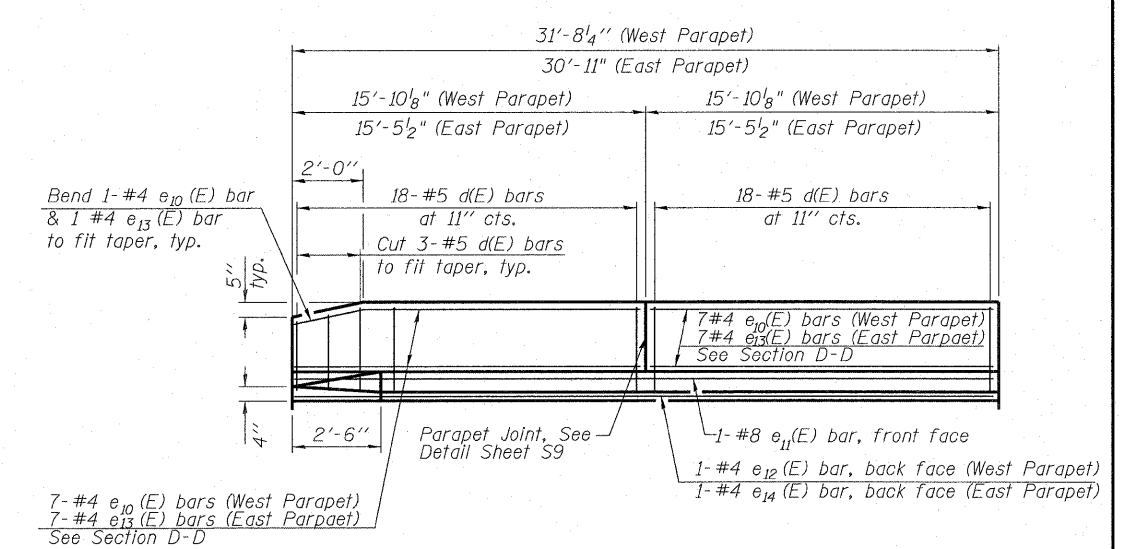
DETAIL A

**MINIMUM BAR LAPS**

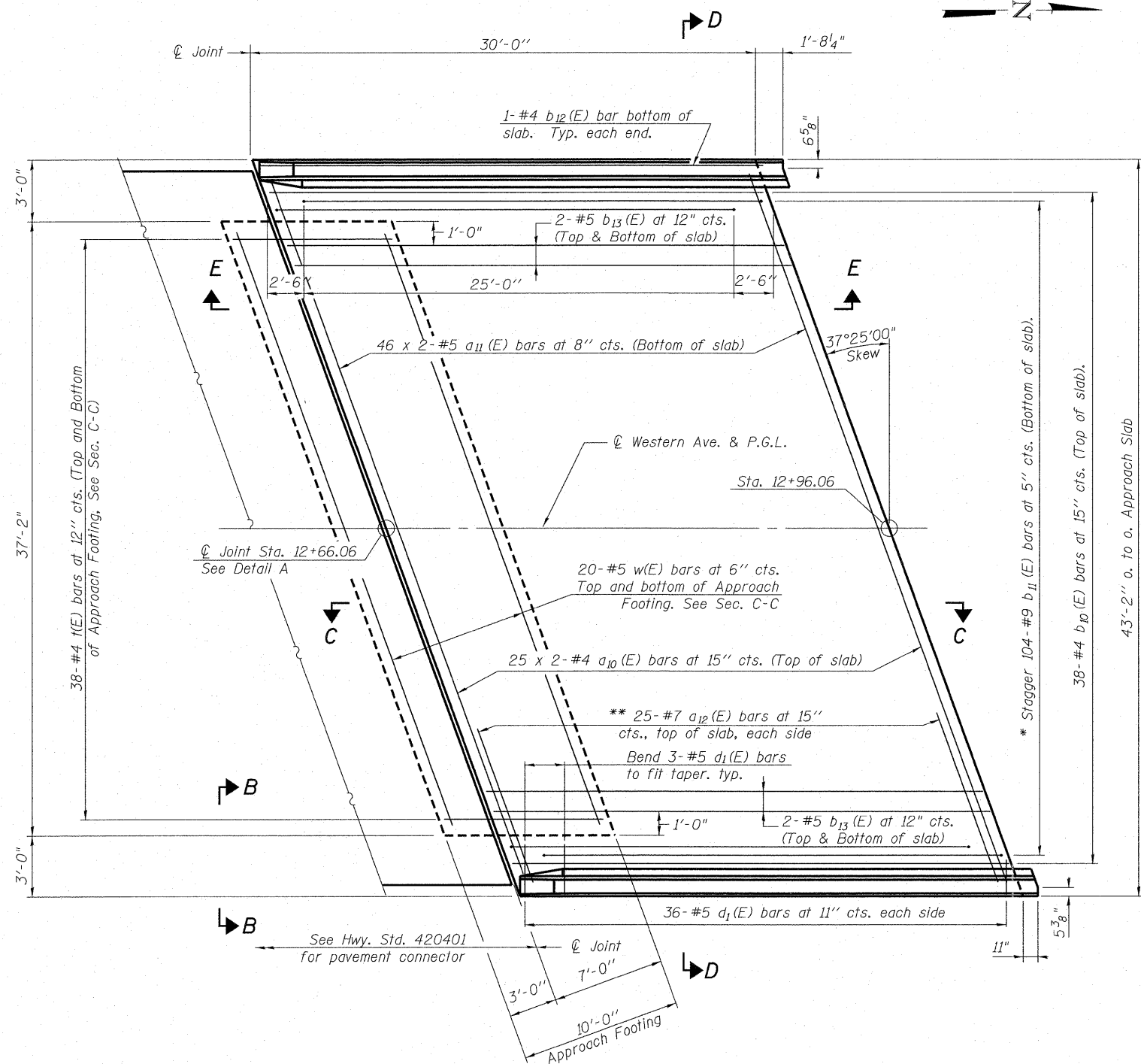
(Approach Slab)  
#4 Bar = 2'-4"  
#5 Bar = 2'-7"  
Bars indicated thus 1 x 2 #4 etc. indicates 1 line of bars with 2 lengths per line.



VIEW B-B



VIEW E-E



SOUTH APPROACH SLAB - PLAN

\* Tilt #9 b<sub>11</sub>(E) bars as required to maintain clearance.  
\*\* Space between a<sub>10</sub>(E) bars, typ. each parapet.

**APEX**  
CONSULTING ENGINEERS, LLC  
111 E. Wacker Drive, Suite 520  
Chicago, IL 60601  
Phone (312) 977-0660 Fax (312) 977-0661

USER NAME =	DESIGNED - HAA	REVISED
	CHECKED - RAD	REVISED
PLOT SCALE =	DRAWN - HAA	REVISED
PLOT DATE = 11/7/2011	CHECKED - RAD	REVISED

STATE OF ILLINOIS  
DEPARTMENT OF TRANSPORTATION

BRIDGE SOUTH APPROACH SLAB DETAIL  
STRUCTURE NO. 016-0772

SHEET NO. S11 OF S34 SHEETS

F.A.U. RTE. 2845	SECTION 0505-B	COUNTY COOK	TOTAL SHEETS 52	SHEET NO. 21
				CONTRACT NO. 60M78
ILLINOIS FED. AID PROJECT				