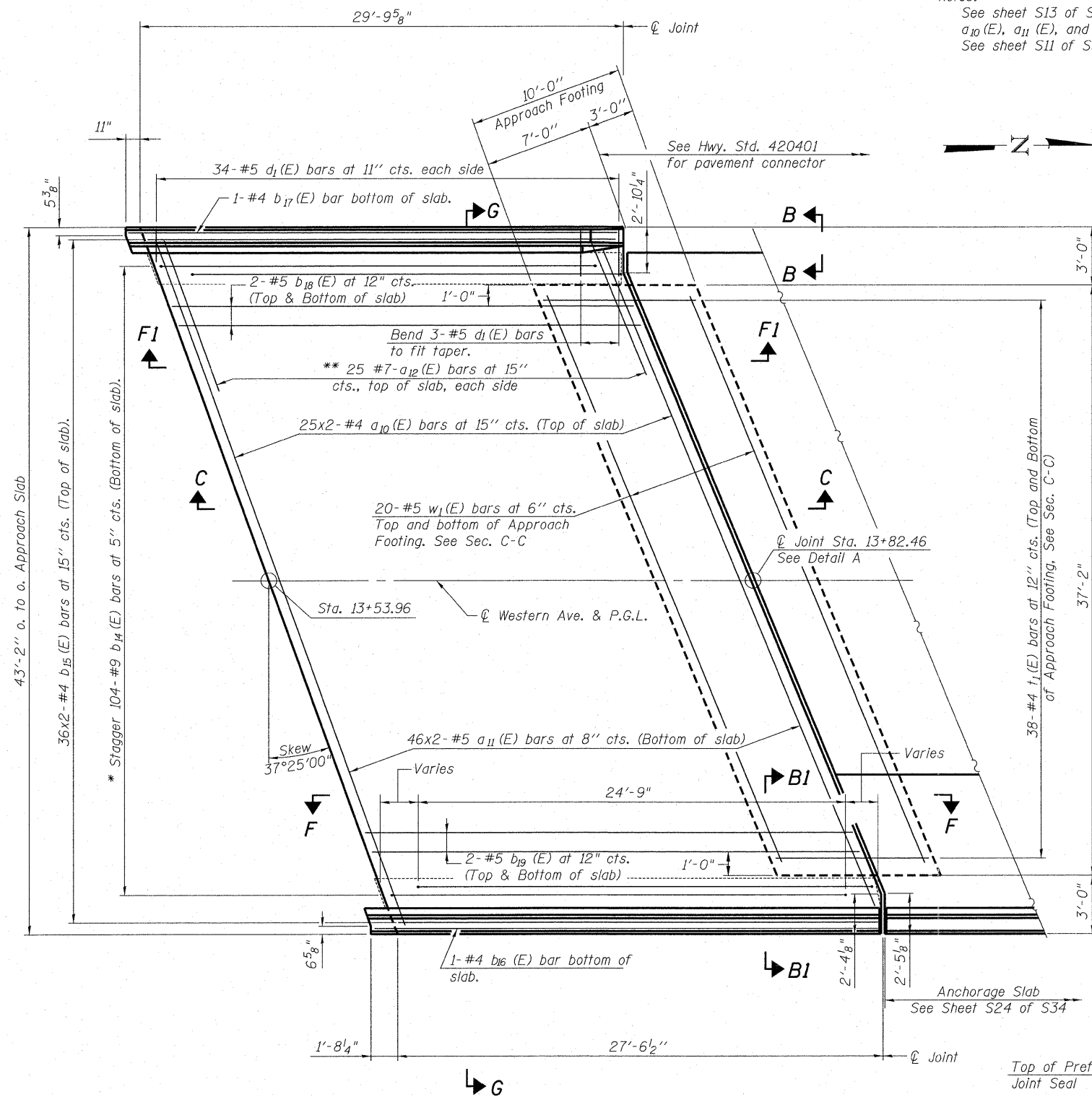


Notes:
 See sheet S13 of S34 for Sections C-C & G-G.
 $a_{10}(E)$, $a_{11}(E)$, and $a_{12}(E)$ bar spacings measured along \varnothing Rdwy.
 See sheet S11 of S34 for View B-B.



MINIMUM BAR LAPS

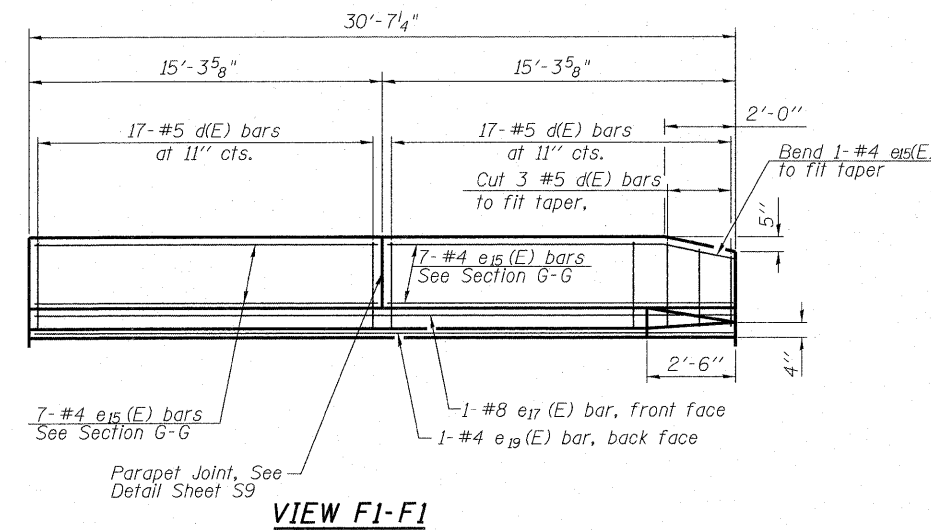
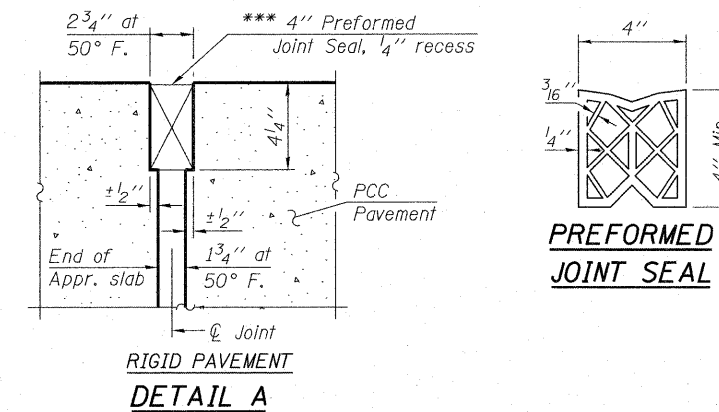
(Approach Slab)
 #4 Bar = 2'-4"
 #5 Bar = 2'-7"

Bars indicated thus 1 x 2 #4 etc. indicates 1 line of bars with 2 lengths per line.

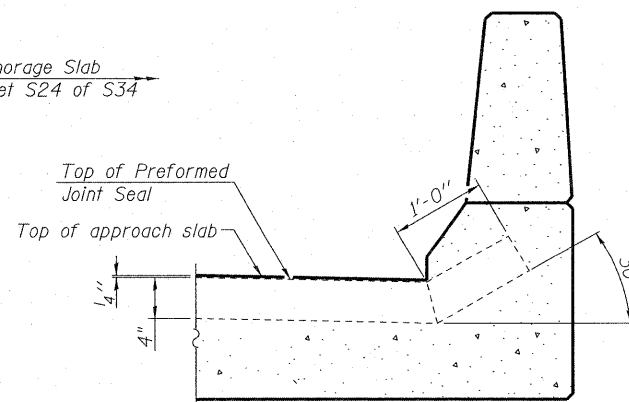
NORTH APPROACH SLAB - PLAN

* Tilt #9 $b_{14}(E)$ bars as required to maintain clearance.
 ** Space between $a_{10}(E)$ bars, typ. each parapet.

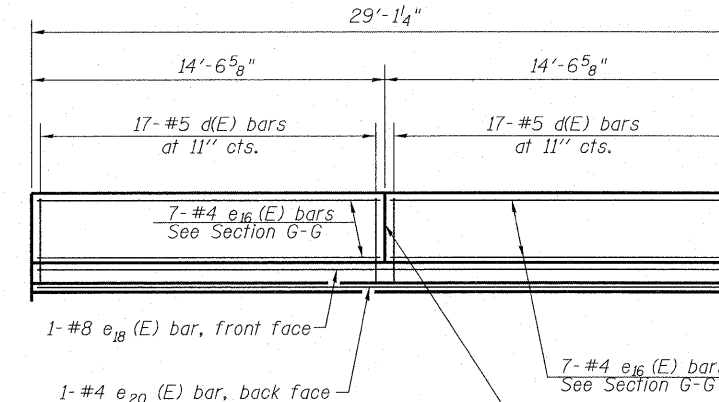
*** Cost included with Concrete Superstructure.



VIEW F1-F1



SECTION B1-B1



VIEW F-F

APEX
 CONSULTING ENGINEERS, LLC
 111 E. Wacker Drive, Suite 520
 Chicago, IL 60601
 Phone (312) 977-0660 Fax (312) 977-0661

USER NAME =	DESIGNED - HAA	REVISED
PLOT SCALE =	CHECKED - RAD	REVISED
PLOT DATE = 11/7/2011	DRAWN - WHI	REVISED
	CHECKED - RAD	REVISED

STATE OF ILLINOIS
DEPARTMENT OF TRANSPORTATION

BRIDGE NORTH APPROACH SLAB DETAILS
STRUCTURE NO. 016-0772

SHEET NO. S12 OF S34 SHEETS

F.A.U. RTE. 2845	SECTION 0505-B	COUNTY COOK	TOTAL SHEETS 52	SHEET NO. 22
CONTRACT NO. 60M78			ILLINOIS FED. AID PROJECT	