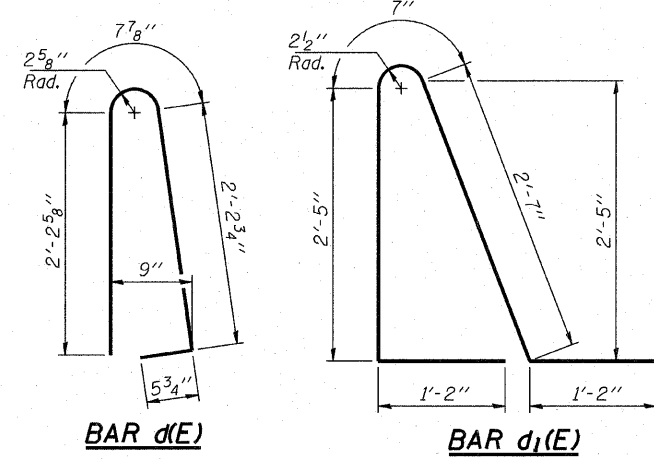


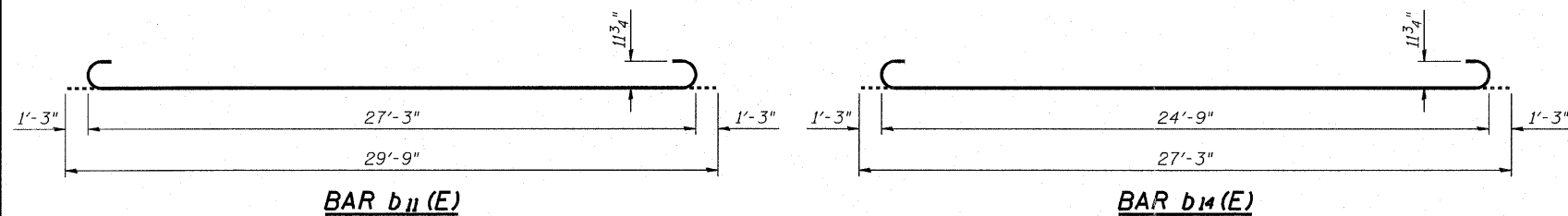
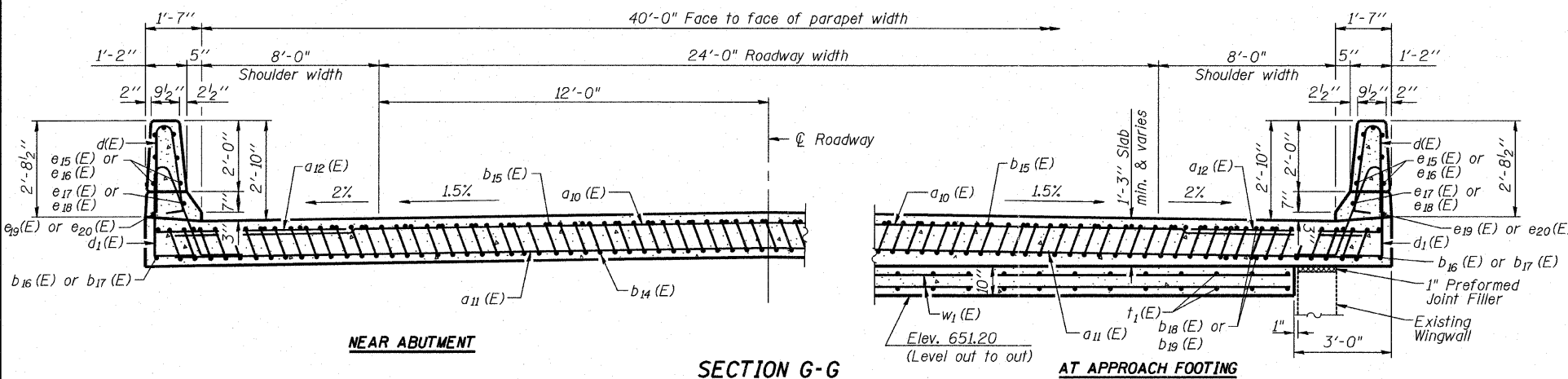
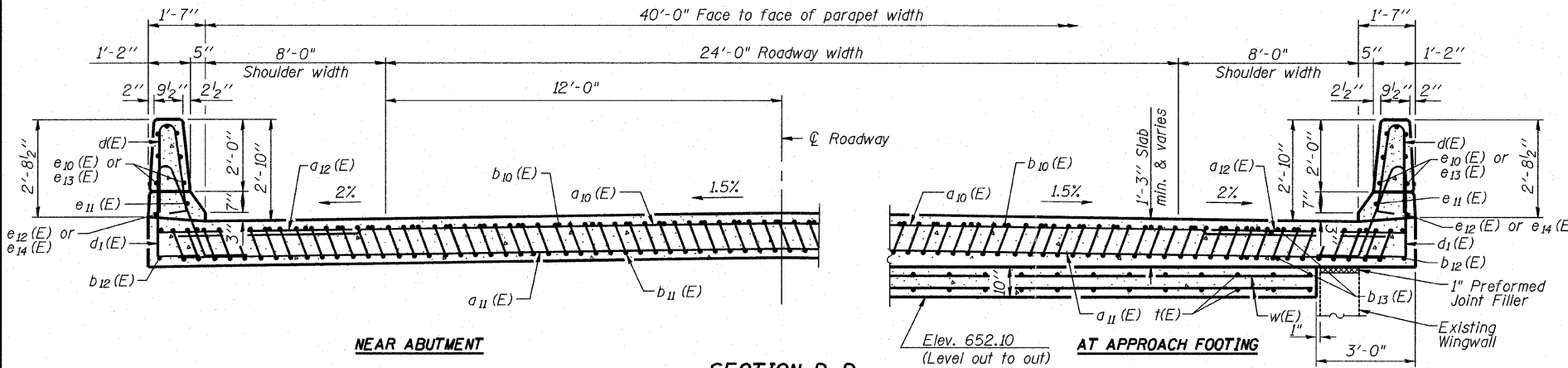
Notes:
See sheet S11 of S34 for Detail A and View B-B.
Approach slab and parapet concrete shall be paid for as Concrete Superstructure.
Approach footing concrete shall be paid for as Concrete Structures.
Reinforcement shall be paid for as Reinforcement Bars, Epoxy Coated.
For $v_{31}(E)$ bar details, see sheets S19 and S21 of S34.
The approach footing maximum applied service bearing pressure (Q_{max}) = 2.0 ksf.
For bar splicer details, see sheet S26 of S34.
Cost of excavation for approach footing included with Concrete Structures.
For Porous Granular Embankment (Special) and drainage treatment details, see sheet S2 of S34.
For additional parapet details, see sheets S9, S11 and S12 of S34.



TWO APPROACHES
BILL OF MATERIAL

Bar	No.	Size	Length	Shape
$a_{10}(E)$	100	# 4	28'-6"	—
$a_{11}(E)$	184	# 5	28'-10"	—
$a_{12}(E)$	100	# 7	7'-5"	—
$b_{10}(E)$	38	# 4	29'-8"	—
$b_{11}(E)$	104	# 9	29'-9"	—
$b_{12}(E)$	2	# 4	29'-9"	—
$b_{13}(E)$	8	# 5	29'-9"	—
$b_{14}(E)$	104	# 9	27'-3"	—
$b_{15}(E)$	72	# 4	16'-6"	—
$b_{16}(E)$	1	# 4	27'-1"	—
$b_{17}(E)$	1	# 4	29'-5"	—
$b_{18}(E)$	4	# 5	27'-6"	—
$b_{19}(E)$	4	# 5	28'-11"	—
$d(E)$	140	# 5	5'-7"	—
$d_1(E)$	140	# 5	7'-11"	—
$e_{10}(E)$	14	# 4	15'-5"	—
$e_{11}(E)$	2	# 8	30'-0"	—
$e_{12}(E)$	1	# 4	31'-3"	—
$e_{13}(E)$	14	# 4	15'-1"	—
$e_{14}(E)$	1	# 4	30'-6"	—
$e_{15}(E)$	14	# 4	15'-0"	—
$e_{16}(E)$	14	# 4	14'-2"	—
$e_{17}(E)$	1	# 8	29'-10"	—
$e_{18}(E)$	1	# 8	29'-4"	—
$e_{19}(E)$	1	# 4	30'-8"	—
$e_{20}(E)$	1	# 4	28'-2"	—
$t(E)$	76	# 4	12'-3"	—
$t_1(E)$	75	# 4	12'-6"	—
$w(E)$	40	# 5	46'-10"	—
$w_1(E)$	40	# 5	47'-6"	—
Concrete Superstructure		Cu. Yd.	152.5	
Concrete Structures		Cu. Yd.	31.0	
Reinforcement Bars, Epoxy Coated		Pound	42,090	

* Tilt #9 $b_{11}(E)$ or $b_{14}(E)$ bars as required to maintain clearance.
*** Cost included with Concrete Superstructure.



APEX CONSULTING ENGINEERS, LLC
111 E. Wacker Drive, Suite 830
Chicago, IL 60601
Phone: (312) 977-0500 Fax: (312) 977-0661

USER NAME =	DESIGNED - HAA	REVISED
PLOT SCALE =	CHECKED - RAD	REVISED
PLOT DATE = 12/08/2011	DRAWN - WHI	REVISED
	CHECKED - RAD	REVISED

STATE OF ILLINOIS
DEPARTMENT OF TRANSPORTATION

BRIDGE APPROACH SLAB DETAILS
STRUCTURE NO. 016-0772
SHEET NO. S13 OF S34 SHEETS

F.A.U. RTE. 2845	SECTION 0505-B	COUNTY COOK	TOTAL SHEETS 52	SHEET NO. 23
ILLINOIS FED. AID PROJECT			CONTRACT NO. 60M78	