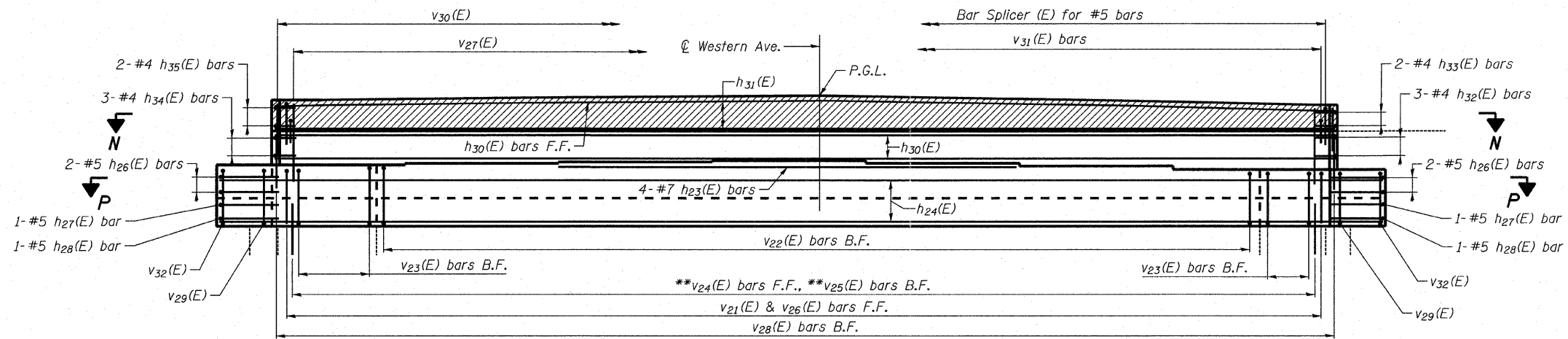
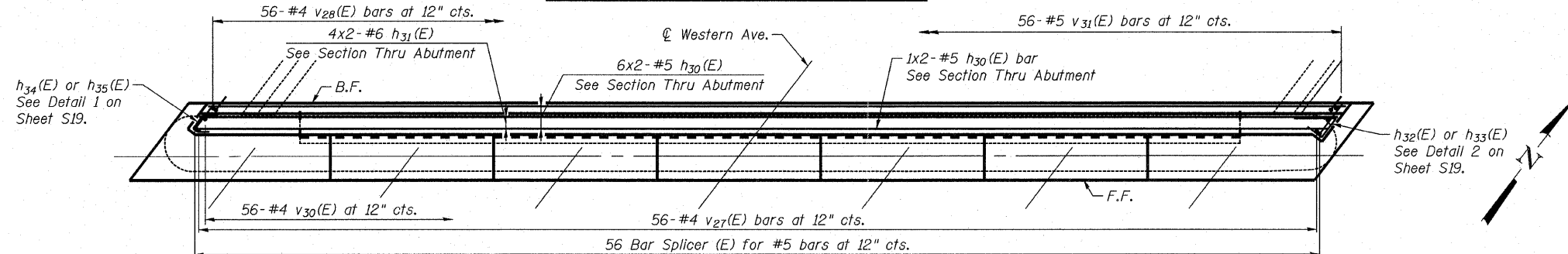


**NORTH ABUTMENT BILL OF MATERIAL**

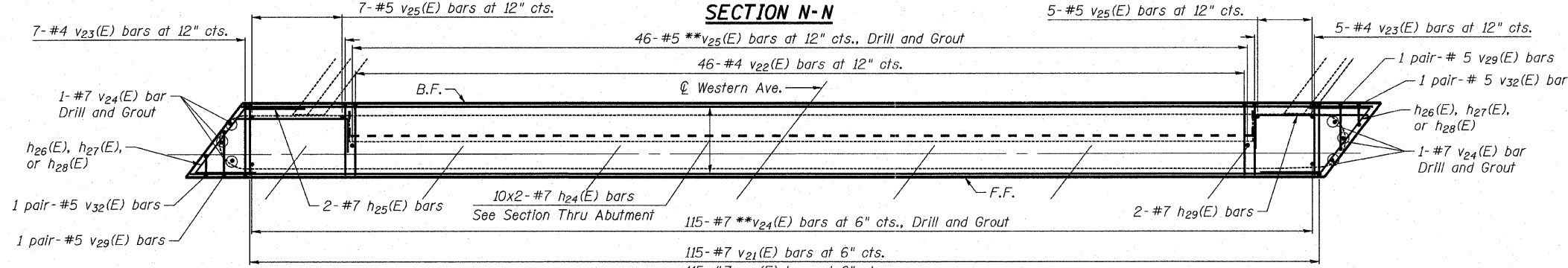
Bar	No.	Size	Length	Shape
h23(E)	4	# 7	23'-0"	—
h24(E)	20	# 7	31'-1"	—
h25(E)	2	# 7	7'-0"	┌
h26(E)	4	# 5	10'-3"	└
h27(E)	2	# 5	9'-10"	└
h28(E)	2	# 5	8'-4"	└
h29(E)	2	# 7	8'-0"	┌
h30(E)	14	# 5	28'-10"	—
h31(E)	8	# 6	29'-3"	—
h32(E)	3	# 4	4'-11"	└
h33(E)	2	# 4	4'-0"	└
h34(E)	3	# 4	5'-0"	└
h35(E)	2	# 4	4'-2"	└
v21(E)	115	# 7	6'-11"	┌
v22(E)	46	# 4	4'-10"	└
v23(E)	12	# 4	5'-3"	└
v24(E)	121	# 7	5'-6"	—
v25(E)	58	# 5	3'-6"	—
v26(E)	115	# 7	4'-4"	└
v27(E)	56	# 4	4'-9"	—
v28(E)	56	# 4	3'-0"	—
v29(E)	4	# 5	6'-11"	└
v30(E)	56	# 4	3'-0"	└
v31(E)	56	# 5	3'-9"	└
v32(E)	4	# 5	4'-7"	└
Reinforcement Bars, Epoxy Coated	Pound	8,010		
Concrete Structures	Cu. Yds.	28.4		
Concrete Sealer	Sq. Ft.	595		
Structure Excavation	Cu. Yds.	44		
Epoxy Crack Injection	Foot	5		
Structure Repair of Concrete (Depth Equal to or Less Than 5 Inches)	Sq. Ft.	23		



**NORTH ABUTMENT CAP - ELEVATION**



**SECTION N-N**



**SECTION P-P**

\*\* Epoxy Grout v24(E) and v25(E) bars in 9" min. drilled holes according to Art. 584 of the Standard Specifications.

- Notes:
- Any reinforcement bars that are damaged during concrete removal operations shall be repaired or replaced using approved bar splicer or anchorage system. Cost included with "Concrete Removal".
  - Hatched area to be poured after superstructure false work has been removed. Quantity of concrete included with "Concrete Superstructures".
  - For Section Thru Abutment and Section at Abutment End, see Sheet S19 of S34.
  - For Expansion Joint details, see Sheet S10 of S34.

