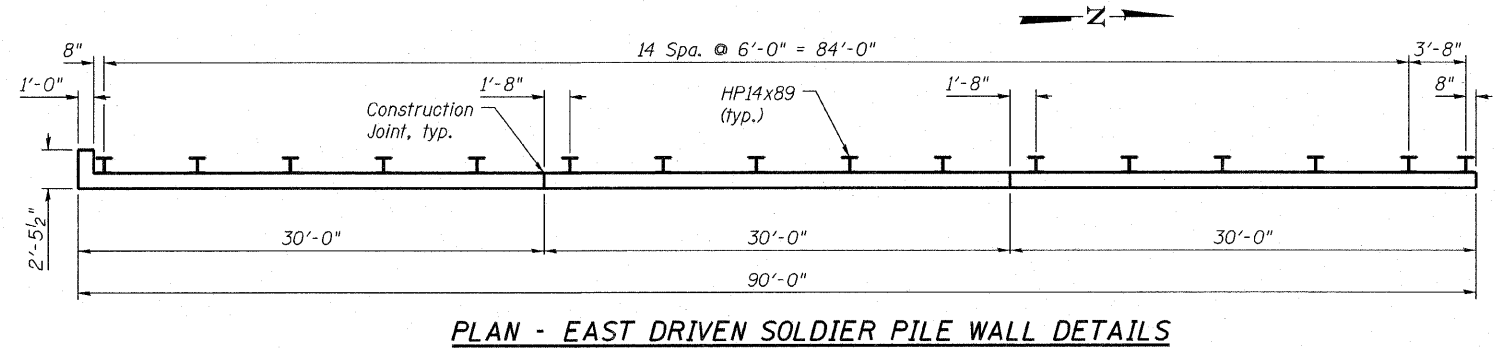
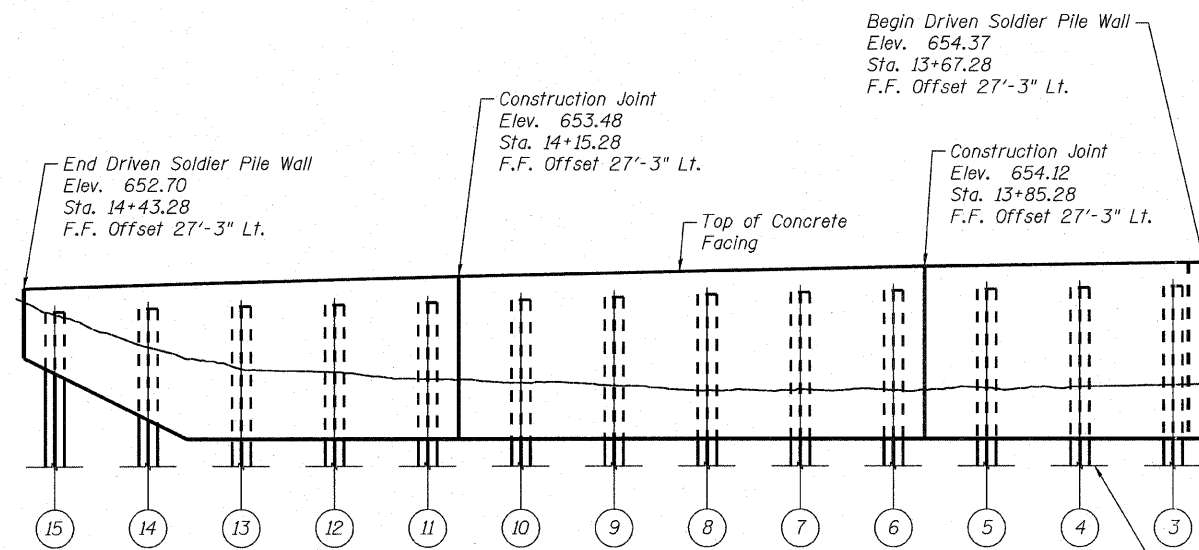


PLAN - WEST DRIVEN SOLDIER PILE WALL DETAILS

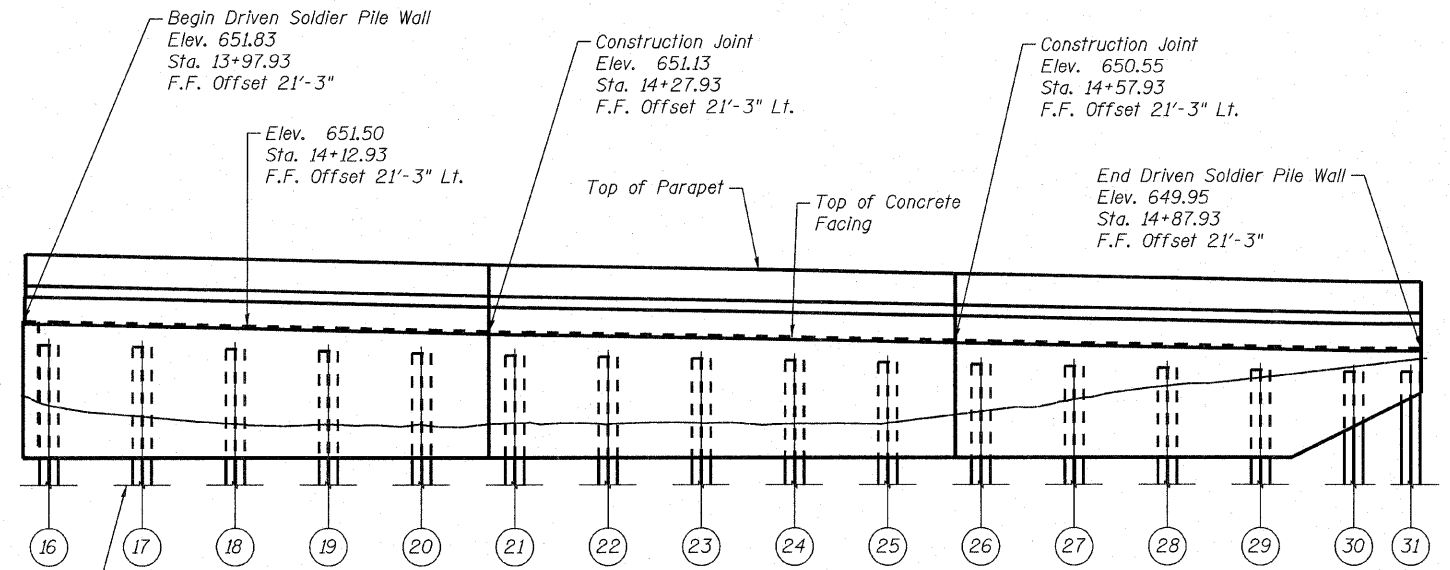


PLAN - EAST DRIVEN SOLDIER PILE WALL DETAILS



ELEVATION - WEST DRIVEN SOLDIER PILE WALL DETAILS

(Looking East)



ELEVATION - EAST DRIVEN SOLDIER PILE WALL DETAILS

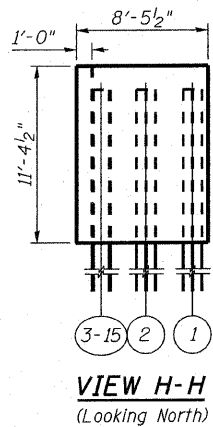
(Looking West)

Top of Pile Elevations
West Driven Soldier Pile Wall

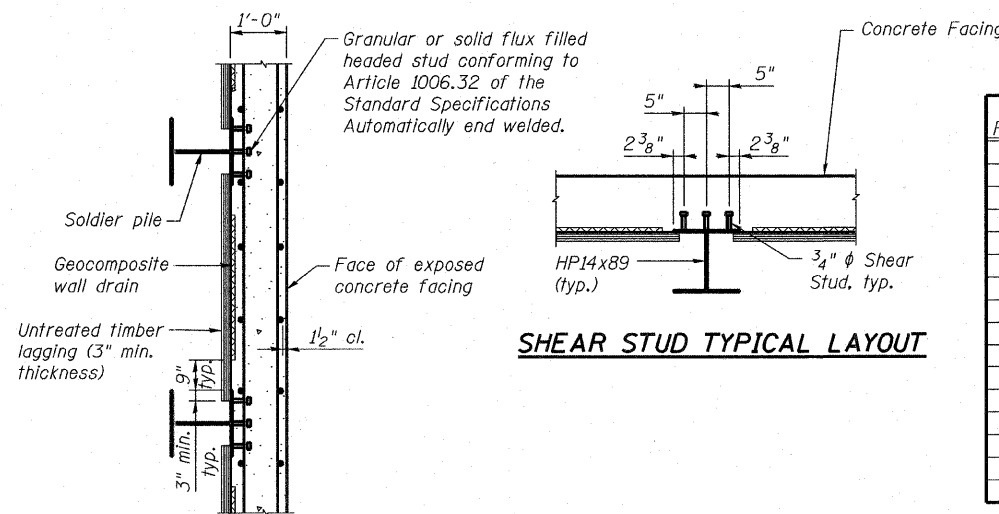
Pile No.	Length	Top Elev.	No. Studs Per Pile	Stud Spacing
1	31'-0"	652.70	3 x 19 = 57	18 Spa. @ 6" = 9'-0"
2	31'-0"	652.70	3 x 19 = 57	18 Spa. @ 6" = 9'-0"
3	31'-0"	652.67	3 x 19 = 57	18 Spa. @ 6" = 9'-0"
4	31'-0"	652.58	3 x 19 = 57	18 Spa. @ 6" = 9'-0"
5	31'-0"	652.49	3 x 19 = 57	18 Spa. @ 5.75" = 8'-7 1/2"
6	31'-0"	652.39	3 x 19 = 57	18 Spa. @ 5.75" = 8'-7 1/2"
7	31'-0"	652.28	3 x 18 = 54	17 Spa. @ 6" = 8'-6"
8	31'-0"	652.13	3 x 18 = 54	17 Spa. @ 6" = 8'-6"
9	31'-0"	651.97	3 x 18 = 54	17 Spa. @ 5.75" = 8'-1 3/4"
10	31'-0"	651.80	3 x 17 = 51	16 Spa. @ 6" = 8'-0"
11	31'-0"	651.64	3 x 17 = 51	16 Spa. @ 6" = 8'-0"
12	31'-0"	651.47	3 x 17 = 51	16 Spa. @ 5.75" = 7'-8"
13	31'-0"	651.36	3 x 17 = 51	16 Spa. @ 5.75" = 7'-8"
14	31'-0"	651.24	3 x 14 = 42	13 Spa. @ 5.75" = 6'-2 3/4"
15	31'-0"	651.02	3 x 8 = 24	7 Spa. @ 5.25" = 3'-3 3/4"

Top of Pile Elevations
East Driven Soldier Pile Wall

Pile No.	Length	Top Elev.	No. Stud Per Pile	Stud Spacing
16	28'-3"	650.28	3 x 15 = 45	14 Spa. @ 5.75" = 6'-8 1/2"
17	28'-3"	650.15	3 x 14 = 42	13 Spa. @ 6" = 6'-6"
18	28'-3"	650.01	3 x 14 = 42	13 Spa. @ 6" = 6'-6"
19	28'-3"	649.87	3 x 14 = 42	13 Spa. @ 5.75" = 6'-2 3/4"
20	28'-3"	649.73	3 x 13 = 39	12 Spa. @ 6" = 6'-0"
21	28'-3"	649.59	3 x 13 = 39	12 Spa. @ 6" = 6'-0"
22	28'-3"	649.48	3 x 13 = 39	12 Spa. @ 5.75" = 5'-9"
23	28'-3"	649.37	3 x 13 = 39	12 Spa. @ 5.75" = 5'-9"
24	28'-3"	649.25	3 x 13 = 39	12 Spa. @ 5.5" = 5'-6"
25	28'-3"	649.12	3 x 12 = 36	11 Spa. @ 6" = 5'-6"
26	28'-3"	649.00	3 x 12 = 36	11 Spa. @ 5.75" = 5'-3 1/4"
27	28'-3"	648.87	3 x 12 = 36	11 Spa. @ 5.75" = 5'-3 1/4"
28	28'-3"	648.75	3 x 12 = 36	11 Spa. @ 5.5" = 5'-1 1/2"
29	28'-3"	648.63	3 x 11 = 33	10 Spa. @ 6" = 5'-0"
30	28'-3"	648.52	3 x 7 = 21	6 Spa. @ 5.25" = 2'-8 1/2"
31	28'-3"	648.45	3 x 3 = 9	2 Spa. @ 5.25" = 10 1/2"



VIEW H-H
(Looking North)



SECTION THRU DRILLED
SOLDIER PILE WALL

SHEAR STUD TYPICAL LAYOUT