

F.A.U. RTE.	SECTION	COUNTY	TOTAL SHEETS	SHEET NO.
0378	29Y-RS-3	WILL	18	1
		ILLINOIS	CONTRACT NO. 60N69	

STATE OF ILLINOIS
DEPARTMENT OF TRANSPORTATION
DIVISION OF HIGHWAYS

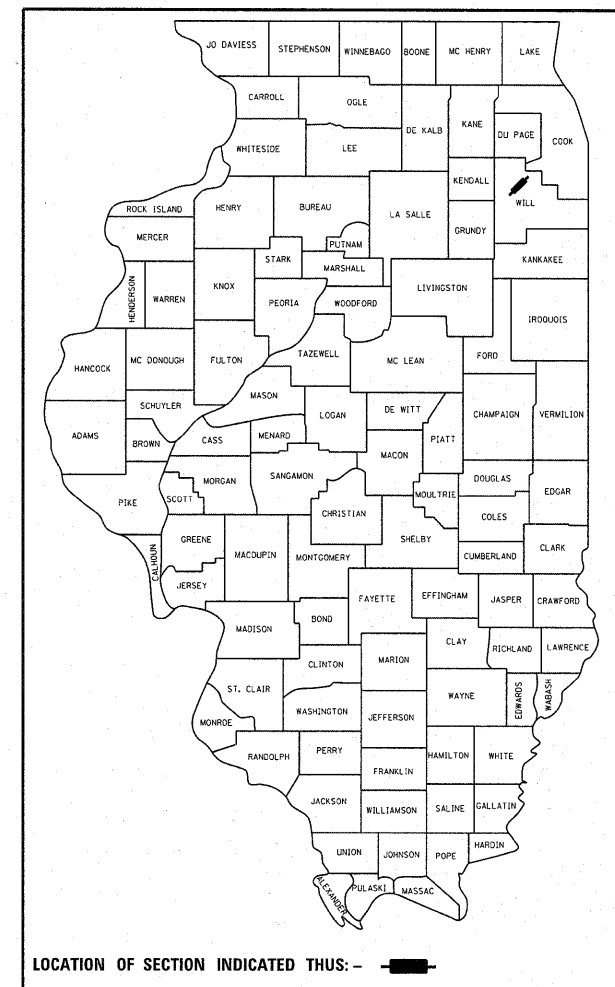
**PROPOSED
HIGHWAY PLANS**

FAU ROUTE 0378: JOLIET ROAD
0.3 MI. NE OF BLUFF ROAD TO IL 53
SECTION 29Y-RS-3

(3P) RESURFACING
WILL COUNTY

C-91-339-11

D-91-339-11



FOR INDEX OF SHEETS, SEE SHEET NO. 2

PROJECT IS LOCATED IN THE VILLAGE OF ROMEOVILLE

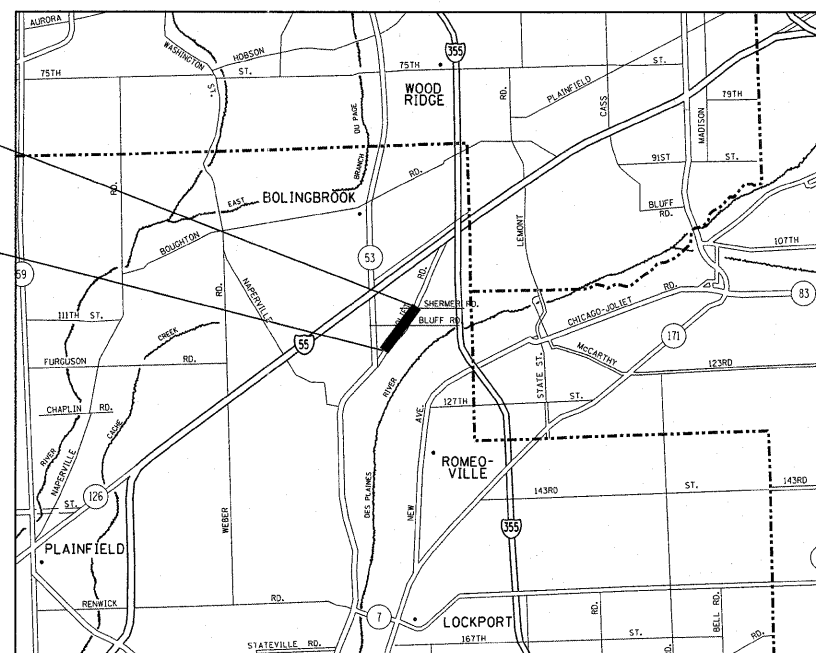
TRAFFIC DATA

ADT 2008 = 27,000
POSTED SPEED LIMIT = 45 MPH



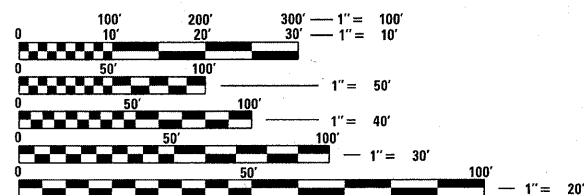
PROJECT ENDS
STA. 70 + 50

PROJECT BEGINS
STA. 25 + 00



LOCKPORT TOWNSHIP

GROSS LENGTH = 4,550 FT. = 0.86 MILE
NET LENGTH = 4,550 FT. = 0.86 MILE



FULL SIZE PLANS HAVE BEEN PREPARED USING STANDARD ENGINEERING SCALES. REDUCED SIZED PLANS WILL NOT CONFORM TO STANDARD SCALES. IN MAKING MEASUREMENTS ON REDUCED PLANS, THE ABOVE SCALES MAY BE USED.

J.U.L.I.E.
JOINT UTILITY LOCATION INFORMATION FOR EXCAVATION
1-800-892-0123
OR 811

PROJECT ENGINEER: ROBERT BORO (847) 705-4237
PROJECT MANAGER: ISSAM RAYYAN (847) 705-4178

CONTRACT NO. 60N69

STATE OF ILLINOIS
DEPARTMENT OF TRANSPORTATION
DIVISION OF HIGHWAYS

SUBMITTED October 21, 2011

Diane M. O'Keefe DEPUTY DIRECTOR OF HIGHWAYS, REGION ENGINEER

December 9, 2011

Scott E. Stitt, P.E. acting ENGINEER OF DESIGN AND ENVIRONMENT

December 9, 2011

William R. Fiebler Interim DIRECTOR OF HIGHWAYS, CHIEF ENGINEER

**PRINTED BY THE AUTHORITY
OF THE STATE OF ILLINOIS**