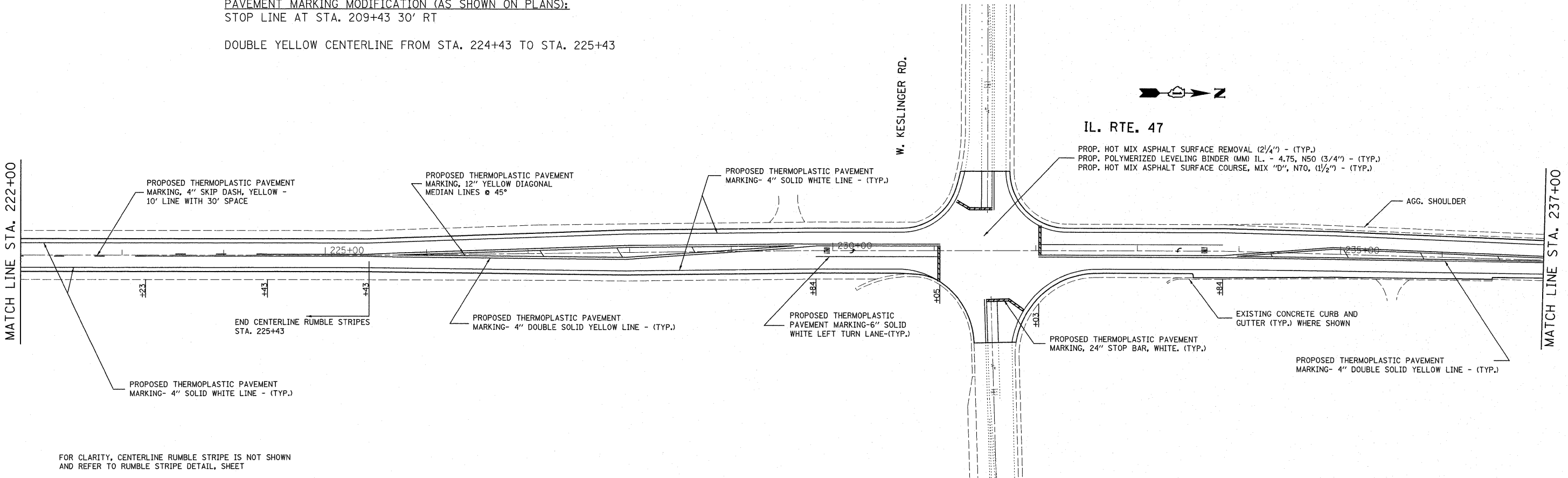


PAVEMENT MARKING MODIFICATION (AS SHOWN ON PLANS):
 STOP LINE AT STA. 209+43 30' RT
 DOUBLE YELLOW CENTERLINE FROM STA. 224+43 TO STA. 225+43



FOR CLARITY, CENTERLINE RUMBLE STRIPE IS NOT SHOWN
 AND REFER TO RUMBLE STRIPE DETAIL, SHEET

FILE NAME =	USER NAME = harringtoncc	DESIGNED -	REVISED -	STATE OF ILLINOIS DEPARTMENT OF TRANSPORTATION	(ILL 47) SEAVEY RD. TO 0.1 MILES N of WELTER RD.				F.A.P. RTE. 326	SECTION 107-RS-4	COUNTY KANE	TOTAL SHEETS 35	SHEET NO. 12
es:\pwwork\pwwork\harringtoncc\d0270368	D146311-sht-plan.dgn	DRAWN -	REVISED -		SCALE:	SHEET NO.	OF	SHEETS	STA.	TO STA.	CONTRACT NO. 60P09		
	PLOT SCALE = 50,0000 ' / in.	CHECKED -	REVISED -								ILLINOIS FED. AID PROJECT		
	PLOT DATE = 11/1/2011	DATE -	REVISED -										