

STATE OF ILLINOIS  
DEPARTMENT OF TRANSPORTATION  
DIVISION OF HIGHWAYS

**PROPOSED  
HIGHWAY PLANS**

FAP RTE 856: US 6 (CHANNAHON RD)  
0.1 MI N OF TERRY DR TO 0.2 MILES OF EMPRESS RD  
SECTION: EX-RS-4  
RESURFACING (3P)  
PROJECT: F-0856(026)  
WILL COUNTY

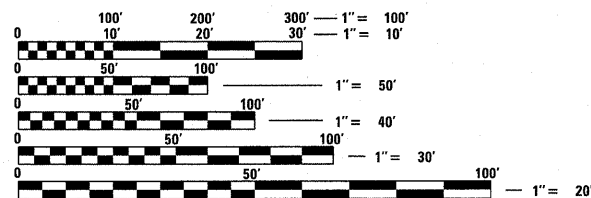
F.A.P. RTE.	SECTION	COUNTY	TOTAL SHEETS	SHEET NO.
856	EX-RS-4	WILL	20	1
		ILLINOIS	CONTRACT NO. 60P48	

FOR INDEX OF SHEETS, SEE SHEET NO. 2

PROJECT IS LOCATED IN THE CITY OF JOLIET.

TRAFFIC DATA

2009 ADT = 14,300  
POSTED SPEED LIMIT = 50 MPH



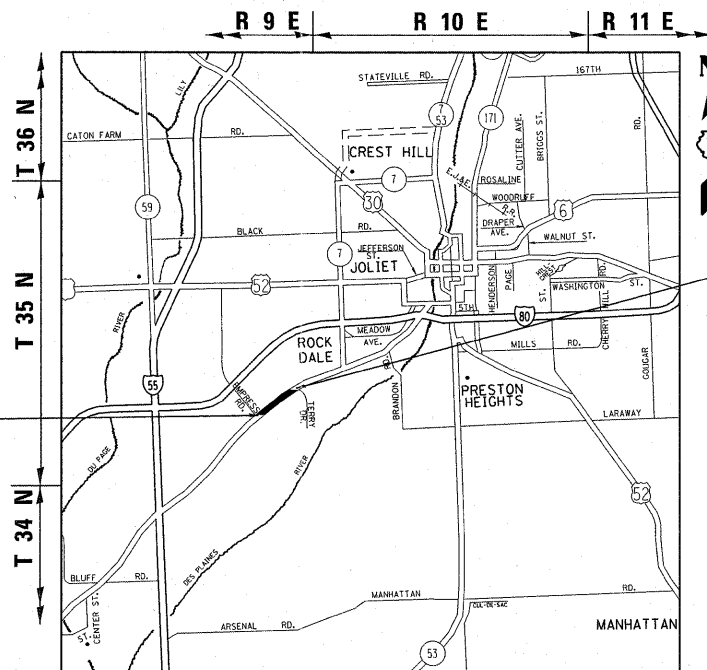
FULL SIZE PLANS HAVE BEEN PREPARED USING STANDARD ENGINEERING SCALES. REDUCED SIZED PLANS WILL NOT CONFORM TO STANDARD SCALES. IN MAKING MEASUREMENTS ON REDUCED PLANS, THE ABOVE SCALES MAY BE USED.

J.U.L.I.E.  
JOINT UTILITY LOCATION INFORMATION FOR EXCAVATION  
1-800-892-0123  
OR 811

PROJECT ENGINEER: BOB BORO (847) 705-4237  
PROJECT MANAGER: ISSAM RAYYAN

CONTRACT NO. 60P48

C-91-558-11

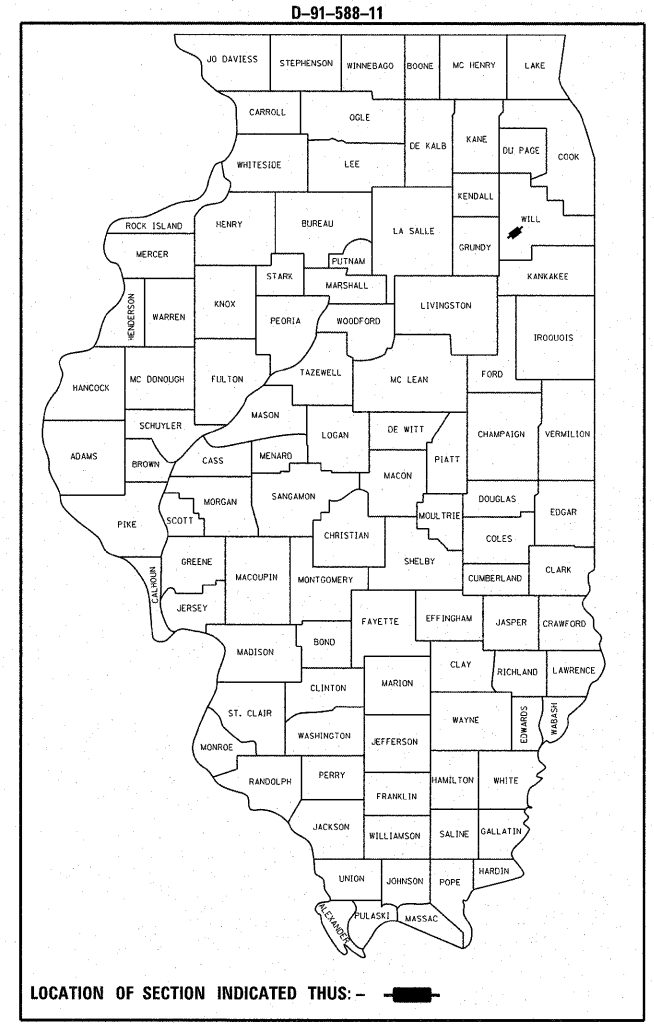


PROJECT BEGINS  
STATION 22 + 7.90

PROJECT ENDS  
STATION 73 + 4.50

TROY TOWNSHIP

GROSS LENGTH = 5,096.6 FT. = 0.965 MILE  
NET LENGTH = 5,096.6 FT. = 0.965 MILE



LOCATION OF SECTION INDICATED THUS: - [black rectangle] -

STATE OF ILLINOIS  
DEPARTMENT OF TRANSPORTATION  
DIVISION OF HIGHWAYS

SUBMITTED OCTOBER 20 20 11

*Diana M. O'Keefe*  
DEPUTY DIRECTOR OF HIGHWAYS, REGION ENGINEER

December 9 20 11  
*Scott E. Stitt P.E.*  
Acting ENGINEER OF DESIGN AND ENVIRONMENT

December 9 20 11  
*William R. Frey*  
Interim DIRECTOR OF HIGHWAYS, CHIEF ENGINEER

PRINTED BY THE AUTHORITY  
OF THE STATE OF ILLINOIS