

F.A.P. RTE.	SECTION	COUNTY	TOTAL SHEETS	SHEET NO.
870	534-RS-5	DUPAGE	19	1
		ILLINOIS	CONTRACT NO. 60P91	

STATE OF ILLINOIS
DEPARTMENT OF TRANSPORTATION
DIVISION OF HIGHWAYS

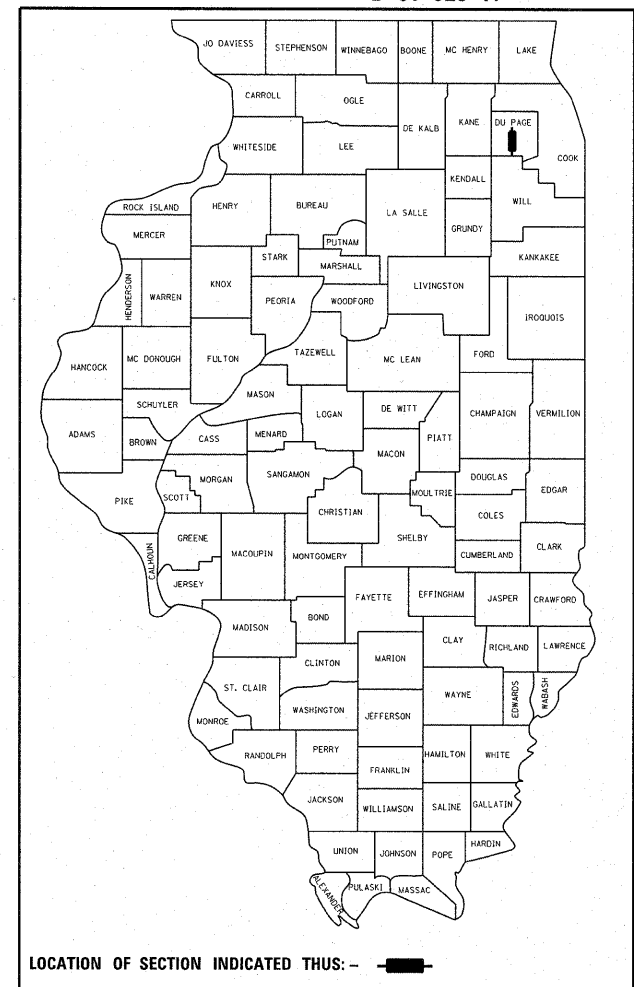
**PROPOSED
HIGHWAY PLANS**

FAP ROUTE 870: ILL 53
75TH STREET TO WILL COUNTY LINE
SECTION 534-RS-5
RESURFACING (3P)
PROJECT: F-0870(013)
DUPAGE COUNTY
C-91-629-11

FOR INDEX OF SHEETS, SEE SHEET NO. 2

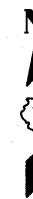
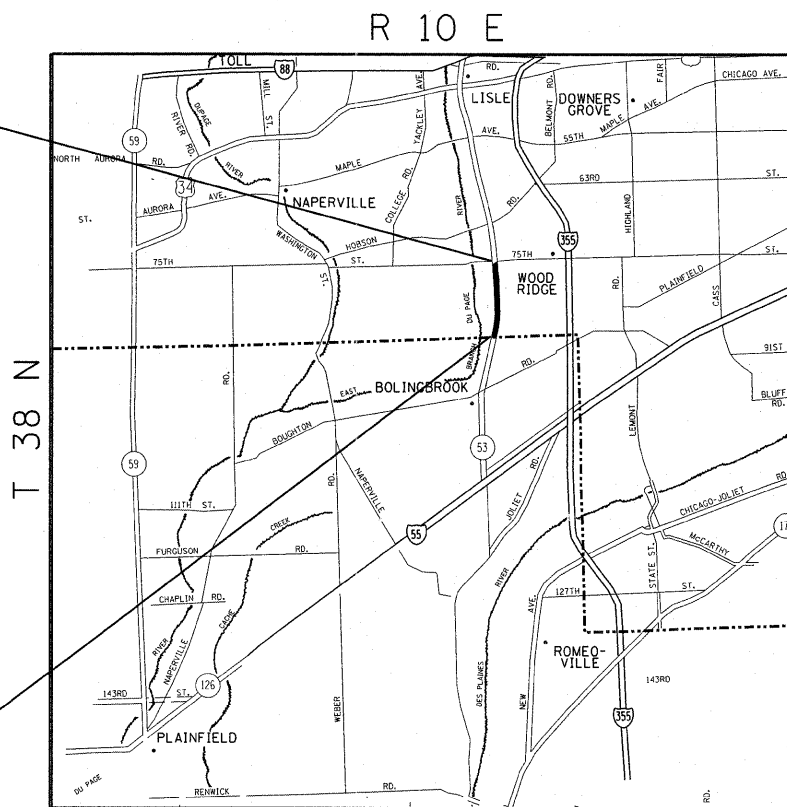
PROJECT IS LOCATED IN THE VILLAGE OF
WOODRIDGE.

D-91-629-11



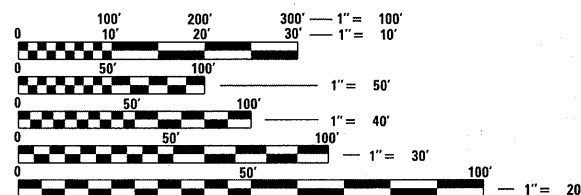
PROJECT ENDS:
STATION 79 + 86

PROJECT BEGINS:
STATION 3 + 77



TRAFFIC DATA

2009 ADT = 25,400
POSTED SPEED LIMIT = 45 MPH



FULL SIZE PLANS HAVE BEEN PREPARED USING STANDARD ENGINEERING SCALES. REDUCED SIZED PLANS WILL NOT CONFORM TO STANDARD SCALES. IN MAKING MEASUREMENTS ON REDUCED PLANS, THE ABOVE SCALES MAY BE USED.

J.U.L.I.E.
JOINT UTILITY LOCATION INFORMATION FOR EXCAVATION
1-800-892-0123
OR 811

PROJECT ENGINEER DAN WILGREEN (847) 705-4240
PROJECT MANAGER KEN ENG (847) 705-4247

CONTRACT NO. 60P91

LISLE TOWNSHIP

GROSS AND NET LENGTH OF PROJECT = 7,609 FT. = 1.44 MILES

STATE OF ILLINOIS
DEPARTMENT OF TRANSPORTATION
DIVISION OF HIGHWAYS

SUBMITTED OCTOBER 21 20 11

Diana M. O'Keefe
DEPUTY DIRECTOR OF HIGHWAYS, REGION ENGINEER

December 9 20 11
Scott E. Still P.E.
acting ENGINEER OF DESIGN AND ENVIRONMENT

December 9 20 11
William R. Frey
Interim DIRECTOR OF HIGHWAYS, CHIEF ENGINEER

**PRINTED BY THE AUTHORITY
OF THE STATE OF ILLINOIS**