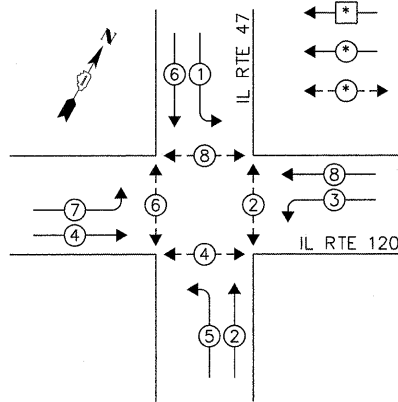


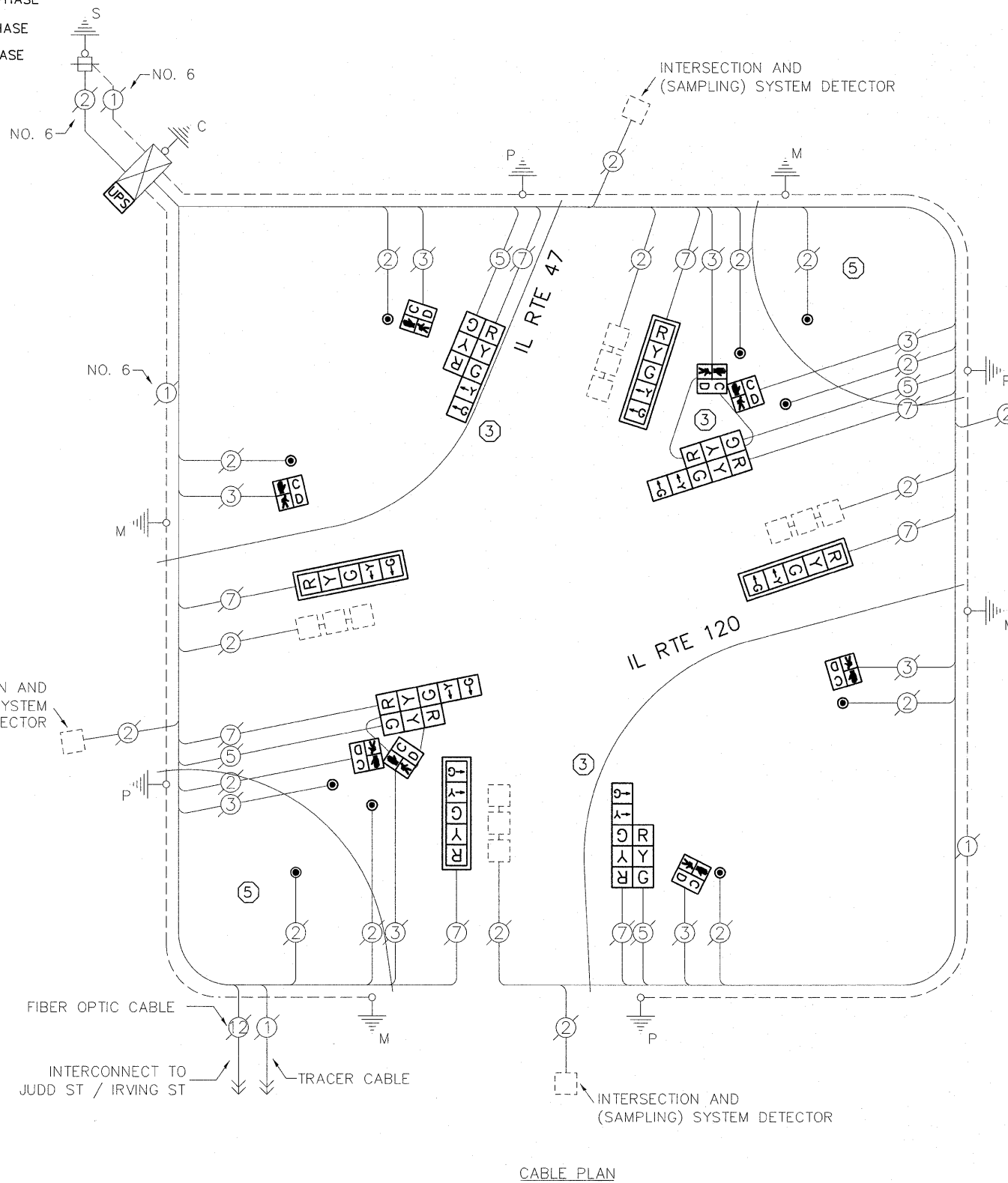
CONTROLLER SEQUENCE

LEGEND:

- ◻ SINGLE ENTRY PHASE
- ◉ DUAL ENTRY PHASE
- ◉ PEDESTRIAN PHASE



PHASE DESIGNATION DIAGRAM



CABLE PLAN

- ① REPLACE 14FT PAINTED POST. RE-USE EXISTING TYPE A CONCRETE FOUNDATION.
- ② REPLACE 15FT PAINTED POST. RE-USE EXISTING TYPE A CONCRETE FOUNDATION.
- ③ REPLACE 16FT PAINTED POST. RE-USE EXISTING TYPE A CONCRETE FOUNDATION.
- ④ REPLACE 18FT PAINTED POST. RE-USE EXISTING TYPE A CONCRETE FOUNDATION.
- ⑤ REPLACE 3.5FT PAINTED POST. RE-USE EXISTING TYPE A CONCRETE FOUNDATION.

THE FOLLOWING ITEMS SHALL BE REMOVED BY THE CONTRACTOR AND SHALL BE DISPOSED OF BY THEM OUTSIDE THE RIGHT-OF-WAY AT THEIR EXPENSE. THE SALVAGE VALUE OF THE REMOVED EQUIPMENT SHALL BE REFLECTED IN THE CONTRACT BID PRICE.

- 4 EACH SIGNAL HEAD, 3-SECTION
- 8 EACH SIGNAL HEAD, 5-SECTION
- 4 EACH TRAFFIC SIGNAL BACKPLATE
- 8 EACH PEDESTRIAN SIGNAL HEAD
- 10 EACH PEDESTRIAN PUSH-BUTTON
- 5 EACH STEEL POST

SCHEDULE OF QUANTITIES

ITEM	UNIT	QUANTITY
MAINTENANCE OF EXISTING TRAFFIC SIGNAL INSTALLATION	EACH	1
TRAFFIC SIGNAL POST, GALVANIZED STEEL, 3.5 FT	EACH	2
TRAFFIC SIGNAL POST, GALVANIZED STEEL, 16 FT	EACH	3
SIGNAL HEAD, LED, 1-FACE, 5-SECTION, MAST-ARM MOUNTED	EACH	4
SIGNAL HEAD, LED, 2-FACE, 1-3 SECTION, 1-5 SECTION, BRACKET MOUNTED	EACH	4
PEDESTRIAN SIGNAL HEAD, LED, 1-FACE, BM WITH COUNTDOWN TIMER	EACH	4
PEDESTRIAN SIGNAL HEAD, LED, 2-FACE, BM WITH COUNTDOWN TIMER	EACH	2
TRAFFIC SIGNAL BACKPLATE, LOUVERED, ALUMINUM	EACH	4
PEDESTRIAN PUSH-BUTTON	EACH	10
MODIFY EXISTING CONTROLLER CABINET	EACH	1
REMOVE EXISTING TRAFFIC SIGNAL EQUIPMENT	EACH	1
UNINTERRUPTIBLE POWER SUPPLY SPECIAL	EACH	1

I.D.O.T. TRAFFIC SIGNAL INSTALLATION ELECTRICAL SERVICE REQUIREMENTS					TOTAL WATTAGE
TYPE	NO. OF LAMPS	WATTAGE		% OPERATION	
SIGNAL (RED)	12	INCAND.	17	0.50	102.00
(YELLOW)	12	LED	25	0.25	75.00
(GREEN)	12	LED	15	0.25	45.00
ARROW	16	LED	12	0.10	19.20
PED. SIGNAL	8	LED	25	1.00	200.00
CONTROLLER	1	LED	100	1.00	100.00
ILLUM. SIGN	-	LED	25	0.05	-
VIDEO SYSTEM	-	LED	-	1.00	-
FLASHER	-	LED	-	0.50	-
ENERGY COSTS TO:				TOTAL =	541.20

CITY OF WOODSTOCK
 121 WEST CALHOUN ST
 WOODSTOCK, IL 60098
 ENERGY SUPPLY: CONTACT: MIKE LENOX
 PHONE: (815) 490-2869
 COMPANY: COMMONWEALTH EDISON

FILE NAME =	USER NAME = placenciai	DESIGNED - IP	REVISED -
#FILEABBREV#		DRAWN - IP	REVISED -
	PLOT SCALE = 20,000' / 1" =	CHECKED - AW	REVISED -
	PLOT DATE = 10/27/2011	DATE - 10/25/2011	REVISED -

STATE OF ILLINOIS
 DEPARTMENT OF TRANSPORTATION

SCHEDULE OF QUANTITIES, CABLE PLAN, PHASE DESIGNATION DIAGRAM AND EMERGENCY VEHICLE PREEMPTION SEQUENCE
 IL RTE 47 AND IL RTE 120

SCALE: 1" = SHEET NO. OF SHEETS STA. TO STA.

F.A.U. RTE.	SECTION	COUNTY	TOTAL SHEETS	SHEET NO.
-	2011-208-TS	MCHENRY	57	31
CONTRACT NO. 60R37				ILLINOIS