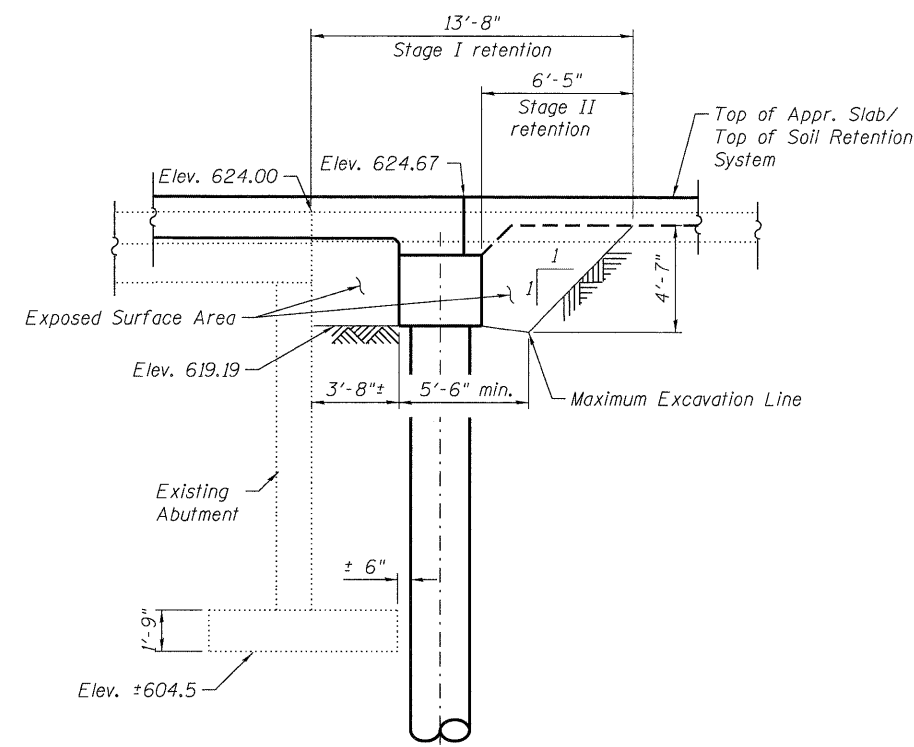
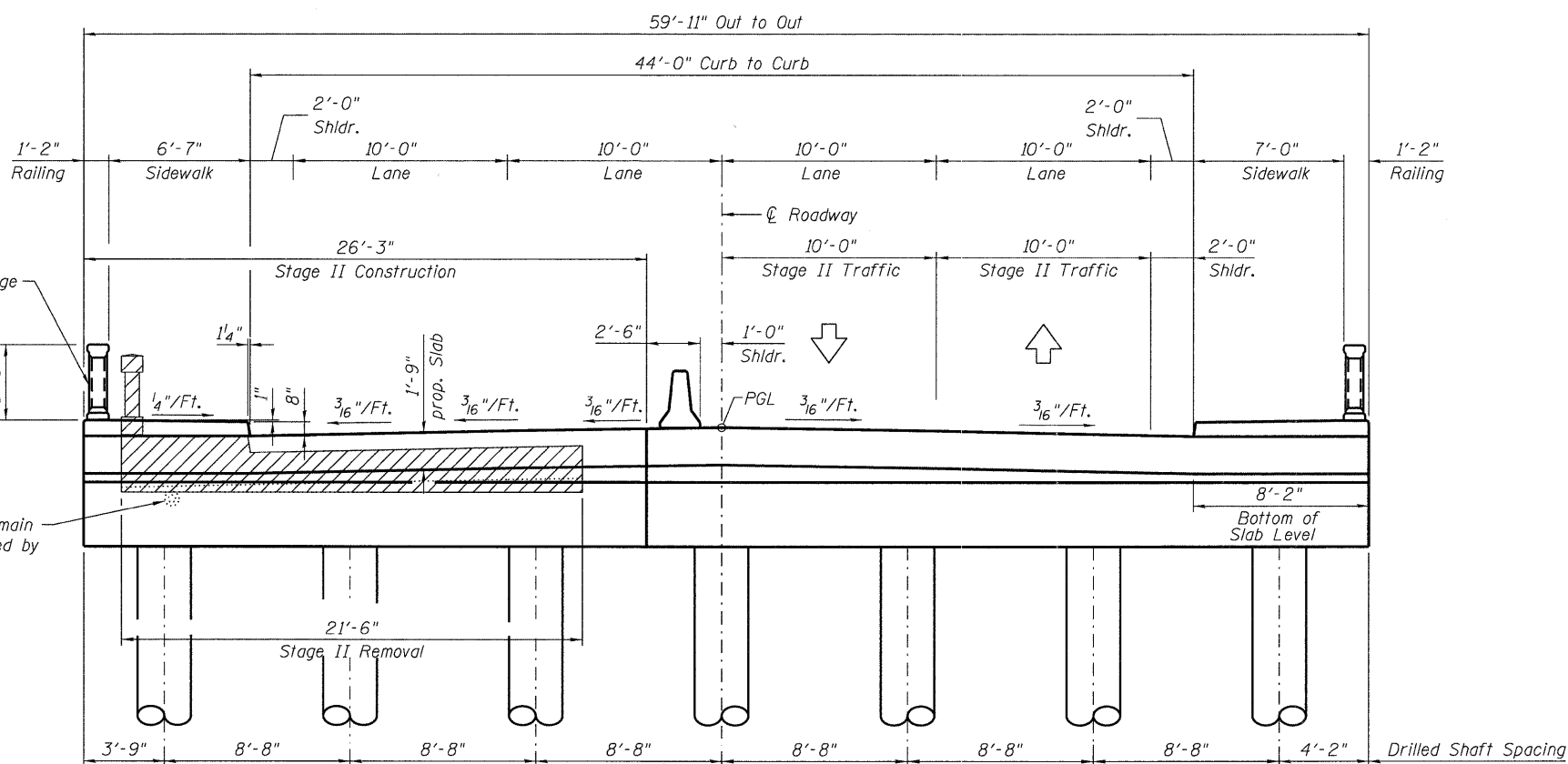


STAGE I CONSTRUCTION
(Looking North)



TEMPORARY SOIL RETENTION SYSTEM



STAGE II CONSTRUCTION
(Looking North)

NOTES

1. A cantilevered sheet piling design does not appear feasible and additional members or other retention systems may be necessary. The Contractor shall submit a temporary soil retention system design including plan details and calculations for review and acceptance by the Engineer.
2. The existing bridge sidewalk and rail removal is included with the cost of the Removal of Existing Concrete Deck.
3. Per the existing plans, the sidewalk has voids in place for telephone to cross the bridge. Care should be taken when removing the structure not to damage the utilities.

BILL OF MATERIAL

ITEM	UNIT	TOTAL
Temporary Soil Retention System	Sq. Ft.	152

LEGEND

Concrete Deck Removal

N:\PROJECTS\0003377_00\0003377_06\Design\Structure\CAD\016-281B_03_Stage_Constr.dgn



USER NAME = rdonley
 PLOT SCALE = 4/0" = 1' = 1/4"
 PLOT DATE = 10/25/2011

DESIGNED BWS
 CHECKED SCD
 DRAWN RD
 CHECKED DL

REVISED -
 REVISED -
 REVISED -
 REVISED -

STATE OF ILLINOIS
DEPARTMENT OF TRANSPORTATION

STAGE CONSTRUCTION
STRUCTURE NO. 016-281B

SHEET NO. S-3 OF S-17 SHEETS

F.A.U. RTE.	SECTION	COUNTY	TOTAL SHEETS	SHEET NO.
2742	3222-W-BR	COOK	51	28
CONTRACT NO. 62116				
[ILLINOIS] FED. AID PROJECT				