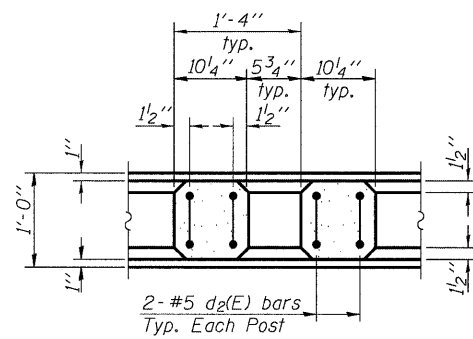
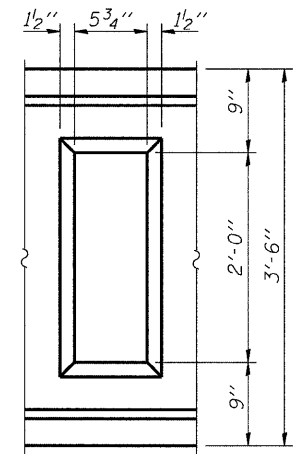


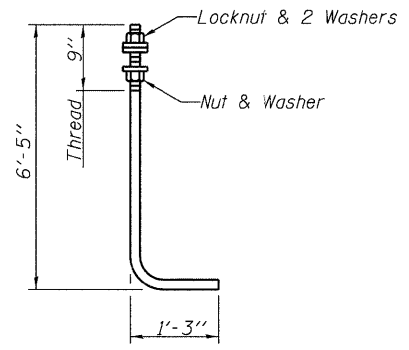
N:\PROJECTS\00003377_000\00003377_006\Design\Structure\CAD\016-2818_10_Superstructure_Details.dgn



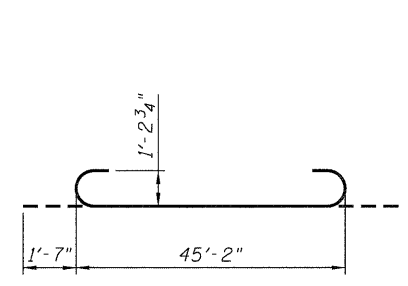
SECTION E-E



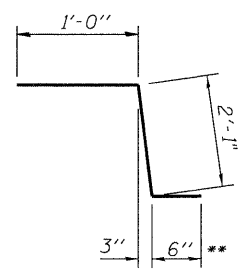
WINDOW DETAIL



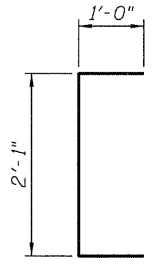
ANCHOR ROD FOR LIGHT POLE
1" Diameter (ASTM F 1554 Grade 105)



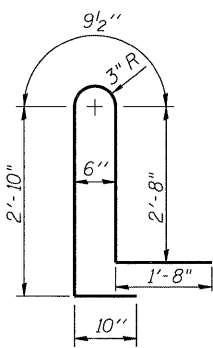
BAR b₁(E)



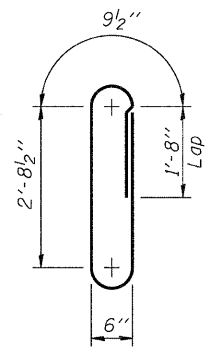
BAR c(E)



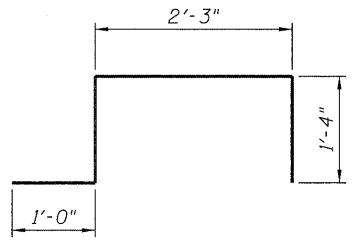
BAR d(E)



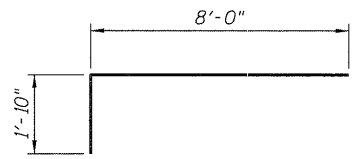
BAR d₁(E)



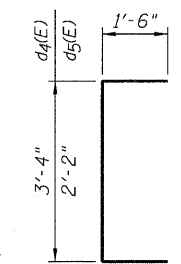
BAR d₂(E)*



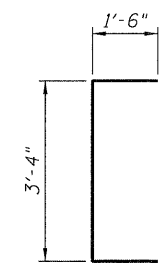
BAR d₃(E)*



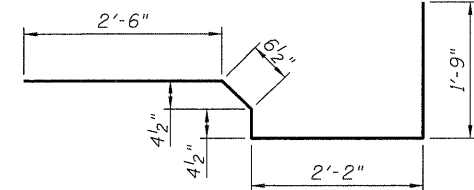
BAR v₃(E)



*** BARS d₄(E) & d₅(E)**



BAR d₆(E)



BAR s(E)

* Bars d₂(E) thru d₅(E) are included in the cost of Concrete Bridge Railing Sidewalk Mounted.
** In lieu of bottom leg, c(E) bars may be cored and set according to Article 509.06 of the Standard Specifications. Cored holes shall be roughened or scored per manufacturer's recommendations. Maximum depth of cored hole shall not exceed 6".

SUPERSTRUCTURE BILL OF MATERIAL

Bar	No.	Size	Length	Shape
a(E)	38	# 5	25'-11"	—
a ₁ (E)	47	# 7	25'-11"	—
a ₂ (E)	38	# 5	33'-4"	—
a ₃ (E)	47	# 7	33'-4"	—
b(E)	126	# 5	24'-1"	—
b ₁ (E)	121	# 11	48'-4"	⌋
c(E)	94	# 5	3'-7"	⌋
c ₁ (E)	47	# 5	7'-10"	—
c ₂ (E)	47	# 5	7'-5"	—
d(E)	94	# 5	4'-1"	⌋
d ₁ (E)	138	# 5	8'-10"	⌋
d ₆ (E)	8	# 6	6'-4"	⌋
s(E)	122	# 5	7'-4"	—
v ₃ (E)	82	# 6	9'-10"	⌋
Reinforcement Bars, Epoxy Coated			Pound	47,270
Concrete Superstructure			Cu. Yds.	202.8
Concrete Bridge Rail, Sidewalk Mounted			Foot	121
Bridge Deck Grooving			Sq. Yds.	213
Protective Coat			Sq. Yds.	377
Bar Splicers			Each	85
Rubbed Finish			Sq. Ft.	917

Bars indicated thus 1 x 15-#5 etc. indicates 1 line of bars with 15 lengths per line.



USER NAME = rdanley	DESIGNED BWS	REVISED -
PLOT SCALE = 0.083333 ' / in.	CHECKED LVH	REVISED -
PLOT DATE = 10/25/2011	DRAWN RD	REVISED -
	CHECKED AMK	REVISED -

STATE OF ILLINOIS
DEPARTMENT OF TRANSPORTATION

SUPERSTRUCTURE DETAILS
STRUCTURE NO. 016-2818
SHEET NO. S-10 OF S-17 SHEETS

F.A.U. RTE.	SECTION	COUNTY	TOTAL SHEETS	SHEET NO.
2742	3222-W-BR	COOK	51	35
CONTRACT NO. 62116				
ILLINOIS FED. AID PROJECT				