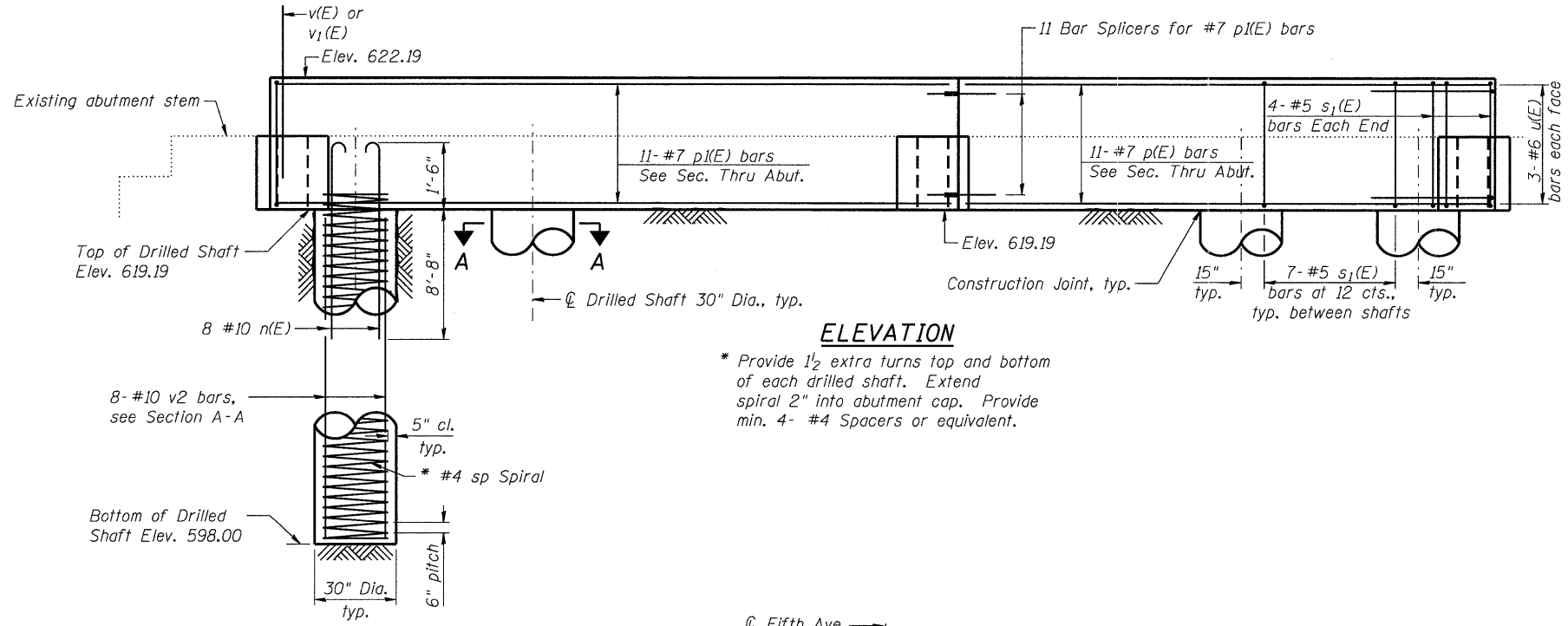
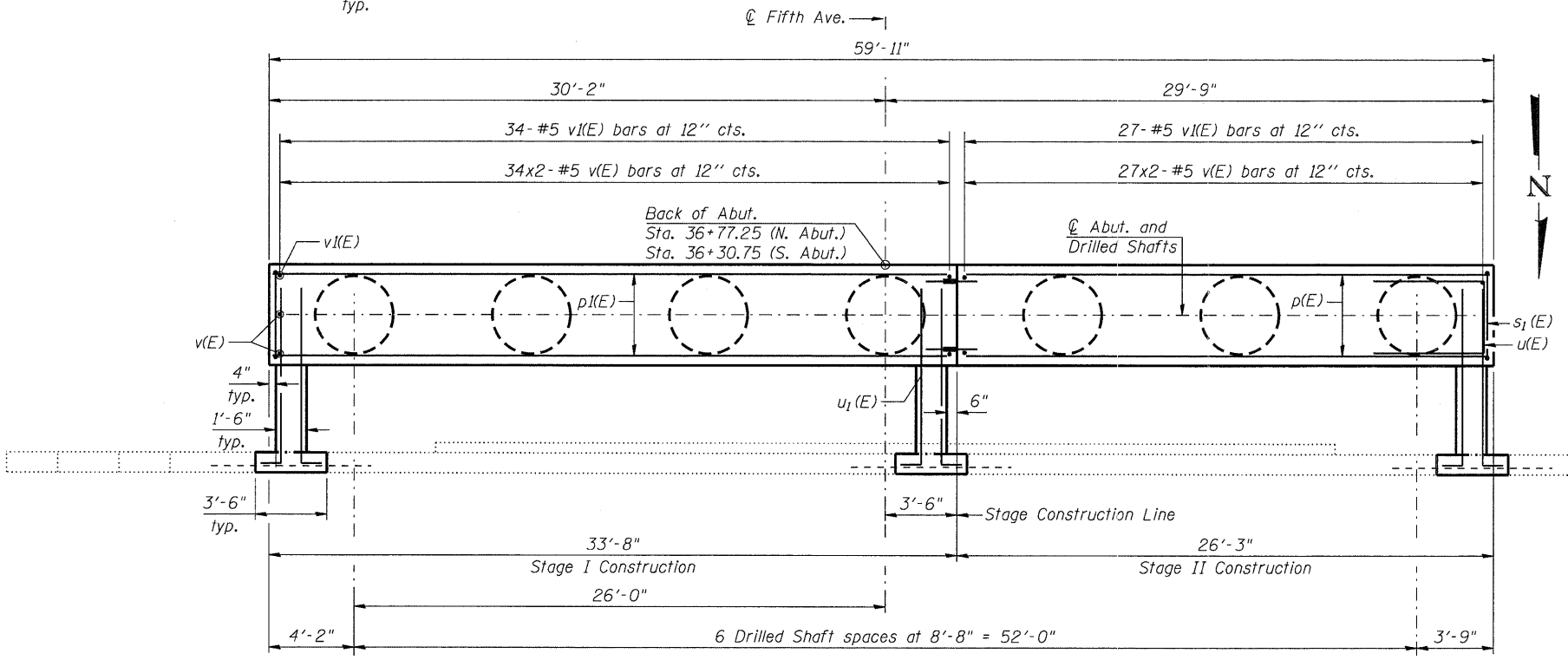


N:\PROJ\0003377\00\0003377\06\Design\Structural\CAD\016-2818\_13\_South Abutment Detail.sxdn



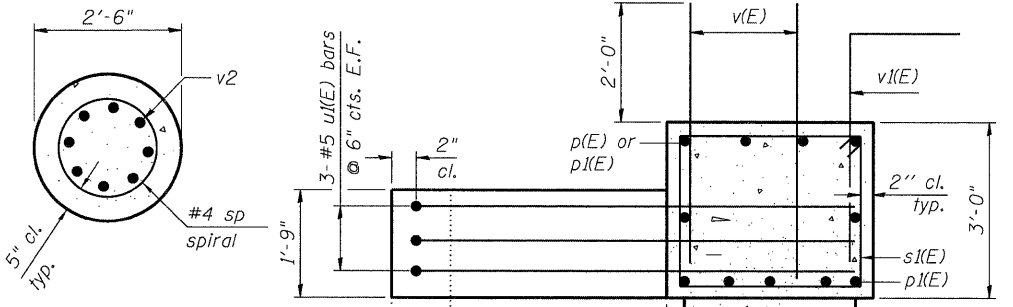
**ELEVATION**

\* Provide 1/2 extra turns top and bottom of each drilled shaft. Extend spiral 2" into abutment cap. Provide min. 4- #4 Spacers or equivalent.

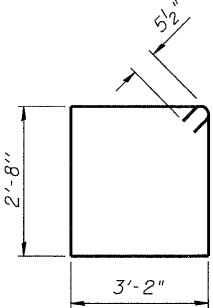


**PLAN**

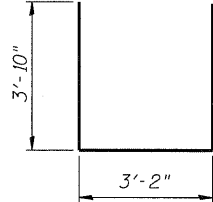
(South Abutment Shown, N. Abutment similar opposite hand)



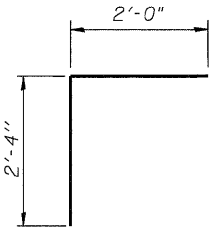
**SECTION A-A**



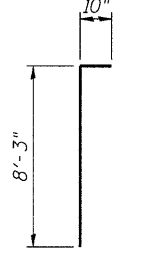
**BAR s1(E)**



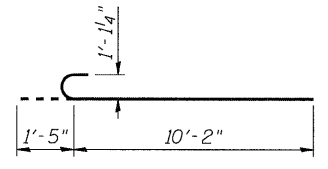
**BAR u(E)**



**BAR v1(E)**



**BAR u1(E)**



**BAR n(E)**

**SEC. THRU ABUT. AT TIE WALLS**

**BILL OF MATERIAL**

Quantities For Two Abutments

Bar	No.	Size	Length	Shape
n(E)	112	# 10	11'-7"	U
p(E)	22	# 7	25'-11"	—
p1(E)	22	# 7	33'-4"	—
s1(E)	100	# 5	12'-7"	□
u(E)	12	# 6	10'-10"	U
u1(E)	36	# 5	9'-1"	U
v(E)	244	# 5	4'-4"	—
v1(E)	122	# 5	4'-4"	—
v2	112	# 10	20'-10"	—
sp	14	# 4	21'-4"	M

Item	Quantity	Unit
Reinforcement Bars, Epoxy Coated	13,830	Pound
Reinforcement Bars	10,040	Pound
Structure Excavation	246	Cu. Yd.
Concrete Structures	50.8	Cu. Yd.
Drilled Shaft in Soil	56.6	Cu. Yd.
Bar Splicers	22	Each
Pipe Underdrain for Structures, 4"	136	Foot
Geocomposite Wall Drain	44	Sq. Yd.
Porous Granular Embankment (Special)	86	Cu. Yd.

\*\* Length is height of spiral.

**NOTES:**

- For details of existing abutment removal, see sheet S-14.
- For details of Bar Splicers, see sheet S-15.
- Temporary casing is recommended for the drilled shafts due to the water table. See Standard Specifications for details.
- Minimum lap for Spirals is 2'-7".

**Clorba Group, Inc.**  
CONSULTING ENGINEERS  
5001 North Cicero Avenue  
Chicago, Illinois 60630  
Tel: 773.742.4000  
Fax: 773.742.4004  
Email: Chicago@clorba.com

USER NAME = rdanley	DESIGNED BWS	REVISED -
PLOT SCALE = 4.000000' / in.	CHECKED LVH	REVISED -
PLOT DATE = 10/25/2011	DRAWN RD	REVISED -
	CHECKED AMK	REVISED -

**STATE OF ILLINOIS  
DEPARTMENT OF TRANSPORTATION**

**ABUTMENT DETAILS  
STRUCTURE NO. 016-2818**

SHEET NO. S-13 OF S-17 SHEETS

F.A.U. RTE.	SECTION	COUNTY	TOTAL SHEETS	SHEET NO.
2742	3222-W-BR	COOK	51	38

CONTRACT NO. 62116  
ILLINOIS FED. AID PROJECT