

SUMMARY OF QUANTITIES			CONSTRUCTION TYPE CODE											
CODE NO.	DESCRIPTION	UNIT	URBAN	0003 ROADWAY IL. RTE. 64	0021 LIGHTING IL. RTE. 64	0021 T.S. AT 7TH AVE. 80% FED. 10% STATE 10% ST. CH	0021 T.S. AT TYLER 80% FED. 10% STATE 10% ST. CH	0021 T.S. AT DUNHAM 80% FED. 10% STATE 5% ST. CH 5% KANE	0021 INTER CONNECT 80% FED. 20% STATE #	0021 SIGNING	0043 WATER MAIN	0021		
			TOTAL QUANTITIES	80% FED. 20% STATE	100% ST. CHARLES						80% FED. 20% STATE	100% ST. CHARLES	100% ST. CHARLES	
50300225	CONCRETE STRUCTURES	CU YD	140.5	140.5										
50300285	FORM LINER TEXTURED SURFACE	SQ FT	2,356	2,356										
50500505	STUD SHEAR CONNECTORS	EACH	1,337	1,337										
50800105	REINFORCEMENT BARS	POUND	3,230	3,230										
50800205	REINFORCEMENT BARS, EPOXY COATED	POUND	20,140	20,140										
50901750	PARAPET RAILING	FOOT	333	333										
54001001	BOX CULVERT END SECTIONS, CULVERT NO. 1	EACH	1	1										
54001002	BOX CULVERT END SECTIONS, CULVERT NO. 2	EACH	2	2										
54002070	EXPANSION BOLTS 3/4 INCH x 15 INCH	EACH	48	48										
54003000	CONCRETE BOX CULVERTS	CU YD	14	14										
54010504	PRECAST CONCRETE BOX CULVERTS 5' x 4'	FOOT	22	22										
X5400903	PRECAST CONCRETE BOX CULVERTS 9' x 3' (SPECIAL)	FOOT	168	168										
54213657	PRECAST REINFORCED CONCRETE FLARED END SECTIONS, 12"	EACH	1	1										
54213681	PRECAST REINFORCED CONCRETE FLARED END SECTIONS 36"	EACH	1	1										
550A0050	STORM SEWERS, CLASS A, TYPE 1, 12"	FOOT	1,676	1,676										
550A0070	STORM SEWERS, CLASS A, TYPE 1, 15"	FOOT	312	312										
550A0090	STORM SEWERS, CLASS A, TYPE 1, 18"	FOOT	129	129										
550A0120	STORM SEWERS, CLASS A, TYPE 1, 24"	FOOT	7	7										
550A0160	STORM SEWERS, CLASS A, TYPE 1, 36"	FOOT	115	115										
550A0340	STORM SEWERS, CLASS A, TYPE 2, 12"	FOOT	2,436	2,436										
550A0360	STORM SEWERS, CLASS A, TYPE 2, 15"	FOOT	1,054	1,054										
550A0380	STORM SEWERS, CLASS A, TYPE 2, 18"	FOOT	278	278										
550A0400	STORM SEWERS, CLASS A, TYPE 2, 21"	FOOT	239	239										
550A0410	STORM SEWERS, CLASS A, TYPE 2, 24"	FOOT	735	735										
550A0430	STORM SEWERS, CLASS A, TYPE 2, 30"	FOOT	733	733										
550A0450	STORM SEWERS, CLASS A, TYPE 2, 36"	FOOT	134	134										
550A4500	STORM SEWERS, CLASS A, TYPE 1, EQUIVALENT ROUND-SIZE, 36"	FOOT	159	159										
56100500	WATER MAIN, 4"	FOOT	5								5			
56100600	WATER MAIN, 6"	FOOT	222								222			
56100700	WATER MAIN, 8"	FOOT	2,354								2,354			
56100800	WATER MAIN, 10"	FOOT	1,695								1,695			
56100900	WATER MAIN, 12"	FOOT	1,002								1,002			
56104900	WATER VALVES, 6"	EACH	3								3			
56105000	WATER VALVES, 8"	EACH	9								9			

* SPECIALTY ITEM

80% FED. SHARE SHALL UTILIZE CMAQ FUNDS #

Rev. 1-11-12

CR & A
CHRISTIAN-ROGE & ASSOCIATES, INC.
 ENGINEERS-PLANNERS-SURVEYORS
 211 WEST WACKER DRIVE
 CHICAGO, ILLINOIS 60606
 1-312-372-2023 FAX: 1-312-372-5274

REVISIONS	
NAME	DATE

ILLINOIS DEPARTMENT OF TRANSPORTATION

SUMMARY OF QUANTITIES
 ILLINOIS ROUTE 64

SCALE: 1" = 50'
 DATE: OCTOBER 26, 2011

DRAWN BY B.K.
 CHECKED BY S.J.P.

FILE NAME = D:\62195-ah1-500.dgn
 PLOT DATE = 10/26/2011
 PLOT SCALE = 5/8" = 1' / IN.

SUMMARY OF QUANTITIES			CONSTRUCTION TYPE CODE											
			URBAN	0003 ROADWAY IL. RTE. 64	0021 LIGHTING IL. RTE. 64	0021 T.S. AT 7TH AVE. 80% FED. 10% STATE 10% ST. CH	0021 T.S. AT TYLER 80% FED. 10% STATE 10% ST. CH	0021 T.S. AT DUNHAM 80% FED. 10% STATE 5% ST. CH 5% KANE	0021 INTER CONNECT 80% FED. 20% STATE #	0021 SIGNING	0043 WATER MAIN	0021		
CODE NO.	DESCRIPTION	UNIT	TOTAL QUANTITIES	80% FED. 20% STATE	100% ST. CHARLES					80% FED. 20% STATE	100% ST. CHARLES	100% ST. CHARLES		
56105100	WATER VALVES, 10"	EACH	4								4			
56105200	WATER VALVES, 12"	EACH	4								4			
56200300	WATER SERVICE LINE, 1"	FOOT	61								61			
56200500	WATER SERVICE LINE, 1 1/2"	FOOT	68								68			
56200700	WATER SERVICE LINE, 2"	FOOT	31								31			
56201400	CORPORATION STOPS, 1"	EACH	2								2			
56201600	CORPORATION STOPS, 1 1/2"	EACH	2								2			
56201800	CORPORATION STOPS, 2"	EACH	1								1			
56400100	FIRE HYDRANTS TO BE MOVED	EACH	3								3			
56400500	FIRE HYDRANTS TO BE REMOVED	EACH	8								8			
56400820	FIRE HYDRANT WITH AUXILIARY VALVE AND VALVE BOX	EACH	13								13			
59100100	GEOCOMPOSITE WALL DRAIN	SQ YD	121	121										
60100905	PIPE DRAINS 4"	FOOT	35	35										
60107600	PIPE UNDERDRAINS, 4"	FOOT	1,200	1,200										
60200105	CATCH BASINS, TYPE A, 4'-DIAMETER, TYPE 1 FRAME, OPEN LID	EACH	15	15										
60200305	CATCH BASINS, TYPE A, 4'-DIAMETER, TYPE 3 FRAME AND GRATE	EACH	1	1										
60200805	CATCH BASINS, TYPE A, 4'-DIAMETER, TYPE 8 GRATE	EACH	3	3										
60201340	CATCH BASINS, TYPE A, 4'-DIAMETER, TYPE 24 FRAME AND GRATE	EACH	90	90										
60204005	CATCH BASINS, TYPE A, 5'-DIAMETER, TYPE 3 FRAME AND GRATE	EACH	1	1										
60206905	CATCH BASINS, TYPE C, TYPE 1 FRAME, OPEN LID	EACH	5	5										
60207605	CATCH BASINS, TYPE C, TYPE 8 GRATE	EACH	9	9										
60208240	CATCH BASINS, TYPE C, TYPE 24 FRAME AND GRATE	EACH	4	4										
60218400	MANHOLES, TYPE A, 4'-DIAMETER, TYPE 1 FRAME, CLOSED LID	EACH	12	12										
60221100	MANHOLES, TYPE A, 5'-DIAMETER, TYPE 1 FRAME, CLOSED LID	EACH	20	20										
60223700	MANHOLES, TYPE A, 6'-DIAMETER, TYPE 1 FRAME, OPEN LID	EACH	1	1										
60223800	MANHOLES, TYPE A, 6'-DIAMETER, TYPE 1 FRAME, CLOSED LID	EACH	7	7										
60234200	INLETS, TYPE A, TYPE 1 FRAME, OPEN LID	EACH	2	2										
60236200	INLETS, TYPE A, TYPE 8 GRATE	EACH	2	2										
60248700	VALVE VAULTS, TYPE A, 4'-DIAMETER, TYPE 1 FRAME, CLOSED LID	EACH	5								5			
60248900	VALVE VAULTS, TYPE A, 5'-DIAMETER, TYPE 1 FRAME, CLOSED LID	EACH	16								16			
60250200	CATCH BASINS TO BE ADJUSTED	EACH	3	3										
60255500	MANHOLES TO BE ADJUSTED	EACH	9	9										
60255700	MANHOLES TO BE ADJUSTED WITH NEW TYPE 1 FRAME, OPEN LID	EACH	4	4										
60257900	MANHOLES TO BE RECONSTRUCTED	EACH	2	2										
60260100	INLETS TO BE ADJUSTED	EACH	4	4										

* SPECIALTY ITEM

80% FED. SHARE SHALL UTILIZE CMAQ FUNDS #

Rev. 1-11-12

CR & A
CHRISTIAN-ROGE & ASSOCIATES, INC.
 ENGINEERS-PLANNERS-SURVEYORS
 211 WEST WACKER DRIVE
 CHICAGO, ILLINOIS 60606
 1-312-372-2023 FAX: 1-312-372-5274

REVISIONS	
NAME	DATE

ILLINOIS DEPARTMENT OF TRANSPORTATION

SUMMARY OF QUANTITIES
ILLINOIS ROUTE 64

SCALE: 1" = 50'
DATE: OCTOBER 26, 2011

DRAWN BY B.K.
CHECKED BY S.J.P.

SUMMARY OF QUANTITIES			CONSTRUCTION TYPE CODE											
			URBAN	0003 ROADWAY IL. RTE. 64	0021 LIGHTING IL. RTE. 64	0021 T.S. AT 7TH AVE. 80% FED. 10% STATE 10% ST. CH	0021 T.S. AT TYLER 80% FED. 10% STATE 10% ST. CH	0021 T.S. AT DUNHAM 80% FED. 10% STATE 5% ST. CH 5% KANE	0021 INTER CONNECT 80% FED. 20% STATE #	0021 SIGNING	0043 WATER MAIN	0021		
CODE NO.	DESCRIPTION	UNIT	TOTAL QUANTITIES	80% FED. 20% STATE	100% ST. CHARLES					80% FED. 20% STATE	100% ST. CHARLES	100% ST. CHARLES		
* 78000400	THERMOPLASTIC PAVEMENT MARKING - LINE 6"	FOOT	5,057	5,057										
* 78000500	THERMOPLASTIC PAVEMENT MARKING - LINE 8"	FOOT	142	142										
* 78000600	THERMOPLASTIC PAVEMENT MARKING - LINE 12"	FOOT	467	467										
* 78000650	THERMOPLASTIC PAVEMENT MARKING - LINE 24"	FOOT	582	582										
* 78008200	POLYUREA PAVEMENT MARKING, TYPE I - LETTERS AND SYMBOLS	SQ FT	156	156										
* 78008210	POLYUREA PAVEMENT MARKING, TYPE I - LINE 4"	FOOT	2,278	2,278										
* 78008230	POLYUREA PAVEMENT MARKING, TYPE I - LINE 6"	FOOT	751	751										
* 78008250	POLYUREA PAVEMENT MARKING, TYPE I - LINE 12"	FOOT	70	70										
* 78008270	POLYUREA PAVEMENT MARKING, TYPE I - LINE 24"	FOOT	208	208										
* 78100100	RAISED REFLECTIVE PAVEMENT MARKER	EACH	734	734										
78100200	TEMPORARY RAISED REFLECTIVE PAVEMENT MARKER	EACH	391	391										
78300100	PAVEMENT MARKING REMOVAL	SQ FT	6,205	6,205										
78300200	RAISED REFLECTIVE PAVEMENT MARKER REMOVAL	EACH	734	734										
* 80400100	ELECTRIC SERVICE INSTALLATION	EACH	2		2									
* 80400200	ELECTRIC UTILITY SERVICE CONNECTION	L SUM	1		1									
* 80500020	SERVICE INSTALLATION - POLE MOUNTED	EACH	3			1	1	1						
* 81028200	UNDERGROUND CONDUIT, GALVANIZED STEEL, 2" DIA.	FOOT	8,212		105	255	969	910	2,416				***3,557	
* 81028210	UNDERGROUND CONDUIT, GALVANIZED STEEL, 2 1/2" DIA.	FOOT	59				36	23						
* 81028220	UNDERGROUND CONDUIT, GALVANIZED STEEL, 3" DIA.	FOOT	4,213		4,060		64	89						
* 81028240	UNDERGROUND CONDUIT, GALVANIZED STEEL, 4" DIA.	FOOT	1,096				564	532						
* 81028250	UNDERGROUND CONDUIT, GALVANIZED STEEL, 5" DIA.	FOOT	170		170									
* 81028370	UNDERGROUND CONDUIT, PVC, 3" DIA.	FOOT	515		515									
* 81400100	HANDHOLE	EACH	18			1	4	4	3				*** 6	
* 81400200	HEAVY-DUTY HANDHOLE	EACH	8				4	4						
* 81400300	DOUBLE HANDHOLE	EACH	4				2	2						
* 81603110	UNIT DUCT, 600V, 4-1/C NO.4, 1/C NO.6 GROUND, (XLP-TYPE USE), 1 1/2" DIA. POLYETHYLENE	FOOT	15,300		15,300									
* 81702180	ELECTRIC CABLE IN CONDUIT, 600V (XLP-TYPE USE) 1/C NO. 3/0	FOOT	405		405									
* 81800410	AERIAL CABLE, 4-1/C NO. 4 WITH MESSENGER WIRE	FOOT	4,080		4,080									
* 82102310	LUMINAIRE, SODIUM VAPOR, HORIZONTAL MOUNT, 310 WATT	EACH	82		82									
* 82103310	LUMINAIRE, SODIUM VAPOR, HORIZONTAL MOUNT, PHOTO-CELL CONTROL, 310 WATT	EACH	19		19									
* 83050760	LIGHT POLE, ALUMINUM, 47.5 FT. M.H., 8 FT. MAST ARM	EACH	1		1									
* 83050810	LIGHT POLE, ALUMINUM, 47.5 FT. M.H., 15 FT. MAST ARM	EACH	79		79									
* 83050910	LIGHT POLE, ALUMINUM, 47.5 FT. M.H., 2-15 FT. MAST ARMS	EACH	1		1									
* 83057355	LIGHT POLE, WOOD, 60 FOOT, CLASS 4, WITH 15 FT. MAST ARM	EACH	17		17									
* 83600200	LIGHT POLE FOUNDATION, 24" DIAMETER	FOOT	567		567									
* 83057356	LIGHT POLE, WOOD, 60 FOOT, CLASS 4, WITH TWO 15 FT. MAST ARM	EACH	1		1									

* SPECIALTY ITEM

FOR INTERCONNECT ***

80% FED. SHARE SHALL UTILIZE CMAQ FUNDS #

ILLINOIS DEPARTMENT OF TRANSPORTATION

SUMMARY OF QUANTITIES
ILLINOIS ROUTE 64

REVISIONS	
NAME	DATE

CR & A
CHRISTIAN-ROGE & ASSOCIATES, INC.
 ENGINEERS-PLANNERS-SURVEYORS
 211 WEST WACKER DRIVE
 CHICAGO, ILLINOIS 60606
 1-312-372-2023 FAX: 1-312-372-5274

SCALE: 1" = 50'
 DATE: OCTOBER 26, 2011
 DRAWN BY B.K.
 CHECKED BY S.J.P.

FILE NAME = D:\E2196-ahh-500.dgn
 PLOT DATE = 10/26/2011
 PLOT SCALE = 50.0000 sf / in.

Rev. 1-11-12

SUMMARY OF QUANTITIES			CONSTRUCTION TYPE CODE										
			URBAN	0003 ROADWAY IL. RTE. 64	0021 LIGHTING IL. RTE. 64	0021 T.S. AT 7TH AVE. 80% FED. 10% STATE 10% ST. CH	0021 T.S. AT TYLER 80% FED. 10% STATE 10% ST. CH	0021 T.S. AT DUNHAM 80% FED. 10% STATE 5% ST. CH 5% KANE	0021 INTER CONNECT 80% FED. 20% STATE #	0021 SIGNING	0043 WATER MAIN	0021	
CODE NO.	DESCRIPTION	UNIT	TOTAL QUANTITIES	80% FED. 20% STATE	100% ST. CHARLES				80% FED. 20% STATE	100% ST. CHARLES	100% ST. CHARLES		
Z0056608	STORM SEWER (WATER MAIN REQUIREMENTS) 12 INCH	FOOT	1,044	1,044									
Z0056610	STORM SEWER (WATER MAIN REQUIREMENTS) 15 INCH	FOOT	688	688									
Z0056612	STORM SEWER (WATER MAIN REQUIREMENTS) 18 INCH	FOOT	246	246									
Z0056616	STORM SEWER (WATER MAIN REQUIREMENTS) 24 INCH	FOOT	20	20									
Z0062456	TEMPORARY PAVEMENT	SQ YD	899	899									
Z0073510	TEMPORARY TRAFFIC SIGNAL TIMING	EACH	2				1						
Z0076600	TRAINEES	HOUR	1,000	1,000									
A2005020	TREE, GYMNOCLADUS DIOICUS (KENTUCKY COFFEETREE) 2-1/2" CALIPER, BALLED AND BURLAPPED	EACH	20	20									
B2001620	TREE, CRATAEGUS CRUSGALLI INERMIS (THORNLESS COCKSPUR HAWTHORN) 2-1/2" CALIPER TREE FORM, BALLED AND BURLAPPED	EACH	6	6									
K0029634	WEED CONTROL, PRE-EMERGENT GRANULAR HERBICIDE	POUND	2	2									
X5620126	WATER SERVICE LINE, SPECIAL	FOOT	750							750			
	WATER SERVICE LINE, LONG, 1" TO 2"	EACH	14							14			
XX000739	CURB STOP AND BOX, 1"	EACH	2							2			
XX006266	CURB STOP AND BOX, 1 1/2"	EACH	2							2			
X0324693	CURB STOP AND BOX, 2"	EACH	1							1			
XX006584	CURB STOP AND BOX TO BE REMOVED	EACH	18							18			
Z0067900	STEEL CASINGS 24"	FOOT	835							835			
X4420828	CLASS D PATCHES, TYPE III, 12 INCH (SPECIAL) PAVEMENT PATCHING	SQ YD	102							102			
	PAVEMENT PATCHING	SQ YD	102							102			
X5610011	REMOVAL OF ASBESTOS WATER MAIN	FOOT	28							28			
X4420693	CLASS B PATCHES, SPECIAL, TYPE I, 13 INCH	SQ YD	4							4			
X4420742	CLASS C PATCHES, SPECIAL, TYPE II, 12 INCH	SQ YD	18							18			
X6026622	VALVE VAULTS TO BE REMOVED	EACH	11							11			
X8620200	UNINTERRUPTABLE POWER SUPPLY, SPECIAL	EACH	3				1					1	
X9024100	TEMPORARY ACCESS WINTERIZE	SQ YD	500	500									

0042 SPECIALTY ITEM

80% FED. SHARE SHALL UTILIZE CMAQ FUNDS #

CR & A
CHRISTIAN-ROGE & ASSOCIATES, INC.
 ENGINEERS-PLANNERS-SURVEYORS
 211 WEST WACKER DRIVE
 CHICAGO, ILLINOIS 60606
 1-312-372-2023 FAX: 1-312-372-5274

REVISIONS	
NAME	DATE

ILLINOIS DEPARTMENT OF TRANSPORTATION

SUMMARY OF QUANTITIES
ILLINOIS ROUTE 64

SCALE: 1" = 50'
DATE: OCTOBER 26, 2011

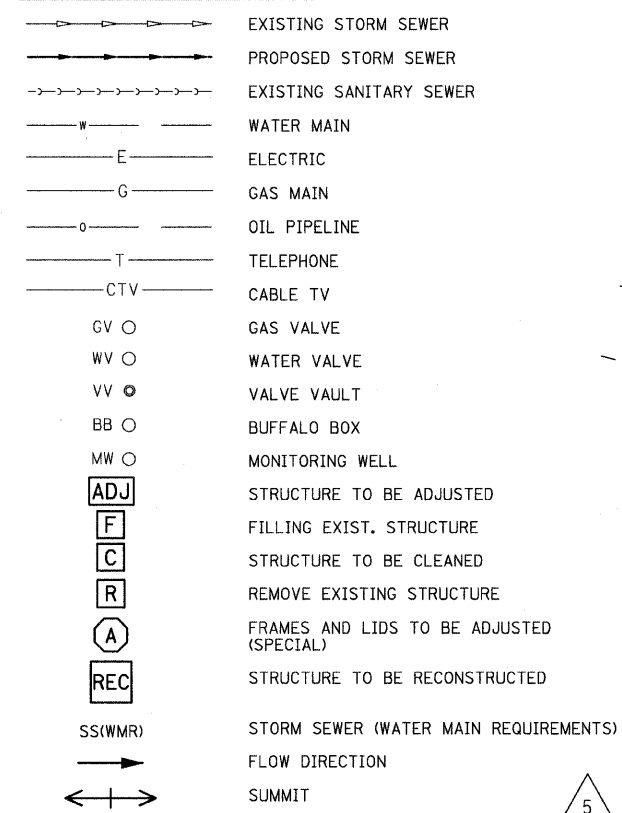
DRAWN BY B.K.
CHECKED BY S.J.P.

FILE NAME = D:\2195-ant-500.dgn
 PLOT DATE = 10/26/2011
 PLOT SCALE = 50.00000 FT / IN.

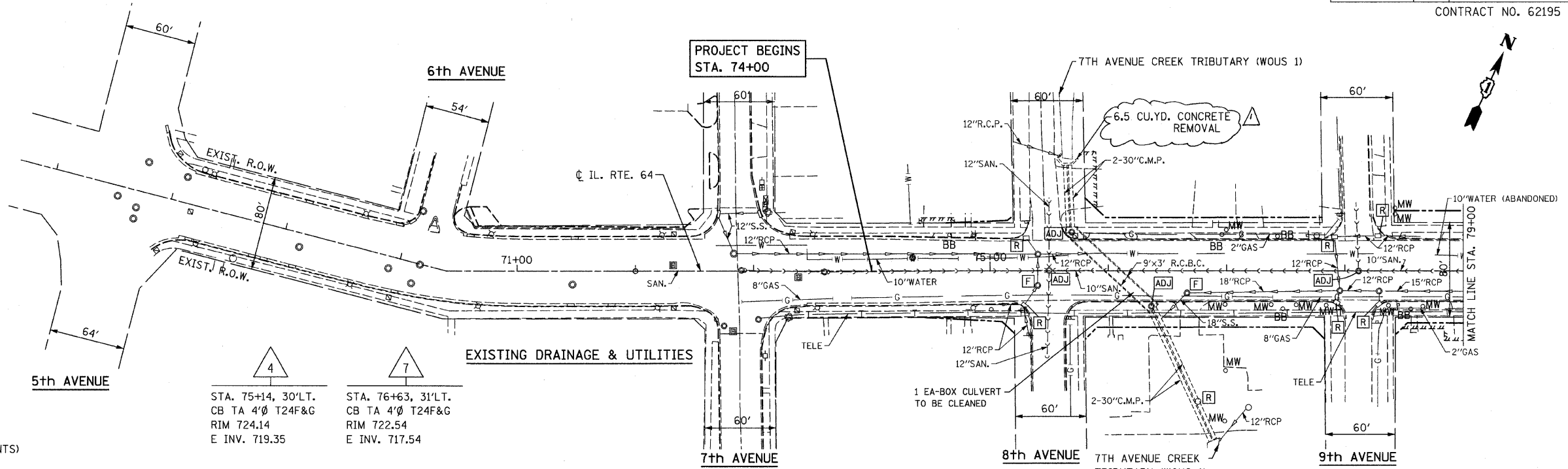
Rev. 1-11-12

F.A.P. RTE.	SECTION	COUNTY	TOTAL SHEETS	SHEET NO.
307	129-R-2	KANE	243	64
STA.	TO STA.			
FED. ROAD DIST. NO. 1	ILLINOIS	FED. AID PROJECT		
CONTRACT NO. 62195				

EXISTING UTILITIES LEGEND



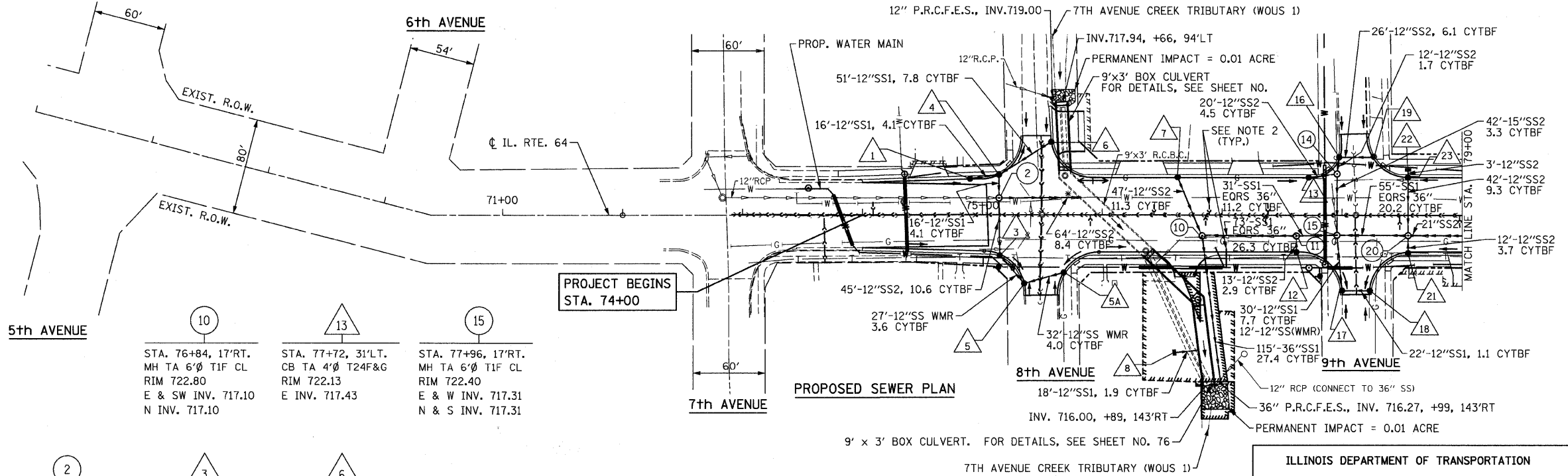
CITY OF ST. CHARLES



Station	Structure	Material	Dimensions	Rim	Invert
STA. 75+14, 30'LT.	CB TA 4'Ø T24F&G			RIM 724.14	E INV. 719.35
STA. 76+63, 31'LT.	CB TA 4'Ø T24F&G			RIM 722.54	E INV. 717.54
STA. 75+35, 57'RT.	CB TA 4'Ø T1F OL			RIM 722.85	NW INV. 719.55
STA. 76+80, 70.5'RT.	INLET TY A T1F OL			RIM 719.50	E INV. 717.00
STA. 77+62, 18'RT.	MH TA 6'Ø T1F CL			RIM 722.42	E & W INV. 717.25 S INV. 717.62
STA. 77+96, 33.5'LT.	MH TA 4'Ø T1F CL			RIM 722.07	S & W INV. 717.53 N INV. 718.00
STA. 77+98, 44'LT.	CB TA 4'Ø T1F OL			RIM 721.90	S INV. 717.10
STA. 78+00, 61'RT.	CB TA 4'Ø T1F OL			RIM 720.10	N & E INV. 717.41
STA. 78+23, 61'RT.	CB TY C T1F OL			RIM 720.20	W INV. 717.51
STA. 78+26, 48'LT.	CB TA 4'Ø T1F OL			RIM 722.00	W INV. 718.30
STA. 78+55, 17'RT.	MH TA 6'Ø T1F CL			RIM 722.61	E & W INV. 717.36 N & S INV. 717.36
STA. 78+55, 31'RT.	CB TA 4'Ø T24F&G			RIM 722.33	N INV. 717.50
STA. 78+55, 37'LT.	INLET TY A T8G			RIM 722.60	S INV. 719.30
STA. 78+55, 31'RT.	CB TA 4'Ø T24F&G			RIM 722.31	N & S INV. 717.78

DRAINAGE GENERAL NOTE:

1. ALL OFFSETS GIVEN FOR STRUCTURE LOCATION ARE AT E.O.P. UNLESS STRUCTURE IS NOT AT E.O.P. FOR WHICH THE OFFSET WILL BE TO THE CENTER OF STRUCTURE.
2. SEE SCHEDULE FOR ANTICIPATED LOCATIONS OF ASBESTOS WATERMAIN REMOVAL.
3. THE GENERAL CONTRACTOR IS REQUIRED TO HIRE AN ENVIRONMENTAL FIRM WITH AT LEAST FIVE (5) DOCUMENTED LEAKING UNDERGROUND STORAGE TANK (LUST) CLEANUPS OR THAT IS PRE-QUALIFIED IN HAZARDOUS WASTE BY THE DEPARTMENT TO REMEDIATE THE SOIL CONTAMINATION AND MONITOR FOR WORKER PROTECTION.



Station	Structure	Material	Dimensions	Rim	Invert
STA. 75+68, 48'RT.	CB TY C T1F OL			RIM 722.55	INV. 719.70
STA. 77+62, 31'RT.	CB TA 4'Ø T24F&G			RIM 722.16	N INV. 717.64
STA. 76+84, 17'RT.	MH TA 6'Ø T1F CL			RIM 722.80	E & SW INV. 717.10 N INV. 717.10
STA. 77+72, 31'LT.	CB TA 4'Ø T24F&G			RIM 722.13	E INV. 717.43
STA. 77+96, 17'RT.	MH TA 6'Ø T1F CL			RIM 722.40	E & W INV. 717.31 N & S INV. 717.31
STA. 74+90, 29.6' LT.	CB TA 4'Ø T1F OL			RIM 723.79	NE & S INV. 719.05
STA. 75+14, 14'LT.	MH TA 5'Ø T1F CL			RIM 724.17	W INV. (718.90) E INV. 718.90 N & S INV. 718.90
STA. 75+15, 33'RT.	CB TA 4'Ø T1F OL			RIM 723.55	SE & N INV. 719.35
STA. 75+58, 61'LT.	CB TY C T1F OL			RIM 722.80	W INV. 719.60

* MATCH EXIST. INV. OF 12" SEWER AT 9'x3' BOX CULVERT

- NOTES:**
1. FOR DRAINAGE PROFILE SEE SHEET NO. 70.
 2. WATER AND SANITARY SERVICES, APPROX. LOCATIONS.

Rev. 1-11-12

CHRISTIAN-ROGE & ASSOCIATES, INC.
 ENGINEERS-PLANNERS-SURVEYORS
 211 WEST WACKER DRIVE
 CHICAGO, ILLINOIS 60606
 1-312-372-2023 FAX: 1-312-372-5274

NAME	DATE

ILLINOIS DEPARTMENT OF TRANSPORTATION

EXISTING AND PROPOSED DRAINAGE AND UTILITIES
 STA. 71+00 TO STA. 79+00
 ILLINOIS ROUTE 64

SCALE: 1" = 50'
 DATE: SEPTEMBER 22, 2011

DRAWN BY B.K.
 CHECKED BY S.J.P.

FILE NAME = r:\06\Auto\1121.dgn
 PLOT DATE = 9/23/2011
 PLOT SCALE = 50.0000 ft. / in.

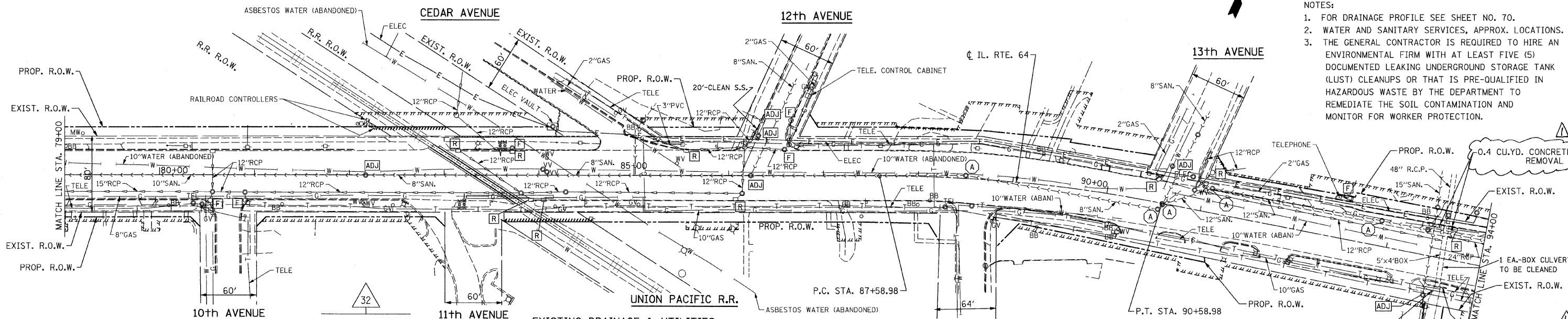
• VERIFY EXISTING PIPE LOCATION AND INVERT

CITY OF ST. CHARLES

F.A.P. RTE.	SECTION	COUNTY	TOTAL SHEETS	SHEET NO.
307	129-R-2	KANE	243	65
STA.		TO STA.		
FED. ROAD DIST. NO. 1		ILLINOIS FED. AID PROJECT		
CONTRACT NO. 62195				

NOTES:

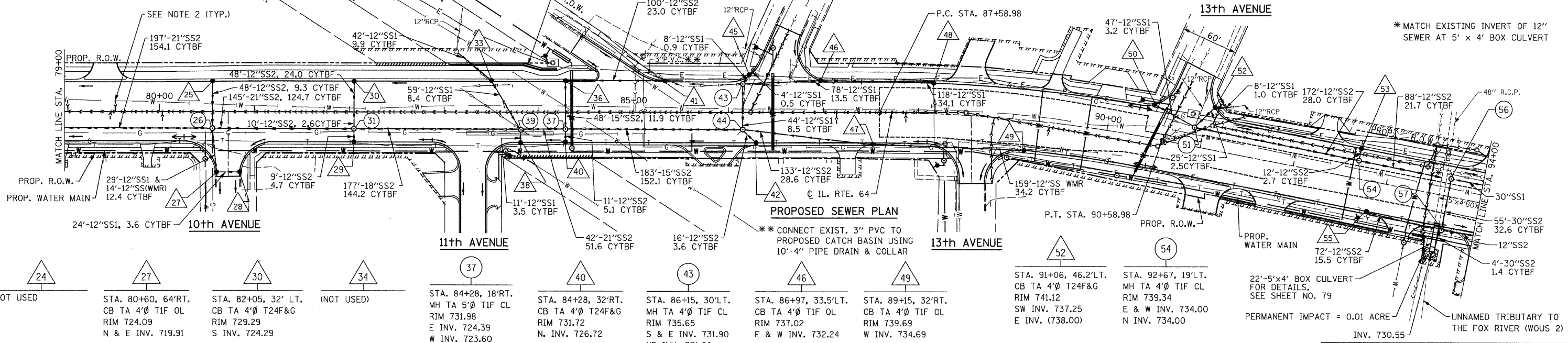
- FOR DRAINAGE PROFILE SEE SHEET NO. 70.
- WATER AND SANITARY SERVICES, APPROX. LOCATIONS.
- THE GENERAL CONTRACTOR IS REQUIRED TO HIRE AN ENVIRONMENTAL FIRM WITH AT LEAST FIVE (5) DOCUMENTED LEAKING UNDERGROUND STORAGE TANK (LUST) CLEANUPS OR THAT IS PRE-QUALIFIED IN HAZARDOUS WASTE BY THE DEPARTMENT TO REMEDIATE THE SOIL CONTAMINATION AND MONITOR FOR WORKER PROTECTION.



EXISTING DRAINAGE & UTILITIES

26	29	33	36	39	42	45	48	51	53	55	56	57
STA. 80+56, 18'RT. MH TA 5'Ø TIF CL RIM 725.90 W INV. 717.98 E INV. 719.48 N INV. 719.78 S INV. 719.48	STA. 82+05, 32'RT. CB TA 4'Ø T24F&G RIM 729.18 N INV. 724.90	STA. 83+50, 32'LT. CB TA 4'Ø T24F&G RIM 730.75 *N.W. INV. 728.00 S INV. 725.75	STA. 84+28, 32'LT. CB TA 4'Ø T24F&G RIM 731.72 E INV. 727.48 S INV. 727.48	STA. 83+82, 19'RT. MH TA 5'Ø TIF OL RIM 731.32 E & W INV. 723.12 S INV. 725.70 N INV. 725.00	STA. 86+30, 32'RT. CB TA 4'Ø T24F&G RIM 735.84 NE INV. 730.84	STA. 86+22, 40'LT. CB TA 4'Ø TIF OL RIM 735.61 SW INV. 732.05 NE INV. (733.20)	STA. 88+15, 32'LT. CB TA 4'Ø T24F&G RIM 738.67 W INV. 732.76	STA. 90+90, 20'LT. MH TA 4'Ø TIF CL RIM 741.03 E INV. 736.50 NW INV. 737.25 NE INV. 737.00 N INV. (738.89)	STA. 92+67, 32'LT. CB TA 4'Ø T24F&G RIM 739.14 S INV. 734.14	STA. 92+85, 32'RT. CB TA 4'Ø T24F&G RIM 738.96 E INV. 733.96	STA. 93+66, 19'LT. MH TA 5'Ø TIF CL RIM 738.37 E & S INV. 731.64	STA. 93+66, 36'RT. MH TA 5'Ø TIF CL RIM 738.55 E & W INV. 731.48 N INV. 731.48

PROPOSED SEWER PLAN



24	27	30	34	37	40	43	46	49	52	54
NOT USED	STA. 80+60, 64'RT. CB TA 4'Ø TIF OL RIM 724.09 N & E INV. 719.91	STA. 82+05, 32' LT. CB TA 4'Ø T24F&G RIM 729.29 S INV. 724.29	(NOT USED)	STA. 84+28, 18'RT. MH TA 5'Ø TIF CL RIM 731.98 E INV. 724.39 W INV. 723.60 SE INV. 726.49 N INV. 727.00	STA. 84+28, 32'RT. CB TA 4'Ø T24F&G RIM 731.72 N INV. 726.72	STA. 86+15, 30'LT. MH TA 4'Ø TIF CL RIM 735.65 S & E INV. 731.90 NE INV. 731.90	STA. 86+97, 33.5'LT. CB TA 4'Ø TIF OL RIM 737.02 E & W INV. 732.24	STA. 89+15, 32'RT. CB TA 4'Ø TIF OL RIM 739.69 W INV. 734.69	STA. 91+06, 46.2'LT. CB TA 4'Ø T24F&G RIM 741.12 SW INV. 737.25 E INV. (738.00)	STA. 92+67, 19'LT. MH TA 4'Ø TIF CL RIM 739.34 E & W INV. 734.00 N INV. 734.00
25	28	31	35	38	41	44	47	50	STA. 90+44, 35.2'LT. CB TA 4'Ø TIF OL RIM 740.87 SE INV. 737.41	
STA. 80+56, 32'LT. CB TA 4'Ø T24 F&G RIM 725.62 N INV. 722.00 S INV. 720.26	STA. 80+84, 64'RT. CB TY C TIF OL RIM 724.10 W INV. 720.15	STA. 82+05, 18'RT. MH TA 5'Ø TIF CL RIM 729.55 E & W INV. 721.20 N & S INV. 724.70	(NOT USED)	STA. 83+82, 32'RT. CB TA 4'Ø T24F&G RIM 731.05 W INV. 726.05	STA. 85+33, 32'LT. CB TA 4'Ø T24F&G RIM 733.83 W INV. 728.83	STA. 86+15, 18'RT. MH TA 5'Ø TIF CL RIM 735.90 W INV. 728.56 E INV. 730.75 N & SW INV. 730.75	STA. 87+52, 32'RT. CB TA 4'Ø T24F&G RIM 737.89 E & W INV. 732.89	STA. 90+44, 35.2'LT. CB TA 4'Ø TIF OL RIM 740.87 SE INV. 737.41	STA. 91+06, 46.2'LT. CB TA 4'Ø T24F&G RIM 741.12 SW INV. 737.25 E INV. (738.00)	

ILLINOIS DEPARTMENT OF TRANSPORTATION

EXISTING AND PROPOSED DRAINAGE AND UTILITIES
STA. 79+00 TO STA. 94+00
ILLINOIS ROUTE 64

SCALE: 1" = 50'
DATE: OCTOBER 26, 2011

DRAWN BY B.K.
CHECKED BY S.J.P.

Rev. 1-11-12

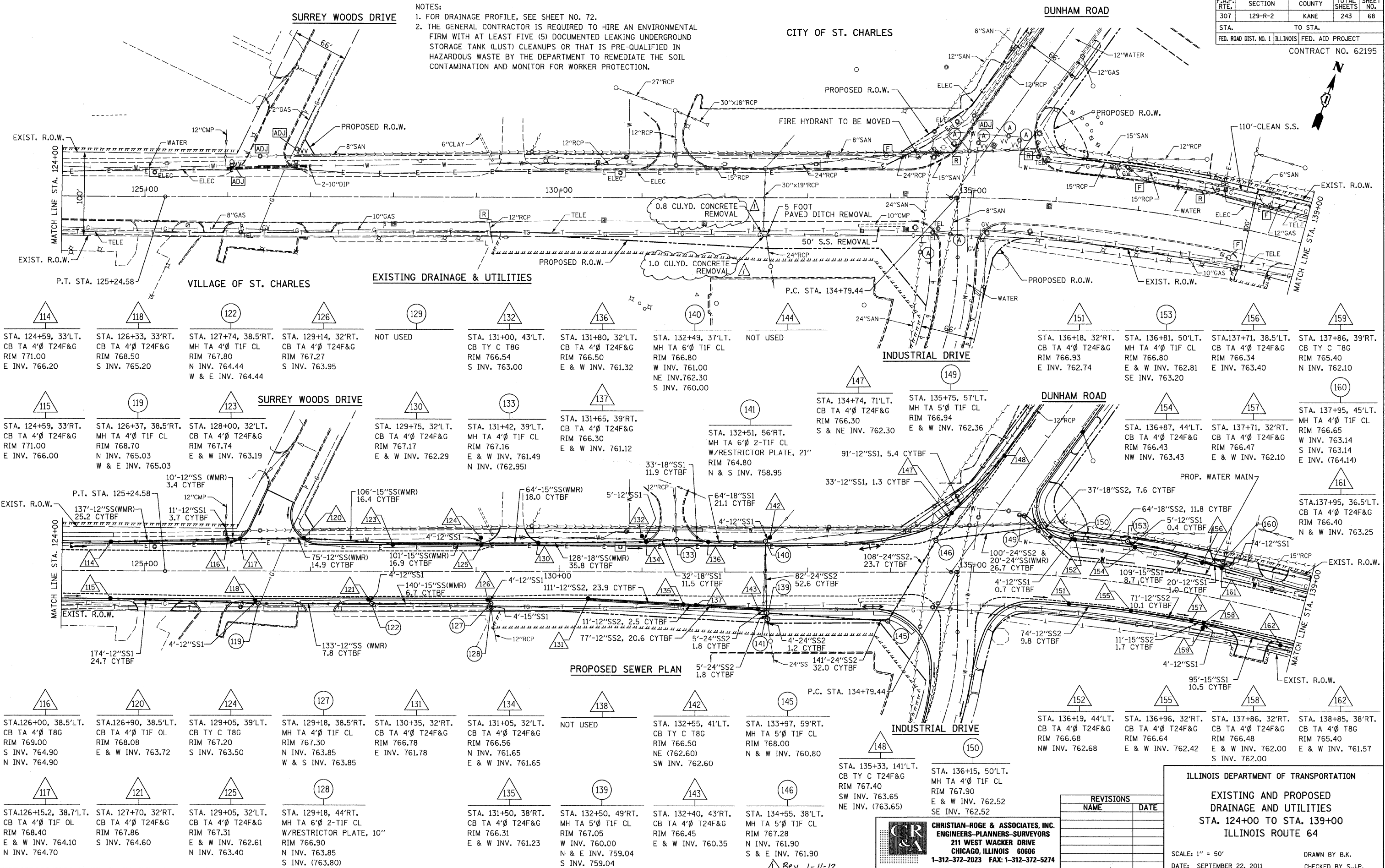
CHRISTIAN-ROGE & ASSOCIATES, INC.
ENGINEERS-PLANNERS-SURVEYORS
211 WEST WACKER DRIVE
CHICAGO, ILLINOIS 60606
1-312-372-2023 FAX: 1-312-372-5274

REVISIONS	
NAME	DATE

FILE NAME: r-r664-1102.dgn
PLOT DATE: 10/26/2011
PLOT SCALE: 50.0000 ft. / in.

F.A.P. RTE.	SECTION	COUNTY	TOTAL SHEETS	SHEET NO.
307	129-R-2	KANE	243	68
STA.		TO STA.		
FED. ROAD DIST. NO. 1		ILLINOIS FED. AID PROJECT		
CONTRACT NO. 62195				

NOTES:
 1. FOR DRAINAGE PROFILE, SEE SHEET NO. 72.
 2. THE GENERAL CONTRACTOR IS REQUIRED TO HIRE AN ENVIRONMENTAL FIRM WITH AT LEAST FIVE (5) DOCUMENTED LEAKING UNDERGROUND STORAGE TANK (LUST) CLEANUPS OR THAT IS PRE-QUALIFIED IN HAZARDOUS WASTE BY THE DEPARTMENT TO REMEDIATE THE SOIL CONTAMINATION AND MONITOR FOR WORKER PROTECTION.



114 STA. 124+59, 33'LT. CB TA 4'Ø T24F&G RIM 771.00 E INV. 766.20	118 STA. 126+33, 33'RT. CB TA 4'Ø T24F&G RIM 768.50 S INV. 765.20	122 STA. 127+74, 38.5'RT. MH TA 4'Ø TIF CL RIM 767.80 N INV. 764.44 W & E INV. 764.44	126 STA. 129+14, 32'RT. CB TA 4'Ø T24F&G RIM 767.27 S INV. 763.95	129 NOT USED	132 STA. 131+00, 43'LT. CB TY C T8G RIM 766.54 S INV. 763.00	136 STA. 131+80, 32'LT. CB TA 4'Ø T24F&G RIM 766.50 E & W INV. 761.32	140 STA. 132+49, 37'LT. MH TA 6'Ø TIF CL RIM 766.80 W INV. 761.00 NE INV. 762.30 S INV. 760.00	144 NOT USED	147 STA. 134+74, 71'LT. CB TA 4'Ø T24F&G RIM 766.30 S & NE INV. 762.30	149 STA. 135+75, 57'LT. MH TA 5'Ø TIF CL RIM 766.94 E & W INV. 762.36	151 STA. 136+18, 32'RT. CB TA 4'Ø T24F&G RIM 766.93 E INV. 762.74	153 STA. 136+81, 50'LT. MH TA 4'Ø TIF CL RIM 766.80 E & W INV. 762.81 SE INV. 763.20	156 STA. 137+71, 38.5'LT. CB TA 4'Ø T24F&G RIM 766.34 E INV. 763.40	159 STA. 137+86, 39'RT. CB TY C T8G RIM 765.40 N INV. 762.10								
115 STA. 124+59, 33'RT. CB TA 4'Ø T24F&G RIM 771.00 E INV. 766.00	119 STA. 126+37, 38.5'RT. MH TA 4'Ø TIF CL RIM 768.70 N INV. 765.03 W & E INV. 765.03	123 STA. 128+00, 32'LT. CB TA 4'Ø T24F&G RIM 767.74 E & W INV. 763.19	130 STA. 129+75, 32'LT. CB TA 4'Ø T24F&G RIM 767.17 E & W INV. 762.29	133 STA. 131+42, 39'LT. MH TA 4'Ø TIF CL RIM 767.16 E & W INV. 761.49 N INV. (762.95)	137 STA. 131+65, 39'RT. CB TA 4'Ø T24F&G RIM 766.30 E & W INV. 761.12	141 STA. 132+51, 56'RT. MH TA 6'Ø 2-TIF CL W/RESTRICTOR PLATE, 21" RIM 764.80 N & S INV. 758.95	142 91'-12"SS1, 5.4 CYTBF	143 33'-12"SS1, 1.3 CYTBF	144 37'-18"SS2, 7.6 CYTBF	145 64'-18"SS2, 11.8 CYTBF	146 5'-12"SS1, 0.4 CYTBF	147 5'-12"SS1, 0.7 CYTBF	148 109'-15"SS1, 8.7 CYTBF	149 20'-12"SS1, 1.0 CYTBF	150 71'-12"SS2, 10.1 CYTBF	151 11'-15"SS2, 1.7 CYTBF	152 4'-12"SS1, 10.5 CYTBF	153 95'-15"SS1, 10.5 CYTBF	154 STA. 136+87, 44'LT. CB TA 4'Ø T24F&G RIM 766.43 NW INV. 763.43	157 STA. 137+71, 32'RT. CB TA 4'Ø T24F&G RIM 766.47 E & W INV. 762.10	160 STA. 137+95, 45'LT. MH TA 4'Ø TIF CL RIM 766.65 W INV. 763.14 S INV. 763.14 E INV. (764.14)	161 STA. 137+95, 36.5'LT. CB TA 4'Ø T24F&G RIM 766.40 N & W INV. 763.25
116 STA. 126+00, 38.5'LT. CB TA 4'Ø T8G RIM 769.00 S INV. 764.90 N INV. 764.90	120 STA. 126+90, 38.5'LT. CB TA 4'Ø TIF OL RIM 768.00 E & W INV. 763.72	124 STA. 129+05, 39'LT. CB TY C T8G RIM 767.30 S INV. 763.50	127 STA. 129+18, 38.5'RT. MH TA 4'Ø TIF CL RIM 767.30 N INV. 763.85 W & S INV. 763.85	131 STA. 130+35, 32'RT. CB TA 4'Ø T24F&G RIM 766.78 E INV. 761.78	134 STA. 131+05, 32'LT. CB TA 4'Ø T24F&G RIM 766.56 N INV. 761.65 E & W INV. 761.65	138 NOT USED	142 STA. 132+55, 41'LT. CB TY C T8G RIM 766.50 NE (762.60) SW INV. 762.60	145 STA. 133+97, 59'RT. MH TA 5'Ø TIF CL RIM 768.00 N & W INV. 760.80	148 STA. 135+33, 141'LT. CB TY C T24F&G RIM 767.40 SW INV. 763.65 NE INV. (763.65)	150 STA. 136+15, 50'LT. MH TA 4'Ø TIF CL RIM 767.90 E & W INV. 762.52 SE INV. 762.52	152 STA. 136+19, 44'LT. CB TA 4'Ø T24F&G RIM 766.68 NW INV. 762.68	155 STA. 136+96, 32'RT. CB TA 4'Ø T24F&G RIM 766.64 E & W INV. 762.42	158 STA. 137+86, 32'RT. CB TA 4'Ø T24F&G RIM 766.48 E & W INV. 762.00	162 STA. 138+85, 38'RT. CB TA 4'Ø T8G RIM 765.40 E & W INV. 761.57 S INV. 762.00								
117 STA. 126+15.2, 38.7'LT. CB TA 4'Ø TIF OL RIM 768.40 E & W INV. 764.10 N INV. 764.70	121 STA. 127+70, 32'RT. CB TA 4'Ø T24F&G RIM 767.86 S INV. 764.60	125 STA. 129+05, 32'LT. CB TA 4'Ø T24F&G RIM 767.31 E & W INV. 762.61 N INV. 763.40	128 STA. 129+18, 44'RT. MH TA 6'Ø 2-TIF CL W/RESTRICTOR PLATE, 10" RIM 766.90 N INV. 763.85 S INV. (763.80)	135 STA. 131+50, 38'RT. CB TA 4'Ø T24F&G RIM 766.31 E & W INV. 761.23	139 STA. 132+50, 49'RT. MH TA 5'Ø TIF CL RIM 767.05 W INV. 760.00 N & E INV. 759.04 S INV. 759.04	143 STA. 132+40, 43'RT. CB TA 4'Ø T24F&G RIM 766.45 E & W INV. 760.35	146 STA. 134+55, 38'LT. MH TA 5'Ø TIF CL RIM 767.28 N INV. 761.90 S & E INV. 761.90															

ILLINOIS DEPARTMENT OF TRANSPORTATION

EXISTING AND PROPOSED DRAINAGE AND UTILITIES
 STA. 124+00 TO STA. 139+00
 ILLINOIS ROUTE 64

SCALE: 1" = 50'
 DATE: SEPTEMBER 22, 2011

DRAWN BY: B.K.
 CHECKED BY: S.J.P.

REVISIONS	
NAME	DATE

CHRISTIAN-ROGE & ASSOCIATES, INC.
 ENGINEERS-PLANNERS-SURVEYORS
 211 WEST WACKER DRIVE
 CHICAGO, ILLINOIS 60606
 1-312-372-2023 FAX: 1-312-372-5274

FILE NAME = r:\6644\1105.dgn
 PLOT DATE = 9/23/2011
 PLOT SCALE = 50.0000 Ft. / IN.

Rev. 1-11-12