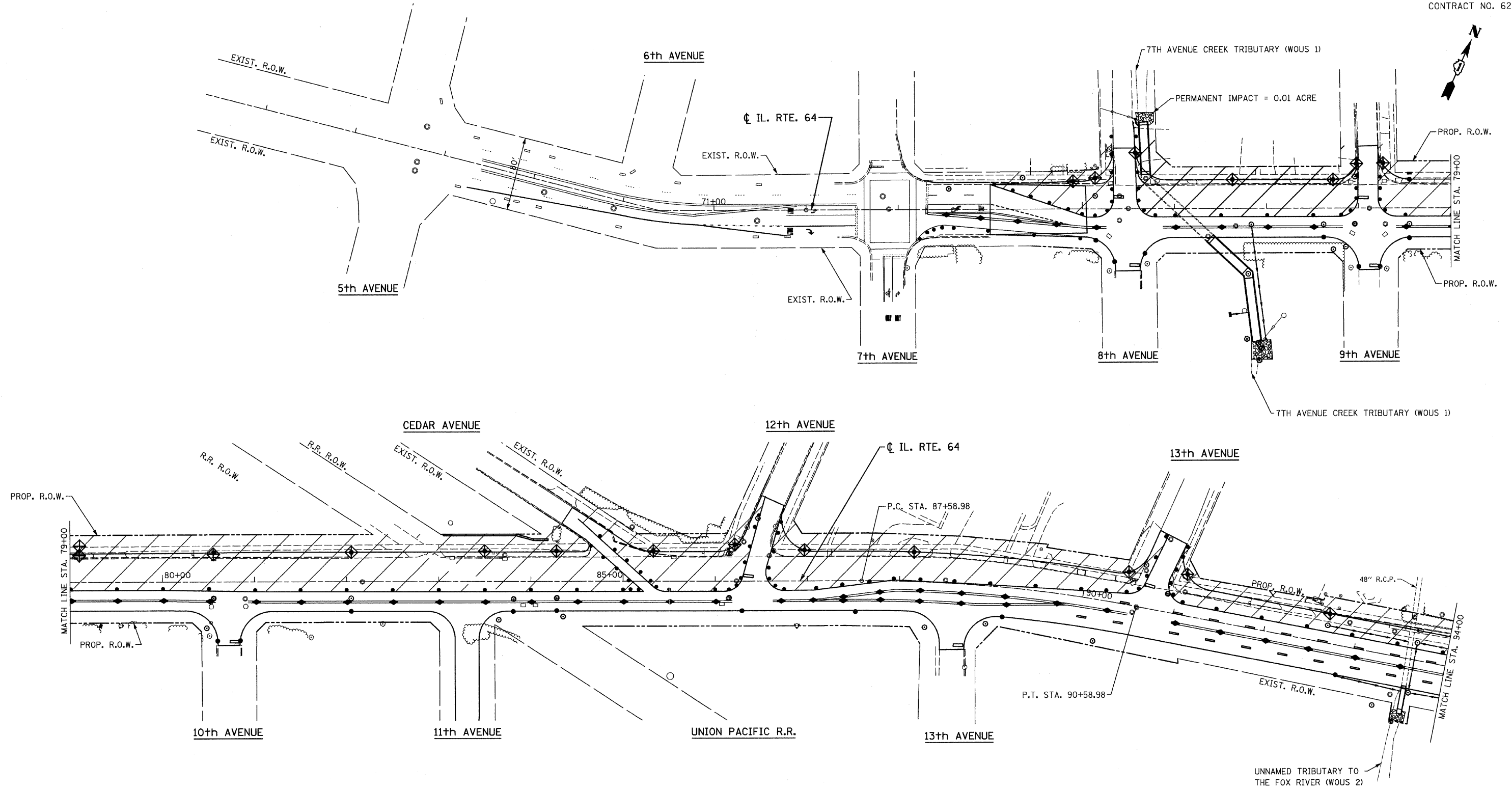


F.A.P. RTE.	SECTION	COUNTY	TOTAL SHEETS	SHEET NO.
307	129-R-2	KANE	243	37
STA.	TO STA.			
FED. ROAD DIST. NO. 1	ILLINOIS	FED. AID PROJECT		

CONTRACT NO. 62195



PROPOSED PLAN

NOTE: INSTALL 20 INLET FILTERS THIS SHEET.

CR & A
CHRISTIAN-ROGE & ASSOCIATES, INC.
 ENGINEERS-PLANNERS-SURVEYORS
 211 WEST WACKER DRIVE
 CHICAGO, ILLINOIS 60606
 1-312-372-2023 FAX: 1-312-372-5274

REVISIONS	
NAME	DATE

ILLINOIS DEPARTMENT OF TRANSPORTATION
 EROSION CONTROL PLAN - STAGE II
 STA. 74+00 TO STA. 94+00
 ILLINOIS ROUTE 64

SCALE: 1" = 50'
 DATE: AUGUST 10, 2011
 DRAWN BY B.K.
 CHECKED BY S.J.P.

FILE NAME = e:\econ\82a-64.dgn
 PLOT DATE = 9/12/2011
 PLOT SCALE = 50.0000 Ft / IN.