

• VERIFY EXISTING PIPE LOCATION AND INVERT

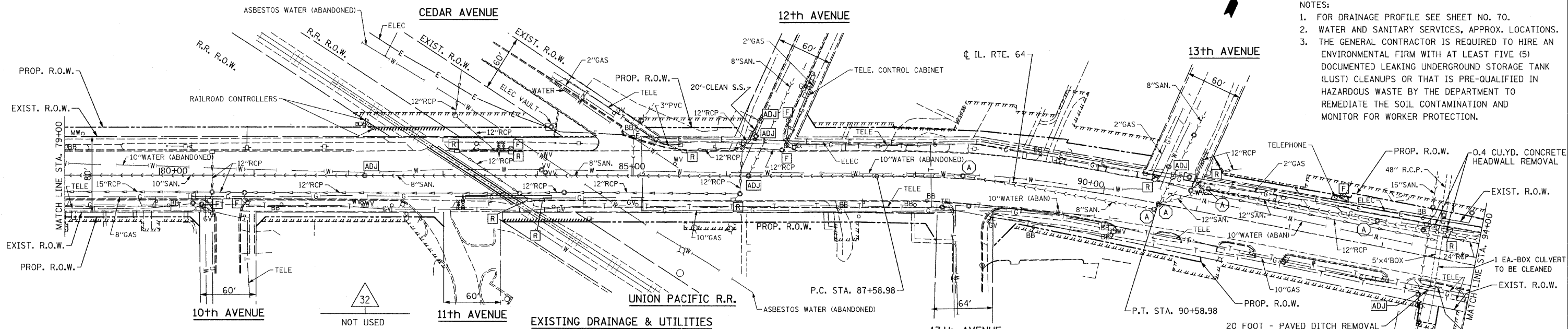
F.A.P. RTE.	SECTION	COUNTY	TOTAL SHEETS	SHEET NO.
307	129-R-2	KANE	243	65
STA.		TO STA.		
FED. ROAD DIST. NO. 1		ILLINOIS FED. AID PROJECT		
CONTRACT NO. 62195				

CITY OF ST. CHARLES



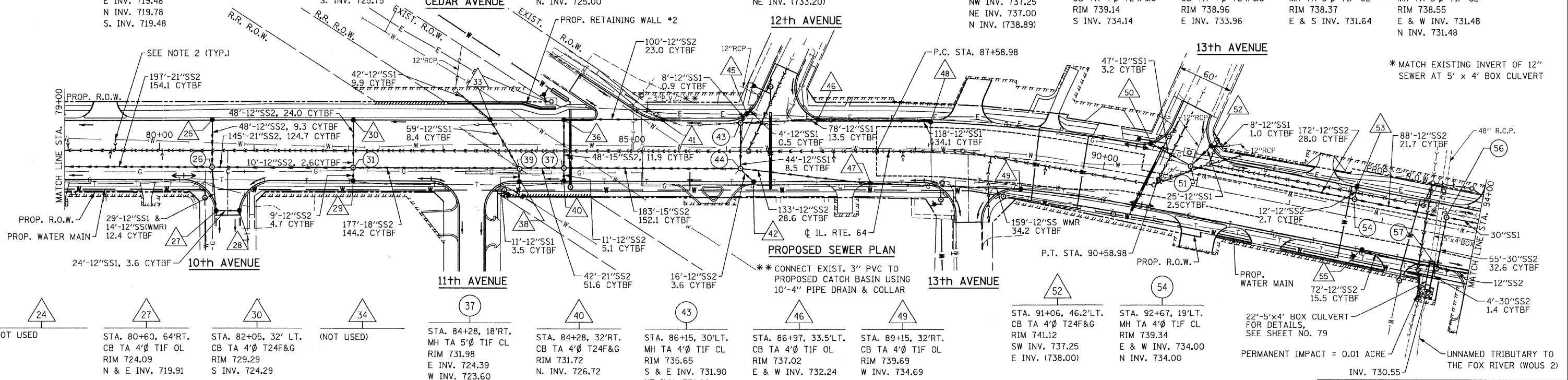
NOTES:

- FOR DRAINAGE PROFILE SEE SHEET NO. 70.
- WATER AND SANITARY SERVICES, APPROX. LOCATIONS.
- THE GENERAL CONTRACTOR IS REQUIRED TO HIRE AN ENVIRONMENTAL FIRM WITH AT LEAST FIVE (5) DOCUMENTED LEAKING UNDERGROUND STORAGE TANK (LUST) CLEANUPS OR THAT IS PRE-QUALIFIED IN HAZARDOUS WASTE BY THE DEPARTMENT TO REMEDIATE THE SOIL CONTAMINATION AND MONITOR FOR WORKER PROTECTION.



EXISTING DRAINAGE & UTILITIES

26	29	33	36	39	42	45	48	51	53	55	56	57
STA. 80+56, 18'RT. MH TA 5'Ø TIF CL RIM 725.90 W INV. 717.98 E INV. 719.48 N INV. 719.78 S INV. 719.48	STA. 82+05, 32'RT. CB TA 4'Ø T24F&G RIM 729.18 N INV. 724.90	STA. 83+50, 32'LT. CB TA 4'Ø T24F&G RIM 730.75 *N.W. INV. 728.00 S INV. 725.75	STA. 84+28, 32'LT. CB TA 4'Ø T24F&G RIM 731.72 E INV. 727.48 S INV. 727.48	STA. 83+82, 19'RT. MH TA 5'Ø TIF OL RIM 731.32 E & W INV. 723.12 S INV. 725.70 N INV. 725.00	STA. 86+30, 32'RT. CB TA 4'Ø T24F&G RIM 735.84 NE INV. 730.84	STA. 86+22, 40'LT. CB TA 4'Ø TIF OL RIM 735.61 SW INV. 732.05 NE INV. (733.20)	STA. 88+15, 32'LT. CB TA 4'Ø T24F&G RIM 738.67 W INV. 732.76	STA. 90+90, 20'LT. MH TA 4'Ø TIF CL RIM 741.03 E INV. 736.50 NW INV. 737.25 NE INV. 737.00 N INV. (738.89)	STA. 92+67, 32'LT. CB TA 4'Ø T24F&G RIM 739.14 S INV. 734.14	STA. 92+85, 32'RT. CB TA 4'Ø T24F&G RIM 738.96 E INV. 733.96	STA. 93+66, 19'LT. MH TA 5'Ø TIF CL RIM 738.37 E & S INV. 731.64	STA. 93+66, 36'RT. MH TA 5'Ø TIF CL RIM 738.55 E & W INV. 731.48 N INV. 731.48



PROPOSED SEWER PLAN

24	27	30	34	37	40	43	46	49	52	54
NOT USED	STA. 80+60, 64'RT. CB TA 4'Ø TIF OL RIM 724.09 N & E INV. 719.91	STA. 82+05, 32' LT. CB TA 4'Ø T24F&G RIM 729.29 S INV. 724.29	(NOT USED)	STA. 84+28, 18'RT. MH TA 5'Ø TIF CL RIM 731.98 E INV. 724.39 W INV. 723.60 SE INV. 726.49 N INV. 727.00	STA. 84+28, 32'RT. CB TA 4'Ø T24F&G RIM 731.72 N INV. 726.72	STA. 86+15, 30'LT. MH TA 4'Ø TIF CL RIM 735.65 S & E INV. 731.90 NE INV. 731.90	STA. 86+97, 33.5'LT. CB TA 4'Ø TIF OL RIM 737.02 E & W INV. 732.24	STA. 89+15, 32'RT. CB TA 4'Ø TIF OL RIM 739.69 W INV. 734.69	STA. 91+06, 46.2'LT. CB TA 4'Ø T24F&G RIM 741.12 SW INV. 737.25 E INV. (738.00)	STA. 92+67, 19'LT. MH TA 4'Ø TIF CL RIM 739.34 E & W INV. 734.00 N INV. 734.00
25	28	31	35	38	41	44	47	50		
STA. 80+56, 32'LT. CB TA 4'Ø T24 F&G RIM 725.62 N INV. 722.00 S INV. 720.26	STA. 80+84, 64'RT. CB TY C TIF OL RIM 729.55 W INV. 720.15	STA. 82+05, 18'RT. MH TA 5'Ø TIF CL RIM 729.55 E & W INV. 721.20 N & S INV. 724.70	(NOT USED)	STA. 83+82, 32'RT. CB TA 4'Ø T24F&G RIM 731.05 W INV. 726.05	STA. 85+33, 32'LT. CB TA 4'Ø T24F&G RIM 733.83 W INV. 728.83	STA. 86+15, 18'RT. MH TA 5'Ø TIF CL RIM 735.90 W INV. 728.56 E INV. 730.75 N & SW INV. 730.75	STA. 87+52, 32'RT. CB TA 4'Ø T24F&G RIM 737.89 E & W INV. 732.89	STA. 90+44, 35.2'LT. CB TA 4'Ø TIF OL RIM 740.87 SE INV. 737.41		

ILLINOIS DEPARTMENT OF TRANSPORTATION

EXISTING AND PROPOSED DRAINAGE AND UTILITIES

STA. 79+00 TO STA. 94+00

ILLINOIS ROUTE 64

SCALE: 1" = 50'

DATE: OCTOBER 26, 2011

DRAWN BY B.K.

CHECKED BY S.J.P.

CHRISTIAN-ROGE & ASSOCIATES, INC.

ENGINEERS-PLANNERS-SURVEYORS

211 WEST WACKER DRIVE

CHICAGO, ILLINOIS 60606

1-312-372-2023 FAX: 1-312-372-5274

REVISIONS	
NAME	DATE

FILE NAME: r-r-65-1-102.dgn
 PLOT DATE: 10/26/2011
 PLOT SCALE: 50.00000 Ft. / IN.