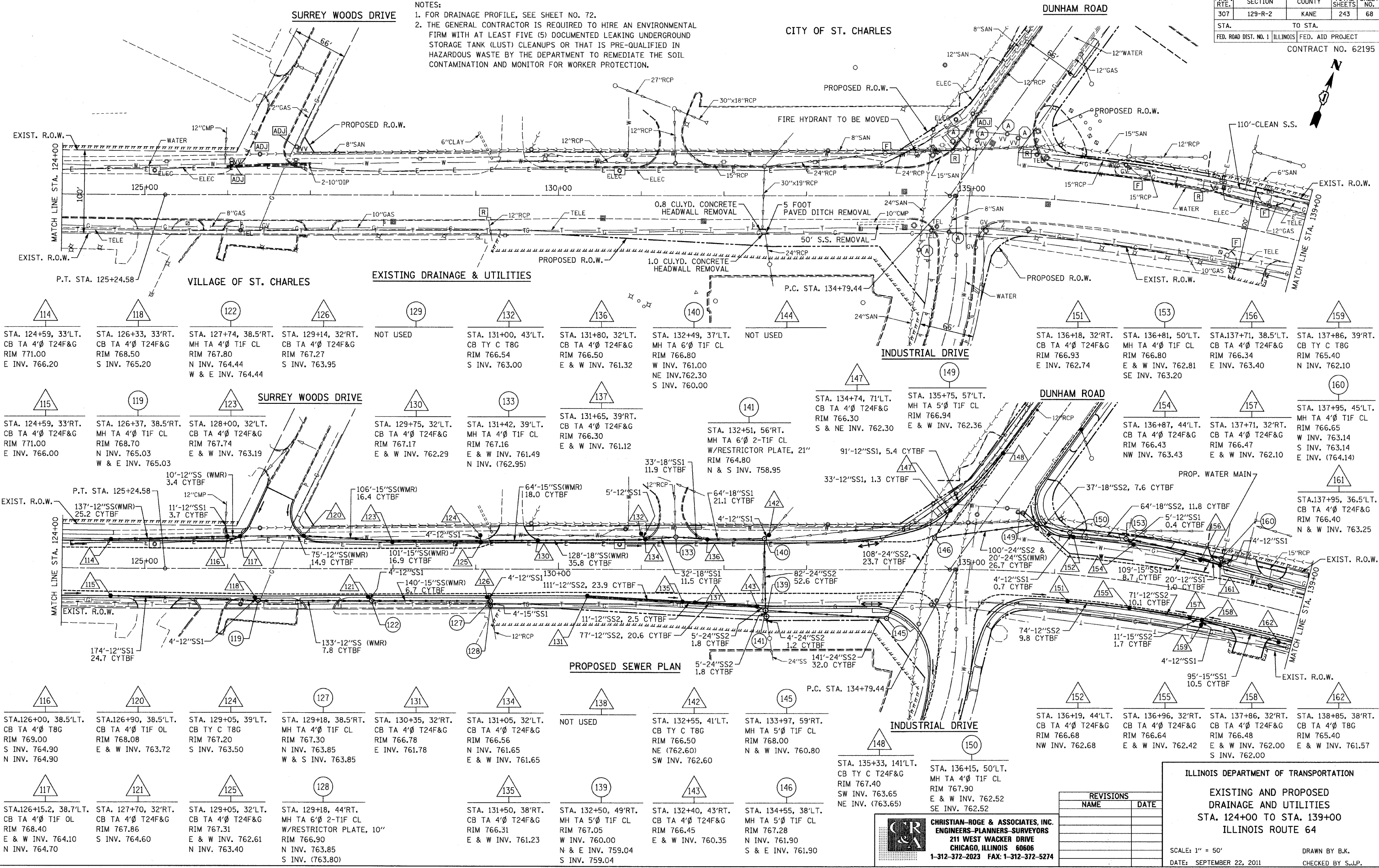


F.A.P. RTE.	SECTION	COUNTY	TOTAL SHEETS	SHEET NO.
307	129-R-2	KANE	243	68
STA. TO STA.		FED. ROAD DIST. NO. 1 ILLINOIS FED. AID PROJECT		
		CONTRACT NO. 62195		

NOTES:
 1. FOR DRAINAGE PROFILE, SEE SHEET NO. 72.
 2. THE GENERAL CONTRACTOR IS REQUIRED TO HIRE AN ENVIRONMENTAL FIRM WITH AT LEAST FIVE (5) DOCUMENTED LEAKING UNDERGROUND STORAGE TANK (LUST) CLEANUPS OR THAT IS PRE-QUALIFIED IN HAZARDOUS WASTE BY THE DEPARTMENT TO REMEDIATE THE SOIL CONTAMINATION AND MONITOR FOR WORKER PROTECTION.



114 STA. 124+59, 33'LT. CB TA 4'Ø T24F&G RIM 771.00 E INV. 766.20	118 STA. 126+33, 33'RT. MH TA 4'Ø T24F&G RIM 768.50 S INV. 765.20	122 STA. 127+74, 38.5'RT. MH TA 4'Ø T1F CL RIM 767.80 N INV. 764.44 W & E INV. 764.44	126 STA. 129+14, 32'RT. CB TA 4'Ø T24F&G RIM 767.27 S INV. 763.95	NOT USED	129 NOT USED	132 STA. 131+00, 43'LT. CB TY C T8G RIM 766.54 S INV. 763.00	136 STA. 131+80, 32'LT. CB TA 4'Ø T24F&G RIM 766.50 E & W INV. 761.32	140 STA. 132+49, 37'LT. MH TA 6'Ø T1F CL RIM 766.80 W INV. 761.00 NE INV. 762.30 S INV. 760.00	NOT USED	144 NOT USED	147 STA. 134+74, 71'LT. CB TA 4'Ø T24F&G RIM 766.30 S & NE INV. 762.30	149 STA. 135+75, 57'LT. MH TA 5'Ø T1F CL RIM 766.94 E & W INV. 762.36	151 STA. 136+18, 32'RT. CB TA 4'Ø T24F&G RIM 766.93 E INV. 762.74	153 STA. 136+81, 50'LT. MH TA 4'Ø T1F CL RIM 766.80 E & W INV. 762.81 SE INV. 763.20	156 STA. 137+71, 38.5'LT. CB TA 4'Ø T24F&G RIM 766.34 E INV. 763.40	159 STA. 137+86, 39'RT. CB TY C T8G RIM 765.40 N INV. 762.10	115 STA. 124+59, 33'RT. CB TA 4'Ø T24F&G RIM 771.00 E INV. 766.00	119 STA. 126+37, 38.5'RT. MH TA 4'Ø T1F CL RIM 768.70 N INV. 765.03 W & E INV. 765.03	123 STA. 128+00, 32'LT. CB TA 4'Ø T24F&G RIM 767.74 E & W INV. 763.19	130 STA. 129+75, 32'LT. CB TA 4'Ø T24F&G RIM 767.17 E & W INV. 762.29	133 STA. 131+42, 39'LT. MH TA 4'Ø T1F CL RIM 767.16 E & W INV. 761.49 N INV. (762.95)	137 STA. 131+65, 39'RT. CB TA 4'Ø T24F&G RIM 766.30 E & W INV. 761.12	141 STA. 132+51, 56'RT. MH TA 6'Ø 2-T1F CL W/RESTRICTOR PLATE, 21" RIM 764.80 N & S INV. 758.95	142 STA. 137+95, 45'LT. MH TA 4'Ø T1F CL RIM 766.65 W INV. 763.14 S INV. 763.14 E INV. (764.14)	146 STA. 137+95, 36.5'LT. CB TA 4'Ø T24F&G RIM 766.40 N & W INV. 763.25	116 STA. 126+00, 38.5'LT. CB TA 4'Ø T8G RIM 769.00 S INV. 764.90 N INV. 764.90	120 STA. 126+90, 38.5'LT. CB TA 4'Ø T1F OL RIM 768.08 E & W INV. 763.72	124 STA. 129+05, 39'LT. CB TY C T8G RIM 767.20 S INV. 763.50	127 STA. 129+18, 38.5'RT. MH TA 4'Ø T1F CL RIM 767.30 N INV. 763.85 W & S INV. 763.85	131 STA. 130+35, 32'RT. CB TA 4'Ø T24F&G RIM 766.78 E INV. 761.78	134 STA. 131+05, 32'LT. CB TA 4'Ø T24F&G RIM 766.56 N INV. 761.65 E & W INV. 761.65	NOT USED	142 STA. 132+55, 41'LT. CB TY C T8G RIM 766.50 NE (762.60) SW INV. 762.60	145 STA. 133+97, 59'RT. MH TA 5'Ø T1F CL RIM 768.00 N & W INV. 760.80	148 STA. 135+33, 141'LT. CB TY C T24F&G RIM 767.40 SW INV. 763.65 NE INV. (763.65)	150 STA. 136+15, 50'LT. MH TA 4'Ø T1F CL RIM 767.90 E & W INV. 762.52 SE INV. 762.52	152 STA. 136+19, 44'LT. CB TA 4'Ø T24F&G RIM 766.68 NW INV. 762.68	155 STA. 136+96, 32'RT. CB TA 4'Ø T24F&G RIM 766.64 E & W INV. 762.42	158 STA. 137+86, 32'RT. CB TA 4'Ø T24F&G RIM 766.48 E & W INV. 762.00 S INV. 762.00	162 STA. 138+85, 38'RT. CB TA 4'Ø T8G RIM 765.40 E & W INV. 761.57
---	---	--	---	----------	-----------------	--	---	--	----------	-----------------	--	---	---	---	---	--	---	--	---	---	--	---	--	---	---	---	---	--	--	---	--	----------	--	---	---	---	--	---	--	--

FILE NAME = P:\62195\118.dgn
 PLOT DATE = 9/23/2011
 PLOT SCALE = 1/8" = 1' / IN.

CHRISTIAN-ROGE & ASSOCIATES, INC.
 ENGINEERS-PLANNERS-SURVEYORS
 211 WEST WACKER DRIVE
 CHICAGO, ILLINOIS 60606
 1-312-372-2023 FAX: 1-312-372-5274

REVISIONS	
NAME	DATE

ILLINOIS DEPARTMENT OF TRANSPORTATION
 EXISTING AND PROPOSED
 DRAINAGE AND UTILITIES
 STA. 124+00 TO STA. 139+00
 ILLINOIS ROUTE 64

SCALE: 1" = 50'
 DATE: SEPTEMBER 22, 2011
 DRAWN BY B.K.
 CHECKED BY S.J.P.