

F.A.P. NO.	SECTION	COUNTY	TOTAL SHEETS	SHEET NO.
307	129-R-2	KANE	243	77
STA.	TO STA.			
FED. ROAD DIST. NO. 1	ILLINOIS	FED. AID PROJECT		

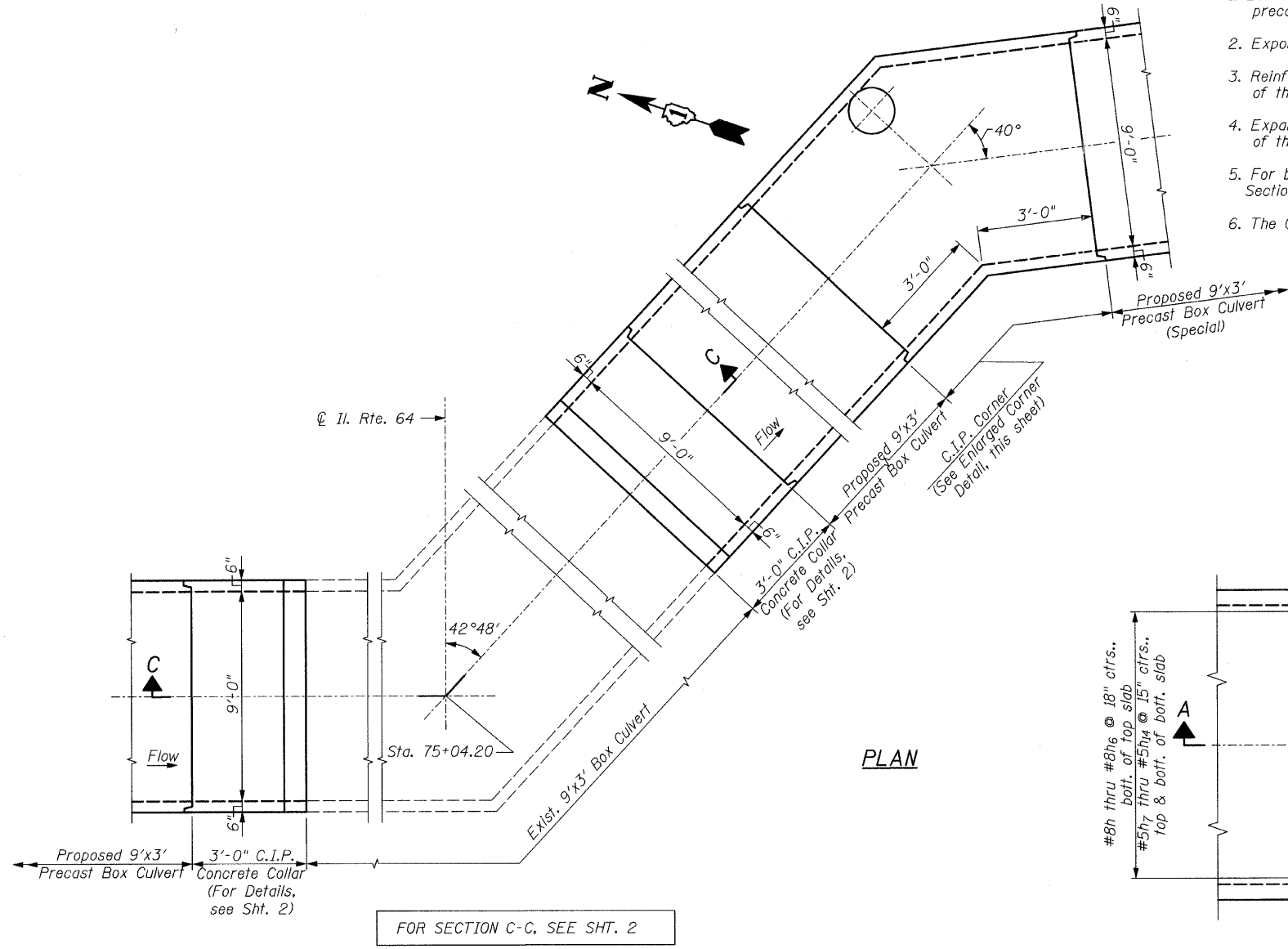
CONTRACT NO. 62195

BILL OF MATERIAL
(1 EXTENSION)

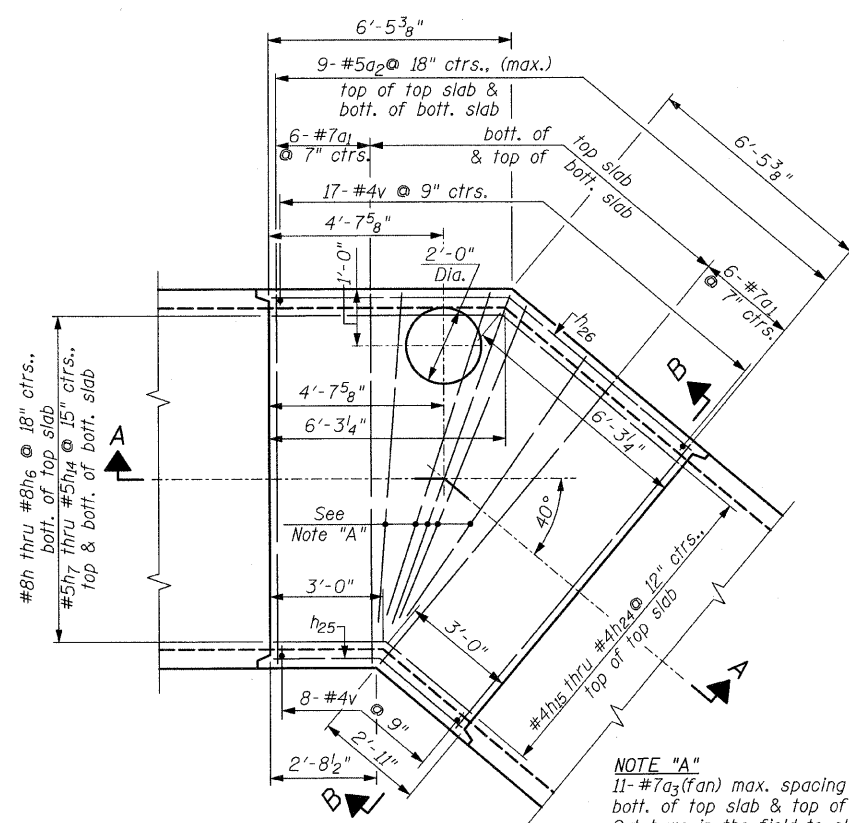
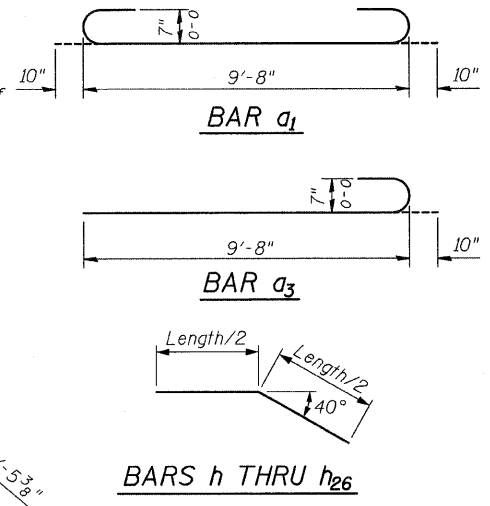
Bar	No.	Size	Length	Shape
a ₁	24	#7	11'-4"	U
a ₂	18	#5	9'-8"	U
a ₃	22	#7	10'-6"	U
h	1	#8	5'-8"	
h ₁	1	#8	6'-8"	
h ₂	1	#8	7'-10"	
h ₃	1	#8	8'-10"	
h ₄	1	#8	10'-0"	
h ₅	1	#8	11'-0"	
h ₆	1	#8	12'-2"	
h ₇	2	#5	5'-8"	
h ₈	2	#5	6'-8"	
h ₉	2	#5	7'-6"	
h ₁₀	2	#5	8'-6"	
h ₁₁	2	#5	9'-4"	
h ₁₂	2	#5	10'-4"	
h ₁₃	2	#5	11'-2"	
h ₁₄	2	#5	12'-2"	
h ₁₅	1	#4	5'-8"	
h ₁₆	1	#4	6'-4"	
h ₁₇	1	#4	7'-0"	
h ₁₈	1	#4	7'-10"	
h ₁₉	1	#4	8'-6"	
h ₂₀	1	#4	9'-2"	
h ₂₁	1	#4	10'-0"	
h ₂₂	1	#4	10'-8"	
h ₂₃	1	#4	11'-6"	
h ₂₄	1	#4	12'-2"	
h ₂₅	3	#5	5'-4"	
h ₂₆	3	#5	12'-2"	
v	25	#4	4'-3"	
Concrete Box Culverts			Cu. Yds.	6.4
Reinforcement Bars			Lbs.	1,730

GENERAL NOTES

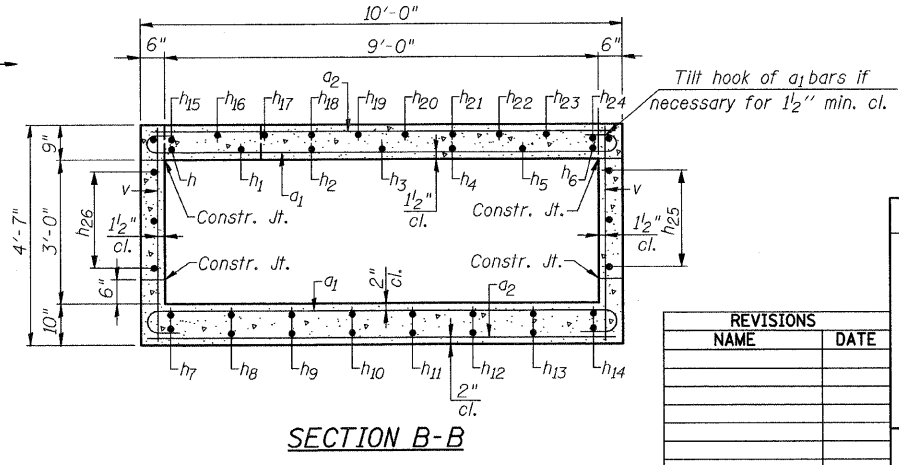
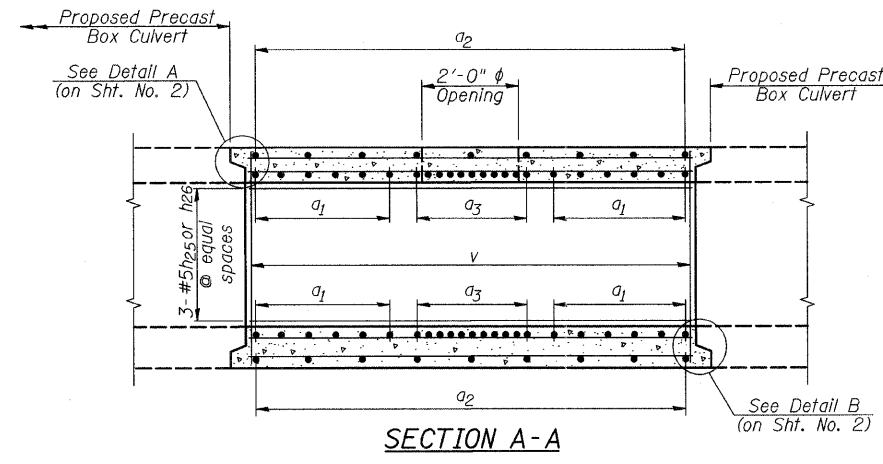
- Bell and Spigot ends may be cast in place against the precast section or may be formed to match the precast section.
- Exposed edges shall be beveled $\frac{3}{4}$ ".
- Reinforcement Bars shall be in accordance with Section 508 of the Standard Specifications.
- Expansion Bolts shall be in accordance with Section 706.09 of the Standard Specifications.
- For backfilling and embankment see the applicable portions of Section 542 of the Standard Specifications.
- The Cast-In-Place Extension shall be of Class SI Concrete.



FOR SECTION C-C, SEE SHT. 2



NOTE "A"
11-#7a₃(ran) max. spacing is 7"
bott. of top slab & top of bott. slab.
Cut bars in the field to clear the 2'-0" dia. opening in the top slab.



DESIGN STRESSES
f_y = 60,000 psi
f'_c = 3,500 psi
LOADING
HS 20-44 & Alt.

SHEET 1 OF 2

ILLINOIS DEPARTMENT OF TRANSPORTATION

CAST-IN-PLACE
9'x3' BOX CULVERT
EXTENSION DETAILS
STATION 75+04.20
KANE COUNTY

REVISIONS	
NAME	DATE

SCALE: 1/2"=1'-0"
DATE: AUGUST 10, 2011
DRAWN BY: F.M.
CHECKED BY: B.N.S.

CHRISTIAN-ROGE & ASSOC., INC.
CHICAGO ILLINOIS

FILE NAME = r6e64 culvert2.dgn
PLOT DATE = 9/12/2011
PLOT SCALE = 3/32" = 1" / IN.