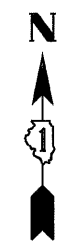
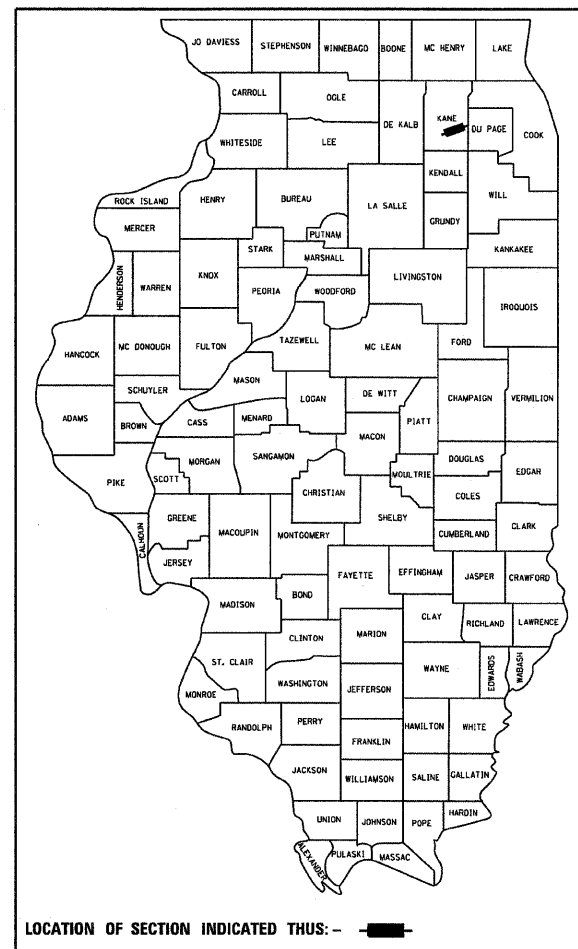


F.A. RTE.	SECTION	COUNTY	TOTAL SHEETS	SHEET NO.
307	128R-3	KANE	29	1
FED. ROAD DIST. NO.		ILLINOIS	CONTRACT NO.	

Sheet No. 81

STATE OF ILLINOIS DEPARTMENT OF TRANSPORTATION PLAT OF HIGHWAYS FOR PROPOSED FEDERAL AID HIGHWAY

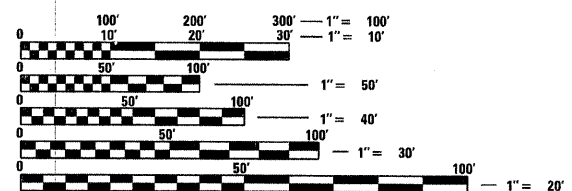
ROUTE: FAP 307 IL 64
SECTION: 128R-3
JOB NO.: R91-042-01
COUNTY: KANE
LIMITS:



RUETTIGER, TONELLI & ASSOCIATES, INC.
Land Surveyors/Engineers/Planners/Landscape Architects/G.I.S. Consultants
2174 ONEIDA STREET
JOLIET, ILLINOIS 60435
PH. (815) 744-6600 FAX (815) 744-0101

APPROVED _____	20 _____
LOCAL AGENCY OFFICIAL	
APPROVED _____	20 _____
ENGINEER OF LAND ACQUISITION	
APPROVED _____	20 _____
ENGINEER OF LOCAL ROADS & STREETS	
APPROVED _____	20 _____
DISTRICT ENGINEER	
STATE OF ILLINOIS DEPARTMENT OF TRANSPORTATION	

**PRINTED BY THE AUTHORITY
OF THE STATE OF ILLINOIS**



FULL SIZE PLANS HAVE BEEN PREPARED USING STANDARD ENGINEERING SCALES. REDUCED SIZED PLANS WILL NOT CONFORM TO STANDARD SCALES. IN MAKING MEASUREMENTS ON REDUCED PLANS, THE ABOVE SCALES MAY BE USED.

J.U.L.I.E.
JOINT UTILITY LOCATION INFORMATION FOR EXCAVATION
1-800-892-0123
OR 811

**PROJECT ENGINEER
PROJECT MANAGER**

CONTRACT NO.

PROJECT LENGTH = 6349.69 L.F. = 1.203 MILES

