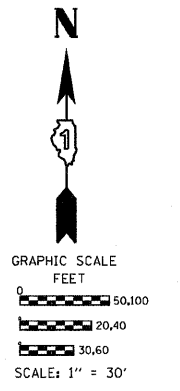
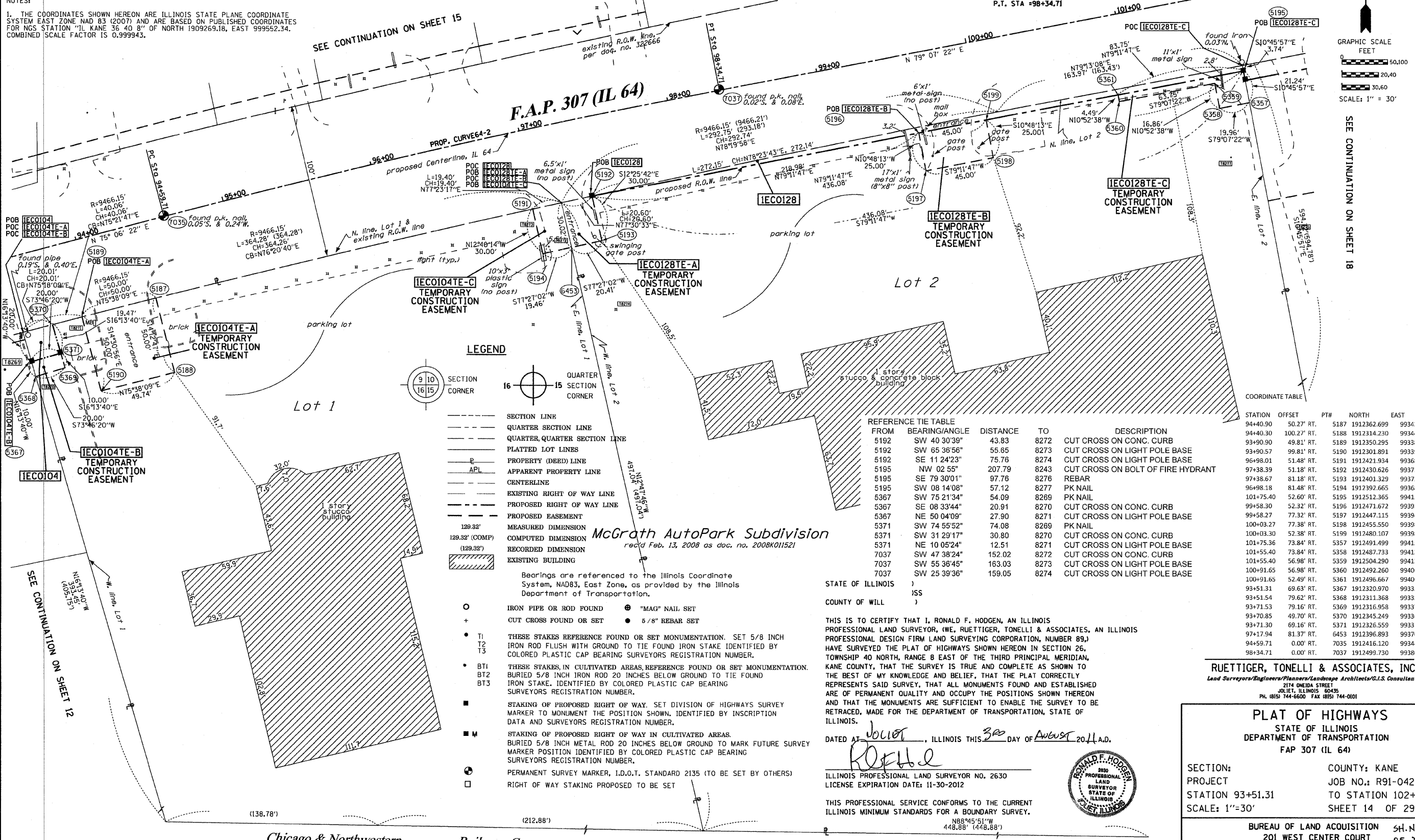


PART OF THE SW 14 OF SECTION 26, TWP. 40 N., R. 8 E. OF THE 3RD. P.M., IN KANE COUNTY, ILLINOIS.

PARCEL NUMBER	OWNER	TOTAL HOLDINGS ACRES	PART TAKEN ACRES	AREA IN EXISTING R.O.W. ACRES	REMAINDER AREA ACRES	EASEMENT AREA ACRES	EASEMENT AREA SQUARE FEET	EASEMENT PURPOSE	PERMANENT INDEX NUMBER	PROPERTY ACQUIRED BY
IECO104	GARY D. MCGRATH, TRUSTEE OF GARY D. MCGRATH TRUST NO. 1	3.647	0.009 395 s.f.	N/A	3.638	A-0.057 B-0.005 C-0.013	N/A	CONST	09-26-302-011	
IECO128	F.D.W. REAL ESTATE, INC.	5.616	0.030	N/A	5.586	A-0.014 B-0.026 C-0.016	N/A	CONST	09-26-302-012	

NOTES:
1. THE COORDINATES SHOWN HEREON ARE ILLINOIS STATE PLANE COORDINATE SYSTEM EAST ZONE NAD 83 (2007) AND ARE BASED ON PUBLISHED COORDINATES FOR NGS STATION "IL KANE 36 40 8" OF NORTH 1909269.18, EAST 999552.34, COMBINED SCALE FACTOR IS 0.999943.

PROP. CURVE64-2
PI STA. = 96+47.29
Δ = 4° 01' 00" (RT)
D = 1" 04' 16"
R = 5,349.19'
L = 187.58'
T = 375.00'
E = 3.29'
θ = -----
T.R. = -----
S.E. RUN = -----
P.C. STA = 94+59.71
P.T. STA = 98+34.71



McGrath AutoPark Subdivision
rec'd Feb. 13, 2008 as doc. no. 2008K011521

Bearings are referenced to the Illinois Coordinate System, NAD83, East Zone, as provided by the Illinois Department of Transportation.

STATE OF ILLINOIS)
COUNTY OF WILL)

THIS IS TO CERTIFY THAT I, RONALD F. HODGEN, AN ILLINOIS PROFESSIONAL LAND SURVEYOR, (WE, RUETTIGER, TONELLI & ASSOCIATES, AN ILLINOIS PROFESSIONAL DESIGN FIRM LAND SURVEYING CORPORATION, NUMBER 89,) HAVE SURVEYED THE PLAT OF HIGHWAYS SHOWN HEREON IN SECTION 26, TOWNSHIP 40 NORTH, RANGE 8 EAST OF THE THIRD PRINCIPAL MERIDIAN, KANE COUNTY, THAT THE SURVEY IS TRUE AND COMPLETE AS SHOWN TO THE BEST OF MY KNOWLEDGE AND BELIEF, THAT THE PLAT CORRECTLY REPRESENTS SAID SURVEY, THAT ALL MONUMENTS FOUND AND ESTABLISHED ARE OF PERMANENT QUALITY AND OCCUPY THE POSITIONS SHOWN THEREON AND THAT THE MONUMENTS ARE SUFFICIENT TO ENABLE THE SURVEY TO BE RETRACED, MADE FOR THE DEPARTMENT OF TRANSPORTATION, STATE OF ILLINOIS.

DATED AT JOLIET, ILLINOIS THIS 3rd DAY OF August 2011 A.D.

ILLINOIS PROFESSIONAL LAND SURVEYOR NO. 2630
LICENSE EXPIRATION DATE: 11-30-2012



THIS PROFESSIONAL SERVICE CONFORMS TO THE CURRENT ILLINOIS MINIMUM STANDARDS FOR A BOUNDARY SURVEY.

RUETTIGER, TONELLI & ASSOCIATES, INC.
Land Surveyors/Engineers/Planners/Landscape Architects/G.I.S. Consultants
214 ONEDA STREET
JOLIET, ILLINOIS 60435
PH. (815) 744-6600 FAX (815) 744-0101

PLAT OF HIGHWAYS
STATE OF ILLINOIS
DEPARTMENT OF TRANSPORTATION
FAP 307 (IL 64)

SECTION: COUNTY: KANE
PROJECT: JOB NO.: R91-042-01
STATION 93+51.31 TO STATION 102+00
SCALE: 1"=30' SHEET 14 OF 29

BUREAU OF LAND ACQUISITION SH. No. 94
201 WEST CENTER COURT OF 243
SCHAUMBURG, ILLINOIS 60196