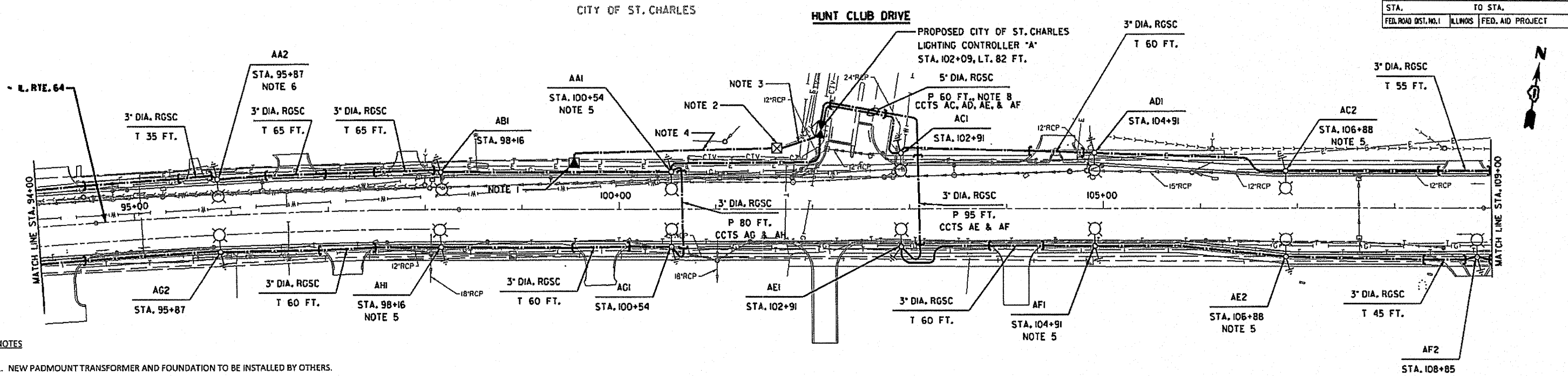
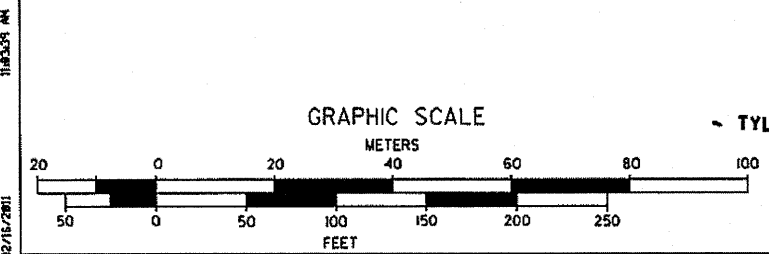
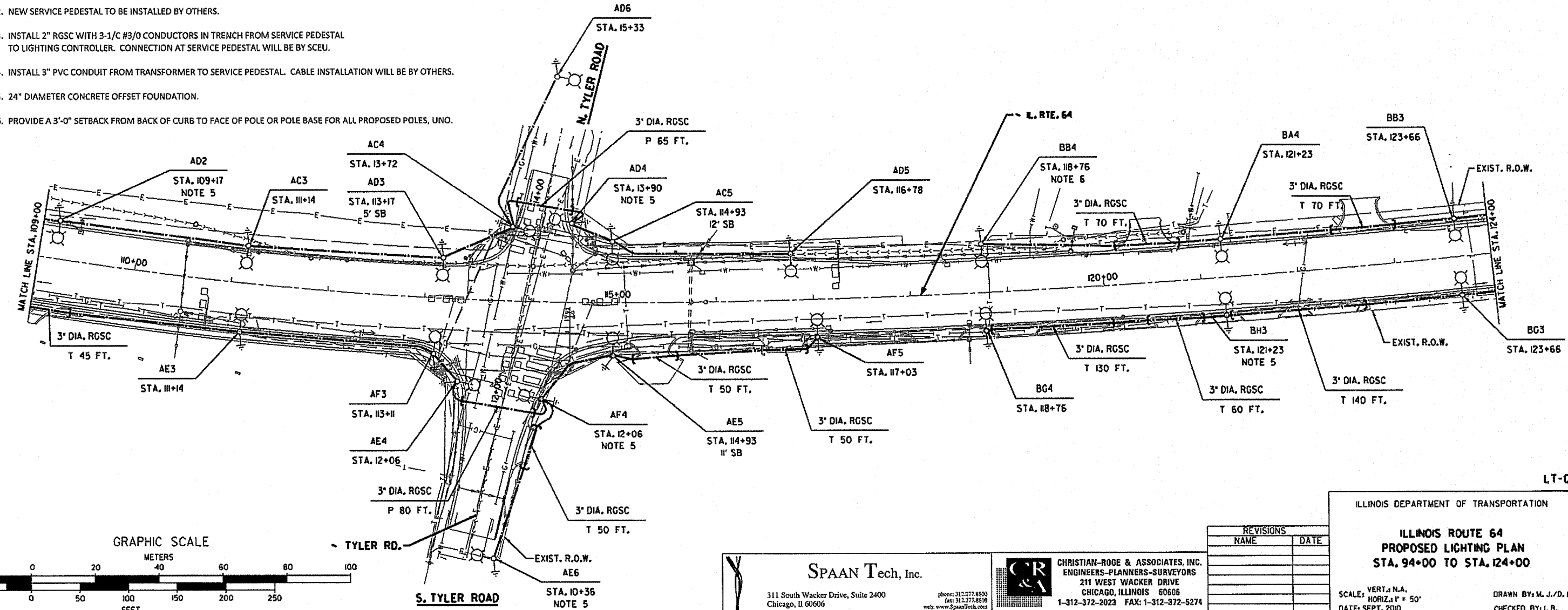


F.A.P. RTE.	SECTION	COUNTY	TOTAL SHEETS	SHEET NO.
307	I29 R-2	KANE	243	148
STA.		TO STA.		
FED. ROAD DIST. NO. 1		ILLINOIS	FED. AID PROJECT	



- NOTES**
1. NEW PADMOUNT TRANSFORMER AND FOUNDATION TO BE INSTALLED BY OTHERS.
 2. NEW SERVICE PEDESTAL TO BE INSTALLED BY OTHERS.
 3. INSTALL 2" RGSC WITH 3-1/C #3/0 CONDUCTORS IN TRENCH FROM SERVICE PEDESTAL TO LIGHTING CONTROLLER. CONNECTION AT SERVICE PEDESTAL WILL BE BY SCEU.
 4. INSTALL 3" PVC CONDUIT FROM TRANSFORMER TO SERVICE PEDESTAL. CABLE INSTALLATION WILL BE BY OTHERS.
 5. 24" DIAMETER CONCRETE OFFSET FOUNDATION.
 6. PROVIDE A 3'-0" SETBACK FROM BACK OF CURB TO FACE OF POLE OR POLE BASE FOR ALL PROPOSED POLES, UNO.



SPAAN Tech, Inc.
 311 South Wacker Drive, Suite 2400
 Chicago, IL 60606
 Phone: 312-277-8800
 Fax: 312-277-8808
 Web: www.SpaanTech.com

CHRISTIAN-ROGE & ASSOCIATES, INC.
 ENGINEERS-PLANNERS-SURVEYORS
 211 WEST WACKER DRIVE
 CHICAGO, ILLINOIS 60606
 1-312-372-2023 FAX: 1-312-372-5274

REVISIONS	
NAME	DATE

ILLINOIS DEPARTMENT OF TRANSPORTATION

**ILLINOIS ROUTE 64
 PROPOSED LIGHTING PLAN
 STA. 94+00 TO STA. 124+00**

SCALE: VERT. 1"=4' N.A.
 HORIZ. 1"= 50'
 DATE: SEPT, 2010

DRAWN BY: M. J./D. L.
 CHECKED BY: L. B.