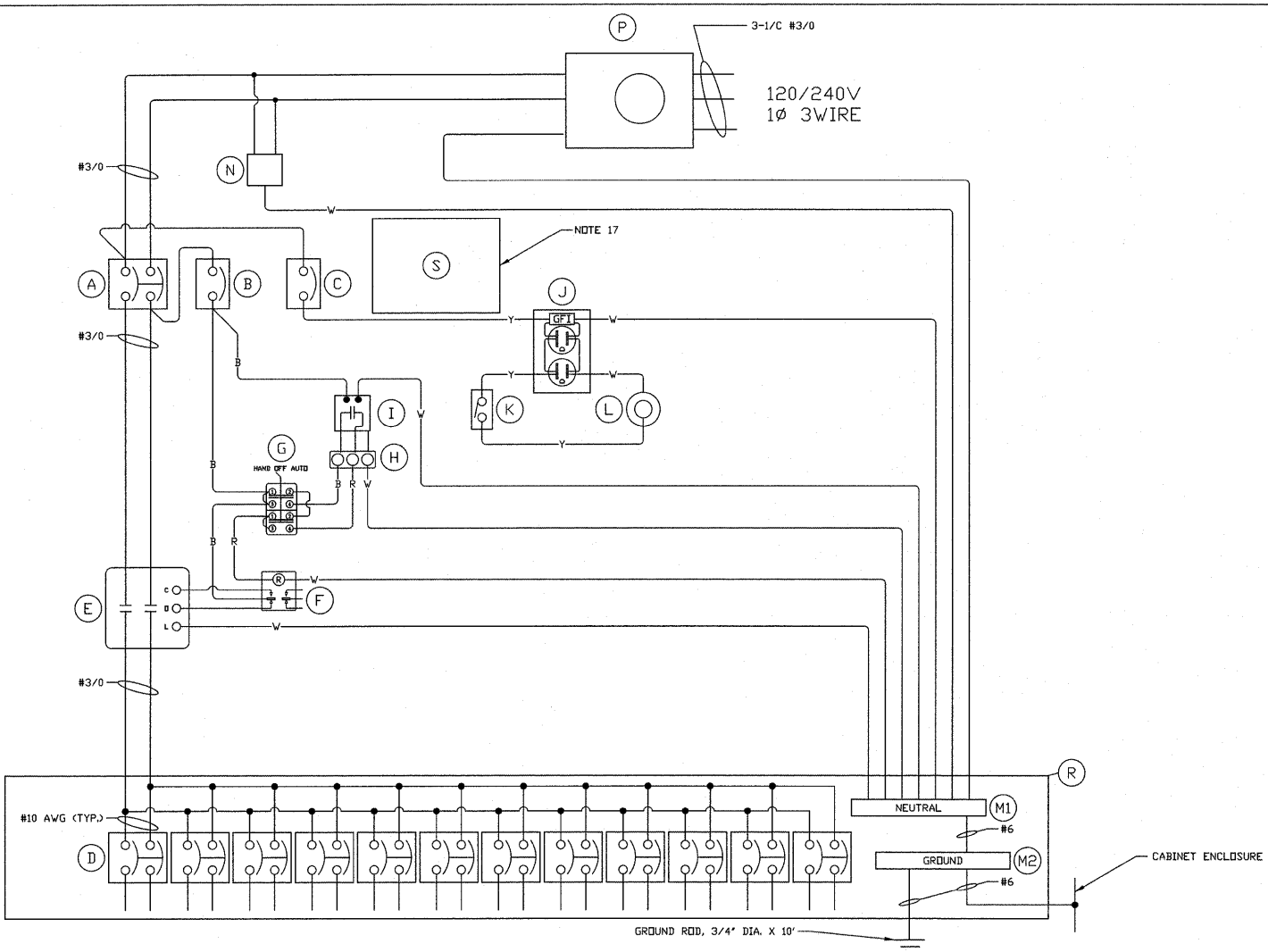


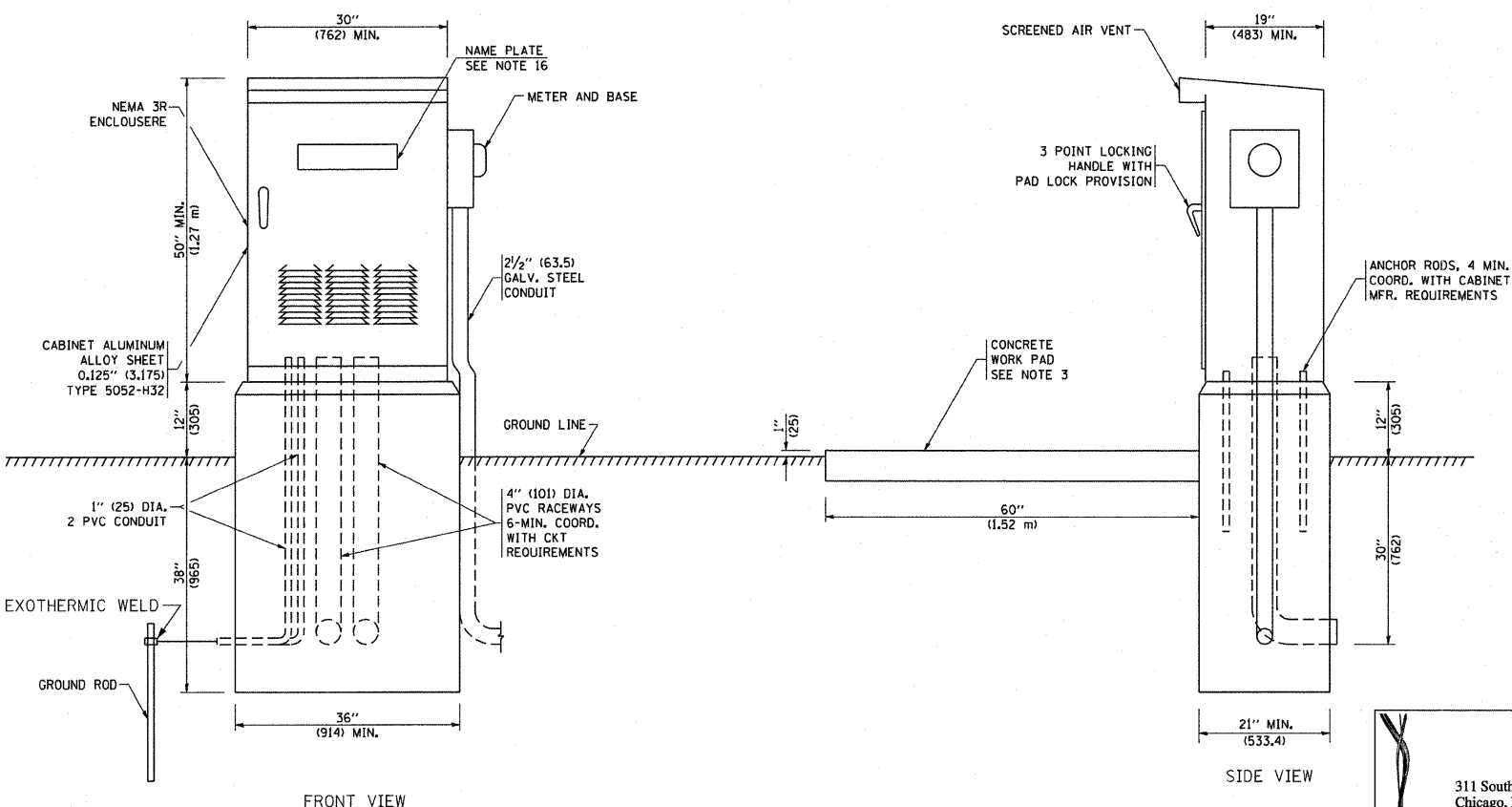
F.A.P. RTE.	SECTION	COUNTY	TOTAL SHEETS	SHEET NO.
307	129 R-2	KANE	243	154
STA.		TO STA.		
FED. ROAD DIST. NO. 1		ILLINOIS FED. AID PROJECT		



DEVICE SCHEDULE		
ITEM	QTY.	DESCRIPTION
(A)	1	CIRCUIT BREAKER, MOLDED CASE, THERMAL MAGNETIC, 2-POLE, 240V A.C., 225A FRAME, 200A NON-INTERCHANGABLE TRIP, BOLT-ON TYPE, INTERRUPTING CAPACITY OF NOT LESS THAN 22,000 RMS SYMMETRICAL AMPERES AT 240V.
(B)	1	CONTROL BREAKER, MOLDED CASE, THERMAL MAGNETIC, 1-POLE, 120V, A.C., BOLT-ON TYPE, 15A, WITH AN INTERRUPTING CAPACITY OF NOT LESS THAN 22,000 RMS SYMMETRICAL AMPERES AT 240V.
(C)	1	AUXILIARY BREAKER, MOLDED CASE, THERMAL MAGNETIC, 1-POLE, 120V A.C., BOLT-ON TYPE, 205A, WITH AN INTERRUPTING CAPACITY OF NOT LESS THAN 22,000 RMS SYMMETRICAL AMPERES AT 240V.
(D)	12	BRANCH BREAKERS, 2-POLE, 240V A.C., 20A, BOLT-ON TYPE, INTERRUPTING CAPACITY OF NOT LESS THAN 22,000 RMS SYMMETRICAL AMPERES AT 240V.
(E)	1	LIGHTING CONTACTOR, MECHANICALLY HELD, MOUNTED ON SUB PANEL, 200A., 2-POLE, 240V, WITH 120V COIL. ASCO 920 OR APPROVED EQUIVALENT.
(F)	1	COIL RELAY, 25A CONTACT RATING, 120V, MAGNECRAFT W389ACX-9 OR APPROVED EQUIVALENT.
(G)	1	HAND-OFF-AUTO CONTROL SWITCH, SQUARE D 9001KYK111 OR APPROVED EQUIVALENT.
(H)	1	TERMINAL BLOCK, 3-POLE, CINCH OR EQUIVALENT.
(I)	1	TIME CLOCK, 240V, 60 HZ, MICROPROCESSOR BASED 2-CHANNEL CONTROLLER WITH ASTRONOMIC FUNCTIONS. RATED FOR -30 DEGREES C. TO +70 DEGREES C.
(J)	1	GFI RECEPTACLE, 120V 20A, PREMIUM SPEC. GRADE, NEMA REFERENCE 5-15R, IN WEATHER-PROOF BOX WITH FLAP-TYPE COVER.
(K)	1	DOOR SWITCH, 120V 20A, 1-POLE
(L)	1	LIGHT FIXTURE, 60 WATT INCANDESCENT, VAPOR TIGHT, WITH GLOBE AND GUARD AND MOUNTING BOX.
(M1)	1	NEUTRAL BUS
(M2)	1	GROUND BUS
(N)	1	SURGE SUPPRESSOR, SQUARE D SDSA1175 OR APPROVED EQUIVALENT.
(O)		NOT USED
(P)	1	METER FITTING, MILBANK UB949
(R)	1	PANELBOARD, INTERIOR ONLY, 120/240V, 1-PHASE, WITH 200A COPPER MAINS AND 12-2P 20A BOLT-ON BRANCH BREAKERS EACH RATED 240V. WITH INTERRUPTING CAPACITY OF NOT LESS THAN 22,000A SYMMETRICAL AT 240V.
(S)	1	RED NAMEPLATE WITH WHITE LETTERS ENGRAVED "LIVE CIRCUITS EVEN WHEN MAIN CIRCUIT BREAKER IS IN OFF POSITION".

NOTES:

- ALL POWER WIRING SHALL BE RHH/RHW
- ALL CONTROL WIRING SHALL BE #12 AWG MTW
- WIRE COLORS:
BL = BLUE
W = WHITE
B = BLACK
R = RED
Y = YELLOW
- ALL CONDUCTORS SHALL BE COPPER.



- NOTES:**
- ALL DIMENSIONS ARE IN INCHES (MILLIMETERS) UNLESS OTHERWISE SHOWN.
 - FOUNDATION SIZE SHALL BE COORDINATED WITH CABINET SIZE AND MFR.
 - IN FRONT OF CONTROL CABINET DOOR, REMOVE VEGETATION AND 2" (50.8 mm) TOP SOIL, LEVEL THE AREA AND ON TOP, PLACE LENGTH WISE PARALLEL TO CONTROL CABINET, A CONCRETE PAD 36" (914.4 mm) x 60" (1524 mm) x 4" (101 mm) MIN. SIZE. THE COST OF LABOR AND MATERIALS ARE INCLUDED IN THE COST OF THE CONTROLLER.
 - DOOR SHALL BE CONSTRUCTED FROM SAME TYPE OF MATERIAL AND THICKNESS AS CABINET.
 - DOOR SHALL BE EQUIPPED WITH THREE POINT LATCHING MECHANISM WITH NYLON ROLLERS AT TOP THE BOTTOM.
 - DOOR HINGE SHALL BE A HEAVY GAUGE CONTINUOUS HINGE WITH A 1/4" (6.35 mm) DIA. STAINLESS STEEL HINGE PIN.
 - ALL EXTERNAL HARDWARE SHALL BE STAINLESS STEEL.
 - NOT USED
 - METER BOX SHALL BE MOUNTED ON THE SIDE OF CONTROL CABINET, NEAR TO THE SERVICE POLE.
 - CABINETS SHALL BE PRIMED AND PAINTED AS SPECIFIED.
 - THE HEADS OF CONNECTORS SCREWS SHALL BE PAINTED WHITE FOR NEUTRAL BAR CONNECTION AND GREEN FOR GROUND BAR CONNECTORS.
 - THE CONTROLLER SHALL BE SUITABLE FOR USE AS SERVICE ENTRANCE EQUIPMENT.
 - PROVIDE SEALING GROMMETS FOR ALL OPEN WIRING EXTENDED FROM DEVICES IN BOXES OR CABINETS WITHIN THE CONTROL CABINET.
 - ALL WIRING SHALL BE NEATLY DRESSED AND SUPPORTED.
 - THE CONTROLLER SHALL BE CONSTRUCTED TO U.L. STD. 508 AND BEAR THE U.L. LABEL "ENCLOSED INDUSTRIAL CONTROL PANEL".
 - 12" (304.8) X 16" (406.4) STAINLESS STEEL EXTERIOR NAMEPLATE SHALL BE ENGRAVED TO "CITY OF ST. CHARLES LIGHTING CONTROLS" UNLESS OTHERWISE SPECIFIED.
 - LOCATE NAMEPLATE NEAR MAIN BREAKER.

LT-10

ILLINOIS DEPARTMENT OF TRANSPORTATION

**ILLINOIS ROUTE 64
LIGHTING CONTROLLER**

SCALE: NONE
DATE: SEPT. 2010

DRAWN BY: M. J./D. L.
CHECKED BY: I. B.

REVISIONS	
NAME	DATE

SPAN Tech, Inc.
311 South Wacker Drive, Suite 2400
Chicago, IL 60606
phone: 312.277.8800
fax: 312.277.8808
web: www.SpanTech.com

CHRISTIAN-ROGE & ASSOCIATES, INC.
ENGINEERS-PLANNERS-SURVEYORS
211 WEST WACKER DRIVE
CHICAGO, ILLINOIS 60606
1-312-372-2023 FAX: 1-312-372-5274