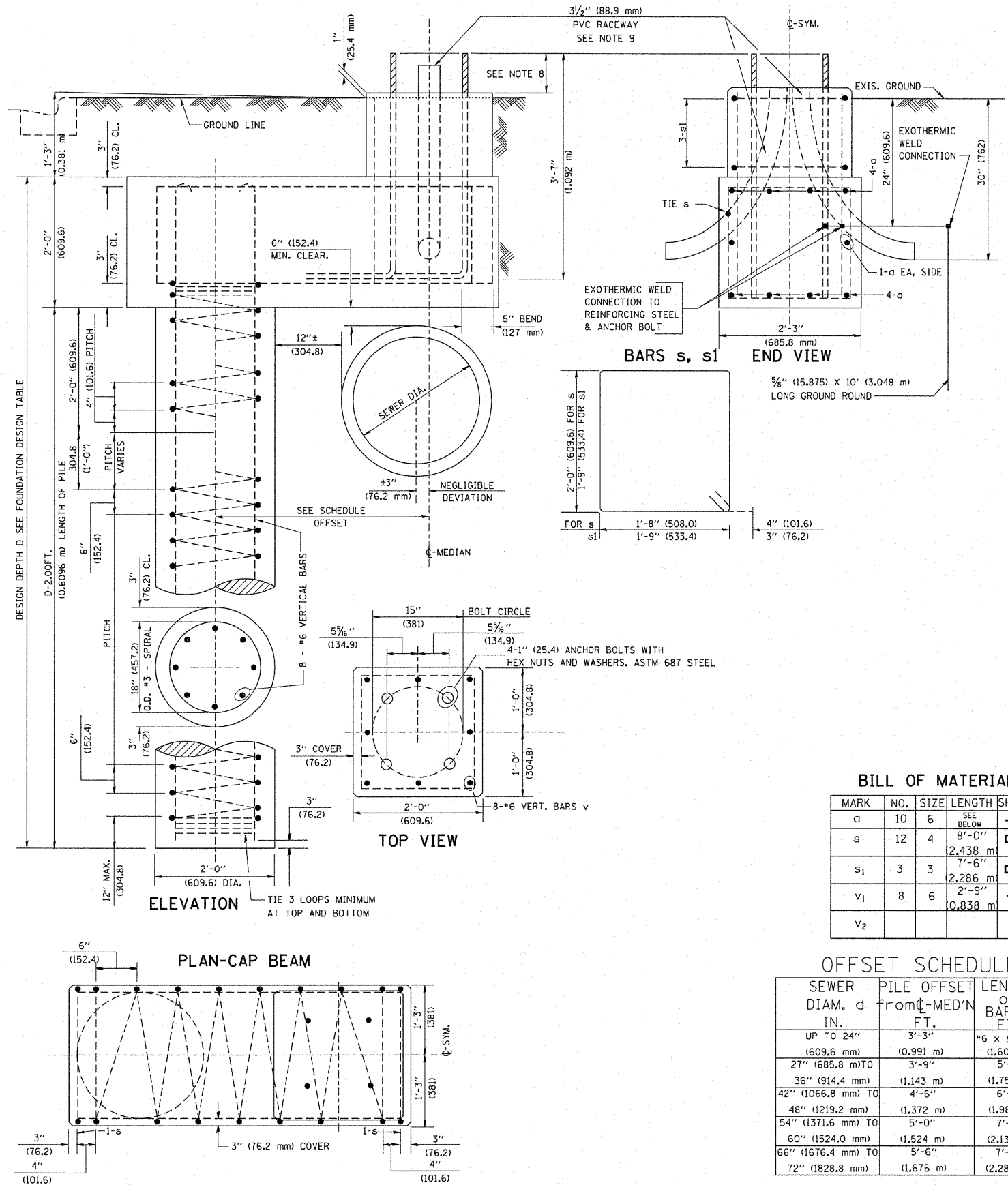


FOUNDATION DESIGN TABLE

TYPE OF SOIL	DESIGN DEPTH OF FOUNDATION		REINFORCEMENT IN FOUNDATION			
	SINGLE ARM D	TWIN ARM D	SINGLE ARM		TWIN ARM	
			VERT BARS	SPIRAL	VERT BARS	SPIRAL
SOFT CLAY	13'-0" (3,962 m)	15'-0" (4,572 m)	8-#6X12'-6" (3,810 m)	#3X122' (37,186 m)	8-#6X14'-3" (4,343 m)	#3X141' (42,977 m)
MEDIUM CLAY	9'-6" (2,896 m)	10'-9" (3,277 m)	8-#6X9'-0" (2,743 m)	#3X90' (27,432 m)	8-#6X10'-0" (3,048 m)	#3X100' (30,480 m)
STIFF CLAY	7'-0" (2,134 m)	8'-0" (2,438 m)	8-#6X6'-6" (1,981 m)	#3X66' (20,112 m)	8-#6X7'-6" (2,286 m)	#3X76' (23,165 m)
LOOSE SAND	9'-0" (2,743 m)	10'-0" (3,048 m)	8-#6X8'-6" (2,591 m)	#3X85' (25,908 m)	8-#6X9'-6" (2,896 m)	#3X94' (28,651 m)
MEDIUM SAND	8'-3" (2,515 m)	9'-0" (2,743 m)	8-#6X8'-0" (2,438 m)	#3X78' (23,774 m)	8-#6X8'-6" (2,591 m)	#3X85' (25,908 m)
DENSE SAND	7'-9" (2,362 m)	9'-0" (2,743 m)	8-#6X7'-6" (2,286 m)	#3X73' (22,250 m)	8-#6X8'-6" (2,591 m)	#3X85' (25,908 m)
ROCK OR SOLIDIFIED SLAG	5'-0" (1,524 m)	5'-0" (1,524 m)	NONE	NONE	NONE	NONE

NOTES

- ALL DIMENSIONS ARE IN INCHES (MILLIMETERS) UNLESS OTHERWISE SHOWN.
- THE ENGINEER SHALL DETERMINE THE CLASS OF SOIL DURING EXCAVATION AND SELECT THE DESIGN DEPTH OF FOUNDATION FROM THE DESIGN TABLE.
- EXCAVATION OF THE POLE FOUNDATION SHALL BE MADE WITH AN AUGER, 24" (609.6 mm) OR 30" (762.0 mm) IN DIAMETER.
- THE ANCHOR ROD SHALL BE A HOOK ROD TYPE. COLD BENDING OF THE ANCHOR ROD WILL NOT BE ALLOWED. THE RADIUS OF THE HOOK BEND SHALL NOT BE LESS THAN 4 TIMES THE NOMINAL DIAMETER OF THE ANCHOR ROD. A TACK WELDED ANCHOR ROD MAY BE SUBSTITUTED WITH THE APPROVAL OF THE ENGINEER.
- THE ANCHOR BOLTS AND RACEWAYS SHALL BE PROPERLY SECURED IN PLACE BEFORE THE CONCRETE IS PLACED IN THE FORM.
- THE ANCHOR RODS SHALL BE ACCORDING TO ASTM F1554 GRADE 725 (GRADE 105). NUTS SHALL BE HEXAGON NUTS ACCORDING TO ASTM A 194 2H OR ASTM A 563 DH, AND WASHERS SHALL BE ACCORDING TO ASTM F 436.
- THE CONTRACTOR SHALL COORDINATE EXTENSION OF ANCHOR BOLTS ABOVE TOP OF FOUNDATION WITH THE BREAKAWAY DEVICE MANUFACTURER'S REQUIREMENTS. IF LIGHT POLE IS MOUNTED WITHOUT BREAKAWAY DEVICE, ANCHOR BOLTS SHALL PROJECT 2 3/4" (69.9 mm) ABOVE TOP OF THE FOUNDATION. THE CONTRACTOR SHALL CONFIRM ANCHOR BOLT EXTENTION WITH ENGINEER.
- RACEWAYS SHALL PROJECT 1" (25.4 mm) ABOVE THE TOP OF THE FOUNDATION.
- THE CABLE TRENCH SHALL BE BACKFILLED AND FIRMLY COMPACTED BEFORE THE LIGHT IS ERCTED.



BILL OF MATERIAL

MARK	NO.	SIZE	LENGTH	SHAPE
a	10	6	SEE BELOW	—
s	12	4	8'-0" (2,438 m)	□
s ₁	3	3	7'-6" (2,286 m)	□
v ₁	8	6	2'-9" (0,838 m)	—
v ₂				

OFFSET SCHEDULE

SEWER DIAM. d IN.	PILE OFFSET FROM C-MED'N FT.	LENGTH OF BAR a FT.
UP TO 24" (609.6 mm)	3'-3" (0,991 m)	#6 x 5'-3" (1,600 m)
27" (685.8 mm) TO	3'-9" (1,143 m)	5'-9"
36" (914.4 mm)	(1,143 m)	(1,753 m)
42" (1066.8 mm) TO	4'-6" (1,372 m)	6'-6"
48" (1219.2 mm)	(1,372 m)	(1,981 m)
54" (1371.6 mm) TO	5'-0" (1,524 m)	7'-0"
60" (1524.0 mm)	(1,524 m)	(2,134 m)
66" (1676.4 mm) TO	5'-6" (1,676 m)	7'-6"
72" (1828.8 mm)	(1,676 m)	(2,286 m)

FILE NAME = K:\diststd22x34\be310.dgn	USER NAME = bauerdl	DESIGNED -	REVISED - 06-16-08 R. TOMSONS
PLOT SCALE = 50,000' / IN.	PLOT DATE = 6/16/2008	DRAWN -	REVISED -
		CHECKED -	REVISED -
		DATE -	REVISED -

STATE OF ILLINOIS
DEPARTMENT OF TRANSPORTATION

LIGHT POLE FOUNDATION OFFSET
40' (12,192 m) TO 47' 12" (14,478 m) M.H.
15" (381 mm) BOLT CIRCLE

F.A.P. RITE.	SECTION	COUNTY	TOTAL SHEETS	SHEET NO.
307	129-R-Z	KANE	243	158
	BE-310			CONTRACT NO. 62195
ILLINOIS FED. AID PROJECT				

6/16/2008
K:\diststd22x34\be310.dgn
bauerdl