

BENCH MARK: C.P. #63

Chiseled "X" on N.W. Flange Bolt of F.H. at N.E. Corner of Ill. Rte. 64 & N. 12th Ave., Sta. 86+79, 35 Ft. Lt., El. 740.61

SHEET 51 OF 53

| F.A.P. RTE. | SECTION | COUNTY | TOTAL SHEETS | SHEET NO. |
|-----------------------|---------|------------------|--------------|-----------|
| 307 | 129-R-2 | KANE | 243 | 161 |
| STA. | | TO STA. | | |
| FED. ROAD DIST. NO. 1 | | ILLINOIS | | |
| | | FED. AID PROJECT | | |

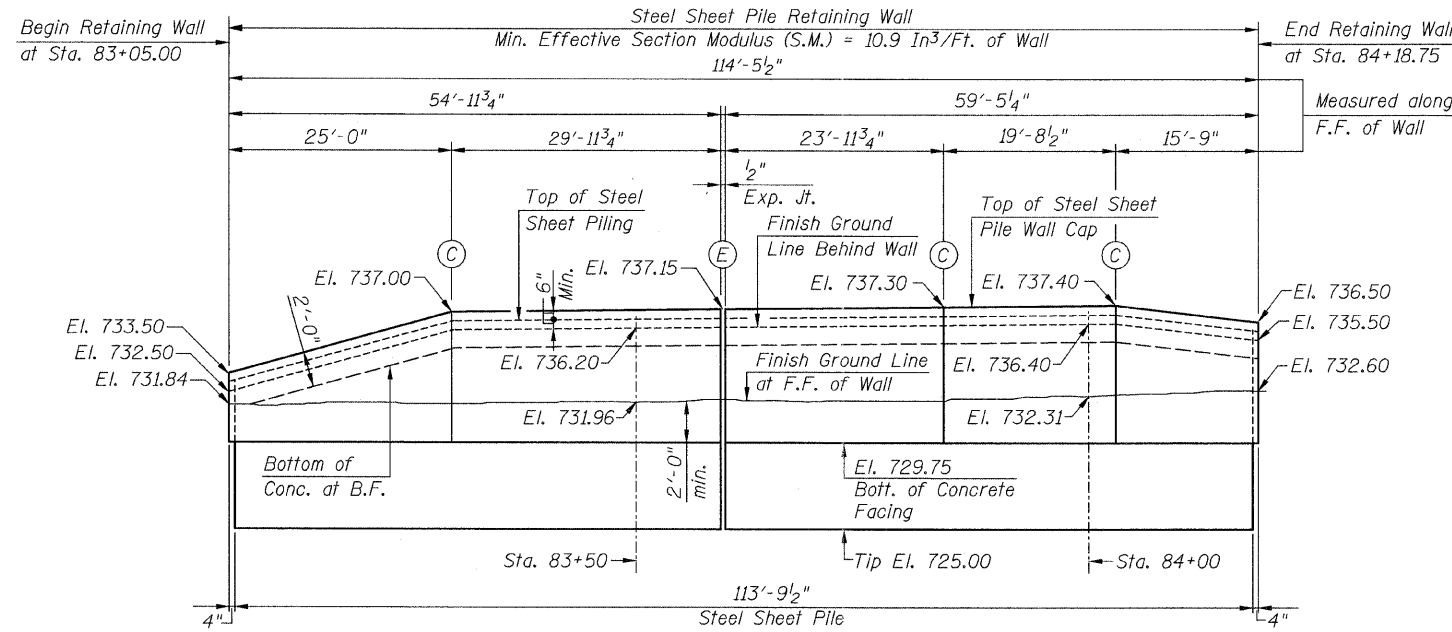
CONTRACT NO. 62195

INDEX OF SHEETS

1. PLAN & ELEVATION
2. REINFORCEMENT DETAILS
3. SOIL BORING LOGS

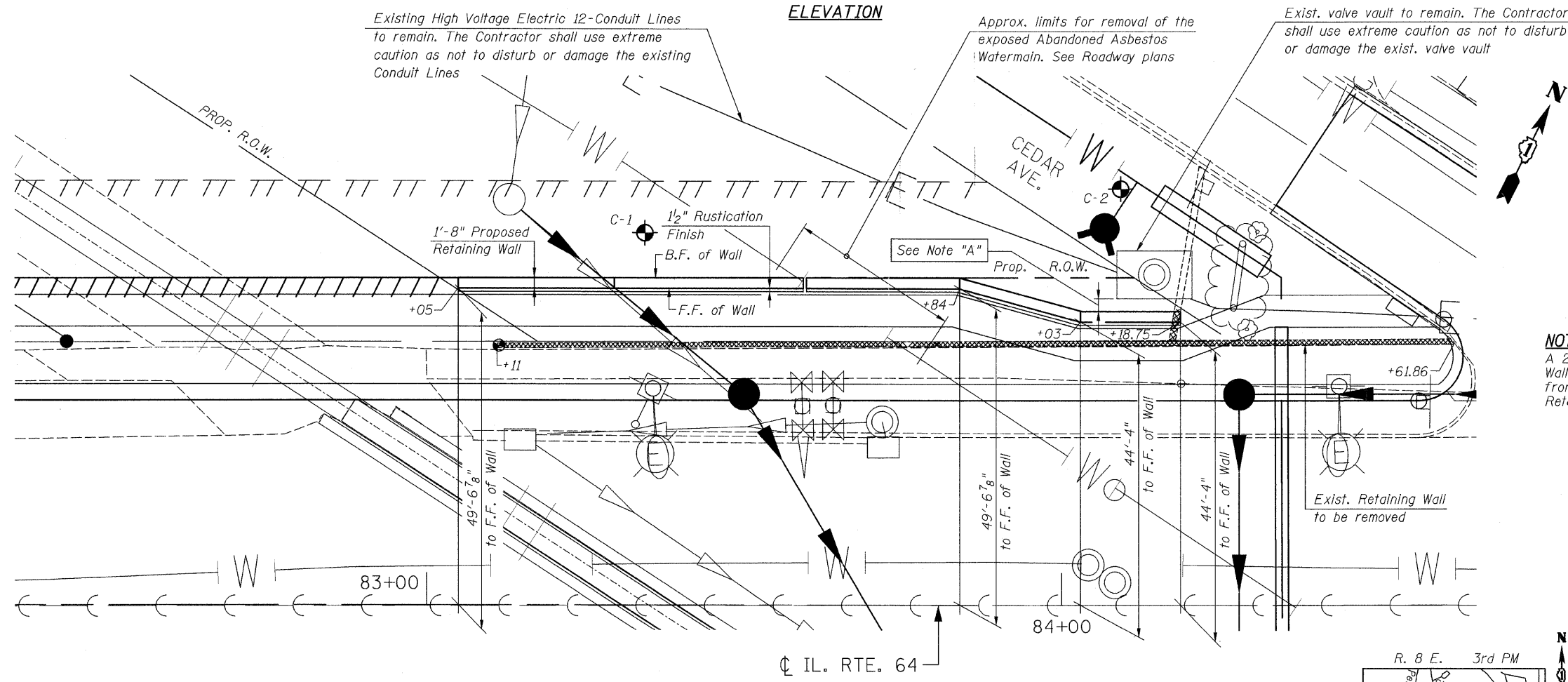
TOTAL BILL OF MATERIAL

| ITEM | UNIT | QUANTITY |
|----------------------------------|---------|----------|
| Concrete Structures | Cu. Yd. | 37.0 |
| Reinforcement Bars, Epoxy Coated | Pound | 1,890 |
| Structure Excavation | Cu. Yd. | 72 |
| Stud Shear Connectors | Each | 597 |
| Concrete Removal | Cu. Yd. | 31.0 |
| Permanent Steel Sheet Piling | Sq. Yd. | 1,290 |
| Form Liner Textured Surface | Sq. Ft. | 630 |



LEGEND:
 F.F. = Front Face
 B.F. = Back Face
 (C) = Construction Jt.
 (E) = Expansion Jt. (1/2")

ELEVATION



PLAN OF WALL
SHEET PILE RETAINING WALL (RW-2)

DESIGN SPECIFICATIONS

AASHTO Standard Specifications for Highway Bridges
 17th Edition-2002

DESIGN STRESSES

$f_c = 3,500$ psi
 $f_y = 60,000$ psi (Reinforcement)
 $f_y = 38,500$ psi (Structural Steel
 AASHTO M202, Gr. 50)

NOTE:
 See Sht. S2 for Construction Jt., Expansion Jt. & Rustication Finish details.

Reinforcement Bars shall conform to the requirements of A.S.T.M. A 706 Gr. 60. See Special Provisions.

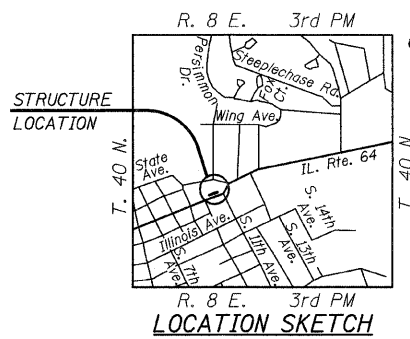
Reinforcement bars designated (E) shall be epoxy coated.

Rustication Finish is paid for as Form Liner Textured Surface

NOTE "A"
 A 2'-0" min. cl. from exist. valve vault to B.F. of proposed Retaining Wall must be maintained. If the exist. valve vault is less than 2'-0" from B.F. of the Retaining Wall, the Contractor may adjust the Retaining Wall as necessary, to ensure a 2'-0" min. clearance.



Bhadresh N. Shah
 BHADRESH N. SHAH 03/22/2011
 LICENSED STRUCTURAL ENGINEER
 STATE OF ILLINOIS LIC. No. 081-004476
 EXPIRES: 11-30-12



| REVISIONS | |
|-----------|------|
| NAME | DATE |
| | |
| | |
| | |

ILLINOIS DEPARTMENT OF TRANSPORTATION
PLAN & ELEVATION
SHEET PILE RETAINING WALL (RW-2)
 F.A.P. RTE. 307 (IL. RTE. 64)
 SECTION 129-R-2
 STA. 83+05.00 TO STA. 84+18.75
 KANE COUNTY
 STRUCTURE NO. 045-W002
 SCALE: 1"=10'
 DATE: AUGUST 10, 2011
 DRAWN BY: F.M.
 CHECKED BY: B.N.S.
CHRISTIAN-ROGE & ASSOC., INC.
 CHICAGO ILLINOIS

FILE NAME: r-ve64gw-rw2.dgn
 PLOT DATE: 9/12/2011
 PLOT SCALE: 1/8" = 1'-0"