

LEGEND:
 F.F. = Front Face
 B.F. = Back Face
 E.F. = Each Face

GENERAL NOTES:
 Reinforcement Bars shall conform to the requirements of ASTM A 706 Gr. 60. See Special Provisions.
 Reinforcement bars designated (E) shall be epoxy coated.

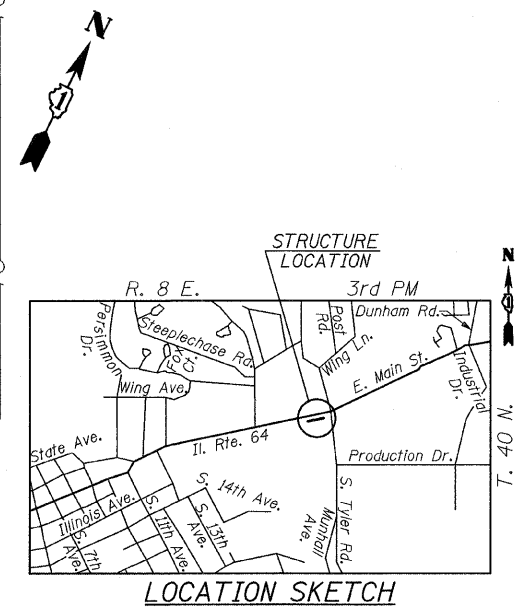
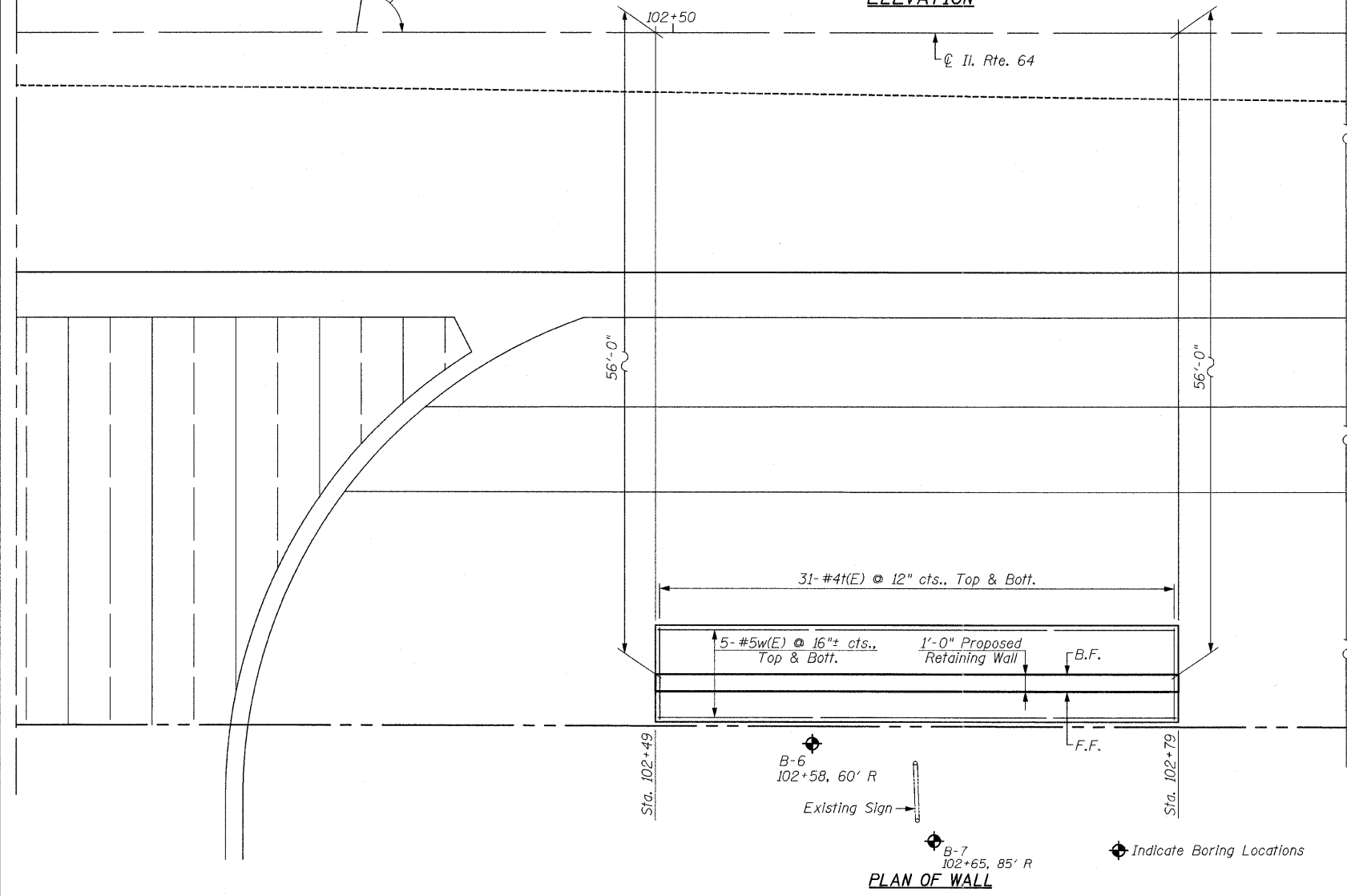
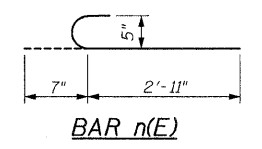
DESIGN SPECIFICATIONS
 AASHTO Standard Specifications for Highway Bridges 17th Edition-2002

DESIGN STRESSES
 $f'_c = 3,500$ psi
 $f_y = 60,000$ psi (Reinforcement)

TOTAL BILL OF MATERIAL

BAR NO.	SIZE	LENGTH	SHAPE
n(E)	#4	29'-8"	—
n(E)	#5	3'-6"	C
n(E)	#4	5'-4"	—
v(E)	#4	8'-3"	—
w(E)	#5	29'-8"	—

Concrete Structures	Cu. Yd.	18.8
Reinforcement Bars, Epoxy Coated	Pound	1,340
Geocomposite Wall Drain	Sq. Yd.	17
Structure Excavation	Cu. Yd.	74
Porous Granular Embankment (Special)	Cu. Yd.	22.3



REVISIONS

NAME	DATE

ILLINOIS DEPARTMENT OF TRANSPORTATION

PLAN & ELEVATION CAST-IN-PLACE RETAINING WALL (RW-4)

F.A.P. RTE. 307 (IL. RTE. 64)

SECTION 129-R-2

STA. 102+49.00 TO STA. 102+79.00

KANE COUNTY

STRUCTURE NO. 045-W013

SCALE: 1/4"=1'-0" DRAWN BY: F.M.

DATE: DECEMBER 3, 2011 CHECKED BY: B.N.S.

CHRISTIAN-ROGE & ASSOC., INC.
CHICAGO ILLINOIS

FILE NAME = rws4qpln1.dgn
 PLOT DATE = 12/2/2011
 PLOT SCALE = 4/85 1/2 IN.