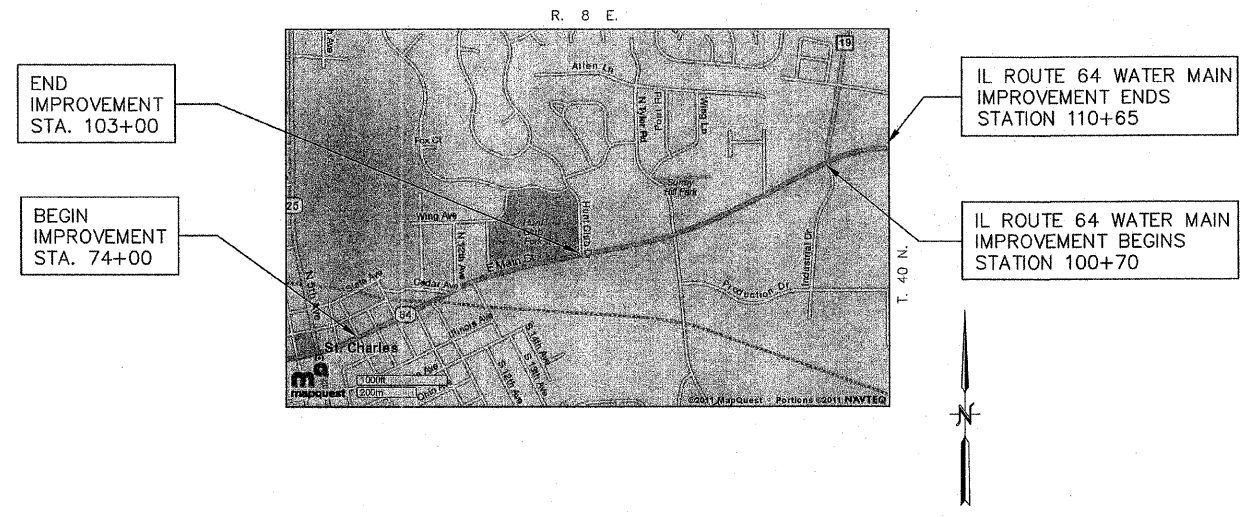
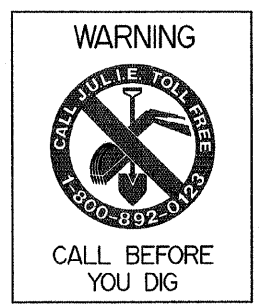
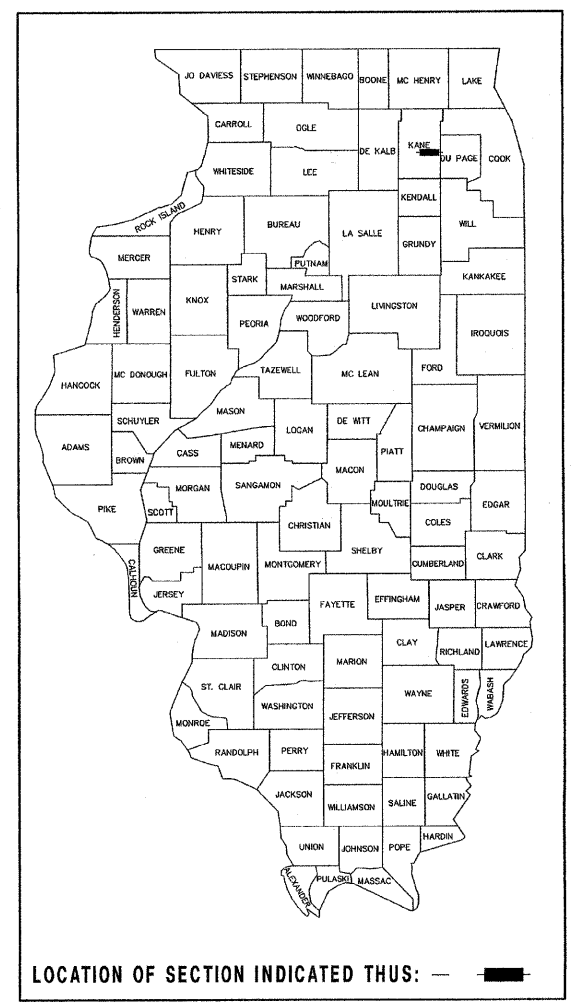


F.A.P. RTE.	SECTION	COUNTY	TOTAL SHEETS	SHEET NO.
307	129 R-2	KANE	243	171
PLAN AND PROFILE		CONTRACT NO. 62195		
FED. ROAD DIST. NO.	ILLINOIS	FED. AID PROJECT	REVISIONS	
			SEPTEMBER 30, 2010	
			OCTOBER 15, 2010	

INDEX TO SHEETS	
SHEET NO.	DESCRIPTION
WM-1	COVER SHEET
WM-2	GENERAL NOTES & LEGEND
WM-3	BILL OF MATERIALS
WM4	STAGING PLAN
WM5-WM12	PLAN AND PROFILE
WM13-WM14	SPECIAL DETAILS

CITY OF ST. CHARLES KANE COUNTY ILLINOIS

ILLINOIS ROUTE 64 WATER MAIN IMPROVEMENTS DUNHAM ROAD TO ST. CHARLES PLACE 7th AVENUE TO HUNT CLUB DRIVE 2010



LOCATION MAP
SCALE: 1" = 900'

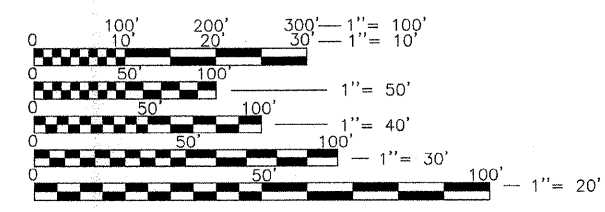
TOTAL LENGTH OF IMPROVEMENT — IL ROUTE 64 WATER MAIN = 995 LIN. FT. (0.188 MILES)
 IL ROUTE 64 WATER MAIN = 2900 LIN. FT. (0.549 MILES)
 3895 LIN. FT. (0.737 MILES)

DESCRIPTION OF PROJECT

THIS IMPROVEMENT CONSISTS OF WATER MAIN INSTALLATION, PAVEMENT PATCHING, HOT-MIX ASPHALT SURFACE REMOVAL AND REPLACEMENT, CONCRETE CURB AND GUTTER REMOVAL AND REPLACEMENT, CONCRETE SIDEWALK REMOVAL AND REPLACEMENT, PAVEMENT MARKING, LANDSCAPING AND OTHER APPURTENANT WORK NECESSARY TO COMPLETE THE PROJECT SHOWN HEREIN AND AS DESCRIBED IN THE SPECIFICATIONS.

APPROVED 5/17/11 20 11

Mark A. Stott
LOCAL AGENCY OFFICIAL

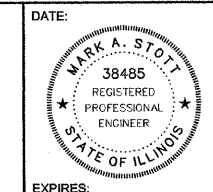


FULL SIZE PLANS HAVE BEEN PREPARED USING STANDARD ENGINEERING SCALES. REDUCED SIZED PLANS WILL NOT CONFORM TO STANDARD SCALES. IN MAKING MEASUREMENTS ON REDUCED PLANS, THE ABOVE SCALES MAY BE USED.

DATE: 5/17/11

BY: *Mark A. Stott*
MARK A. STOTT

LICENSE EXPIRES: November 30, 2011



HAMPTON, LENZINI AND RENWICK, INC.
CIVIL ENGINEERS - STRUCTURAL ENGINEERS - LAND SURVEYORS

HLR
380 SHEPARD DRIVE
ELGIN, ILLINOIS 60123
847.697.8700 www.hirengineering.com

184.000999
ILLINOIS PROFESSIONAL DESIGN FIRM L.S. / P.E. / S.E. CORPORATION

PROJECT NUMBER: 10.0186.530 DATE: 1-10-11

P:\2010\100186\cadd\DOT_WA.dwg (05014-sh1-cover.dwg) Jul 27, 2011 at 14:27