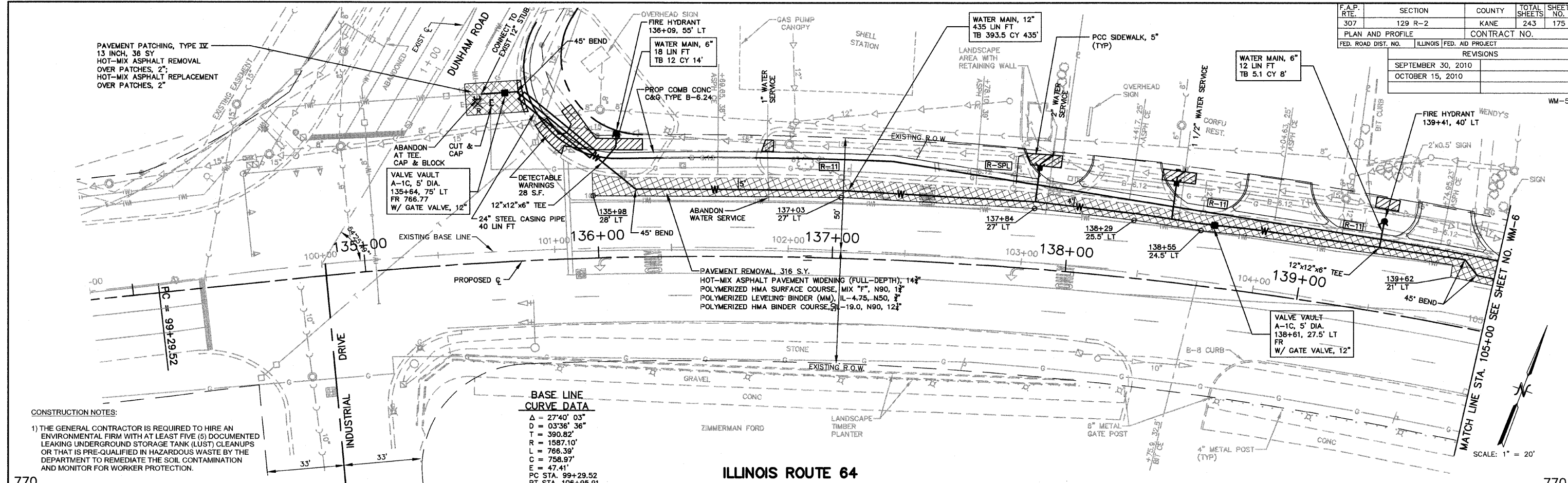


F.A.P. RTE.	SECTION	COUNTY	TOTAL SHEETS	SHEET NO.
307	129 R-2	KANE	243	175
PLAN AND PROFILE		CONTRACT NO.		
FED. ROAD DIST. NO.		ILLINOIS FED. AID PROJECT		
REVISIONS				
SEPTEMBER 30, 2010				
OCTOBER 15, 2010				



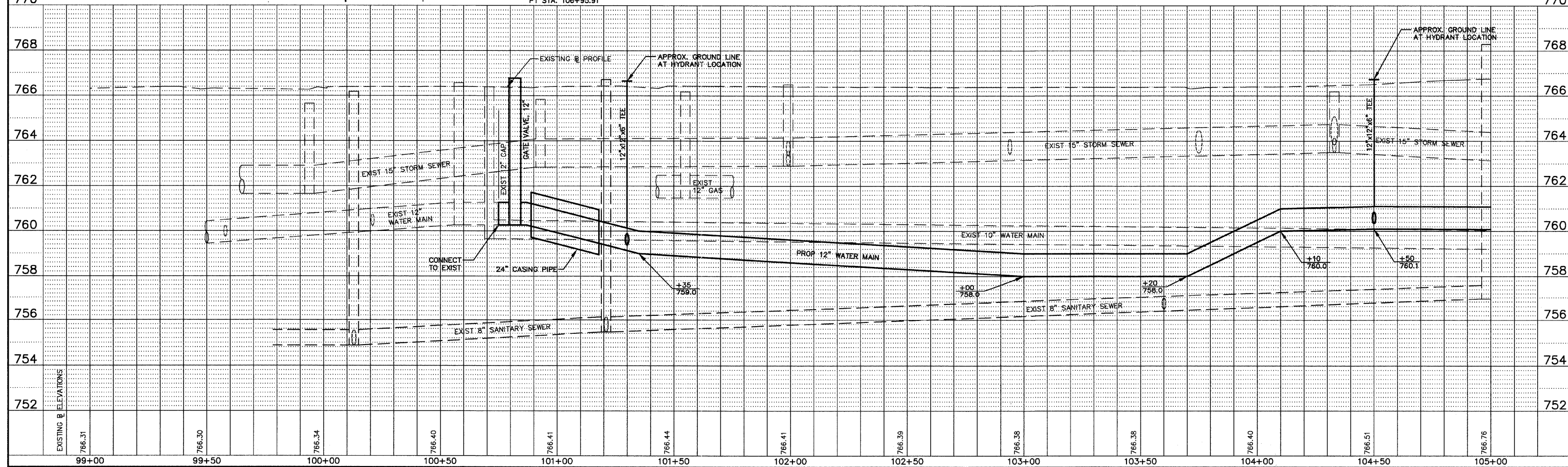
CONSTRUCTION NOTES:

1) THE GENERAL CONTRACTOR IS REQUIRED TO HIRE AN ENVIRONMENTAL FIRM WITH AT LEAST FIVE (5) DOCUMENTED LEAKING UNDERGROUND STORAGE TANK (LUST) CLEANUPS OR THAT IS PRE-QUALIFIED IN HAZARDOUS WASTE BY THE DEPARTMENT TO REMEDIATE THE SOIL CONTAMINATION AND MONITOR FOR WORKER PROTECTION.

BASE LINE CURVE DATA

Δ	= 27°40' 03"
D	= 03'36" 36"
T	= 390.82'
R	= 1587.10'
L	= 766.39'
E	= 758.97'
F	= 47.41'
PC STA.	99+29.52
PT STA.	106+95.91

ILLINOIS ROUTE 64



EXISTING B ELEVATIONS	766.31	766.30	766.34	766.40	766.41	766.44	766.41	766.39	766.36	766.36	766.40	766.51	766.76
	99+00	99+50	100+00	100+50	101+00	101+50	102+00	102+50	103+00	103+50	104+00	104+50	105+00