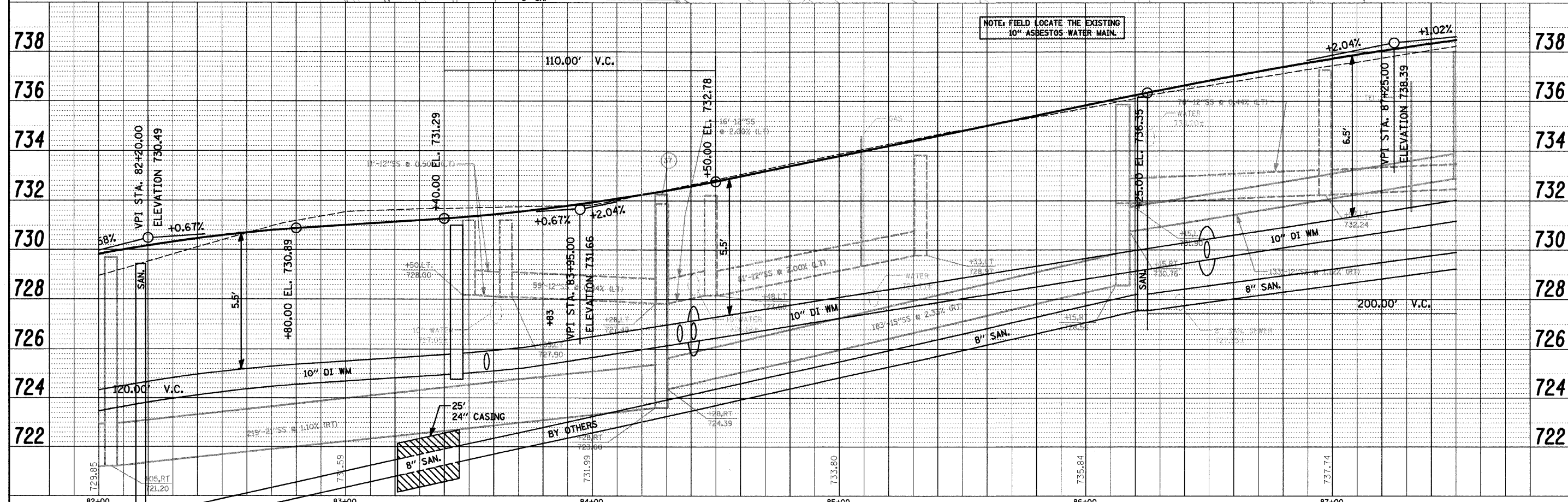
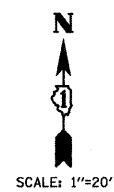
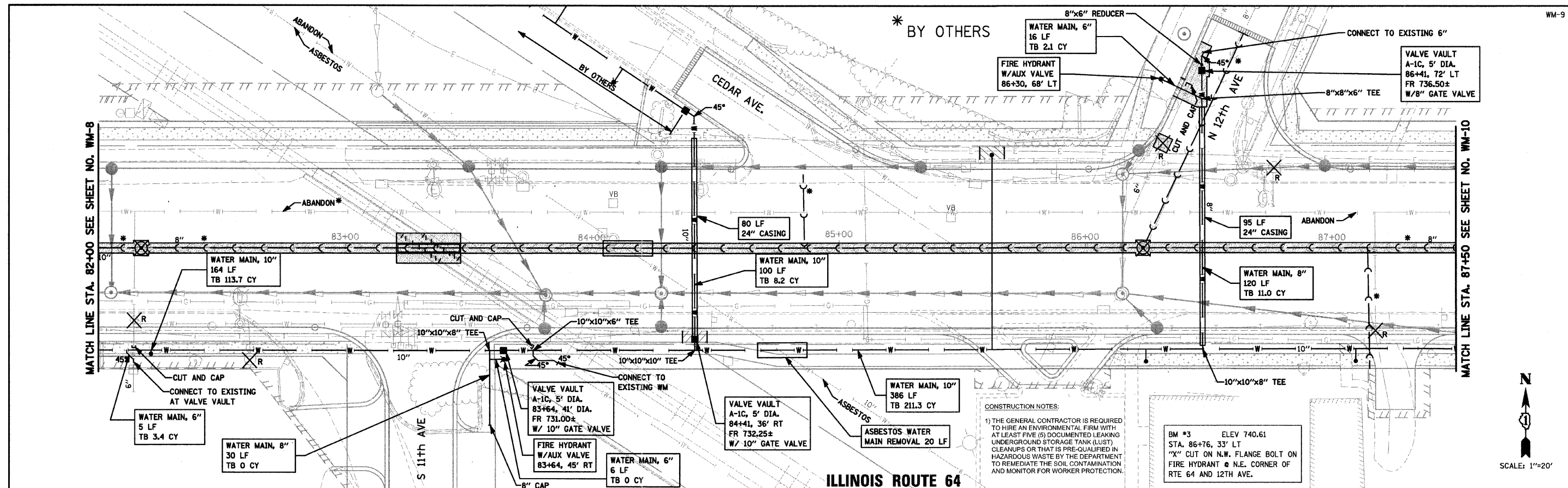


DATE	
BY	
REVIEWED	
NOTE BOOK	
ALIGNMENT CHECKED	
BLK. NOTED	
NO. OF WAY CHECKED	
FILE NAME	

DATE	
BY	
REVIEWED	
NOTE BOOK	
GRADES CHECKED	
BLK. NOTED	
STRUCTURE NOTATIONS	
CHFD	



FILE NAME = Pr\2010\120106\cad\1001\WM\dwg\100106\sh1.dgn	USER NAME = users	DESIGNED - LB	REVISED - 9-30-2010	<b>STATE OF ILLINOIS</b> <b>DEPARTMENT OF TRANSPORTATION</b>	<b>IL RTE 64 SANITARY AND WATER MAIN IMPROVEMENTS</b> <b>PLAN AND PROFILE</b>	F.A.P. RTE. 307	SECTION 129 R-2	COUNTY KANE	TOTAL SHEETS 243	SHEET NO. 179	
PLOT SCALE = #SCALE#	CHECKED - AS	REVISOR - 1-10-2011	SCALE: 1"=20'			SHEET NO. OF SHEETS	STA. 82+00 TO STA. 87+50	CITY OF ST. CHARLES		CONTRACT NO. 62195	
PLOT DATE = #DATE#	DATE - 9-17-2010	REVISOR -	ILLINOIS FED. AID PROJECT								