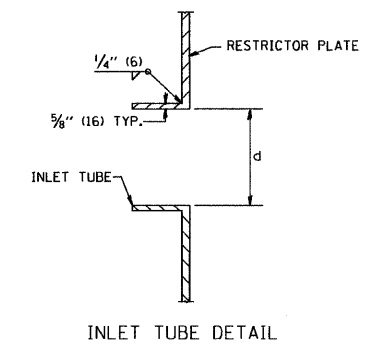
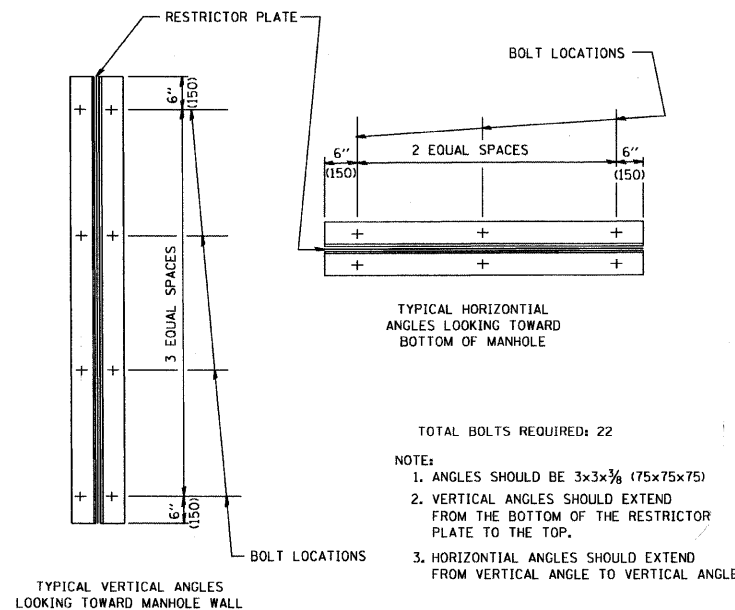


- NOTES:
1. ALL STEEL ANGLES AND PLATES TO BE GALVANIZED AFTER FABRICATION.
 2. ALL RESTRICTOR PLATES, ANGLES AND HARDWARE TO BE INCLUDED IN THE COST OF THE MANHOLE.
 3. BASIS OF PAYMENT: "MANHOLES, TYPE A, 6 FT. (1.8 m)-DIAMETER, TYPE 1 FRAME, CLOSED LID, RESTRICTOR PLATE" EACH



STATION	MANHOLE DIAMETER	FRAME AND GRATE	RESTRICTOR TYPE	INSIDE RESTRICTOR TYPE DIAMETER in. (mm) (d)	INVERT OF RESTRICTOR TYPE	ELEVATION OF TOP OF PLATE OVERFLOW
129+18, 44'RT.	6'	2-T1F CL	2	10"	763.80	765.80
132+51, 55'RT.	6'	2-T1F CL	2	21"	758.95	762.91
142+77, 42'RT.	6'	2-T1F CL	2	27"	759.16	763.00



RESTRICTOR TYPE					
1	2	3	4	5	6
RE-ENTRANT TUBE	SHARP EDGED	SQUARE EDGED	RE-ENTRANT TUBE	SQUARE EDGED	ROUNDED
LENGTH: 1/2 TO 1 DIA.		STREAM CLEARS SIDES	LENGTH: 2-1/2 DIA.	LENGTH: 2-1/2 DIA.	
C=.52	C=.61	C=.61	C=.73	C=.82	C=.98

VALUES OF "C" FOR CIRCULAR AND SQUARE ORIFICES

- TOTAL BOLTS REQUIRED: 22
- NOTE:
1. ANGLES SHOULD BE 3x3x3/8 (75x75x75)
 2. VERTICAL ANGLES SHOULD EXTEND FROM THE BOTTOM OF THE RESTRICTOR PLATE TO THE TOP.
 3. HORIZONTAL ANGLES SHOULD EXTEND FROM VERTICAL ANGLE TO VERTICAL ANGLE.

STATE OF ILLINOIS
DEPARTMENT OF TRANSPORTATION

MANHOLE WITH
RESTRICTOR PLATE

FILE NAME = W:\dststd\22x34\bd12.dgn	USER NAME = geghenobt	DESIGNED - R. SHAH	REVISED - R. SHAH 10-25-94
		DRAWN -	REVISED - E. GOMEZ 08-28-00
	PLOT SCALE = 50.000' / IN.	CHECKED -	REVISED - M. GOMEZ 01-08-01
	PLOT DATE = 1/4/2000	DATE - 09-09-94	REVISED -

SCALE: NONE SHEET NO. 1 OF 1 SHEETS STA. 74+00 TO STA. 149+23

F.A.P. RTE. 307	SECTION 129-R-2	COUNTY KANE	TOTAL SHEETS 243	SHEET NO. 229
BD600-04 (BD-12)		CONTRACT NO. 62195		
FED. ROAD DIST. NO. 1 ILLINOIS FED. AID PROJECT				

ALL DIMENSIONS ARE IN INCHES (MILLIMETERS) UNLESS OTHERWISE SHOWN.