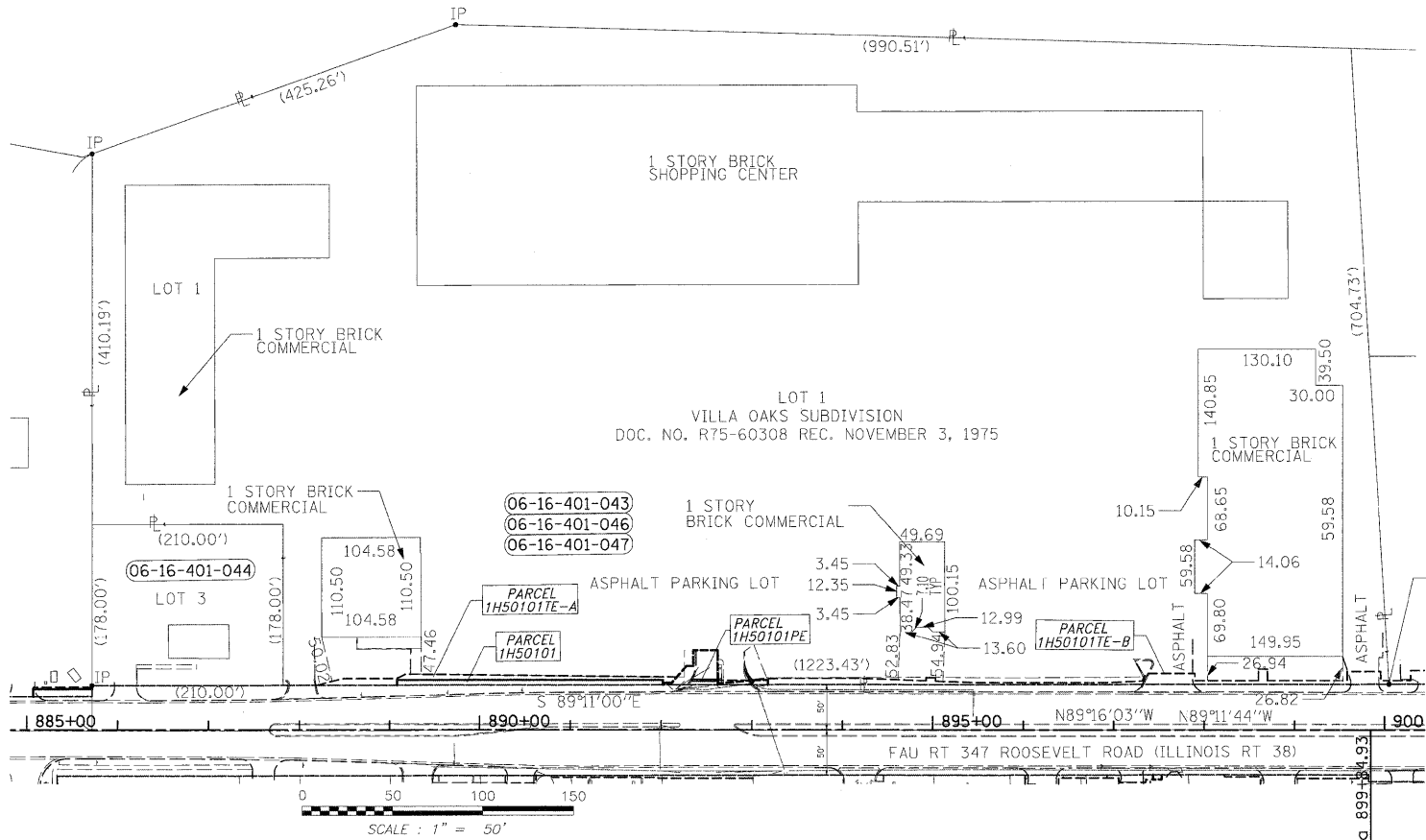




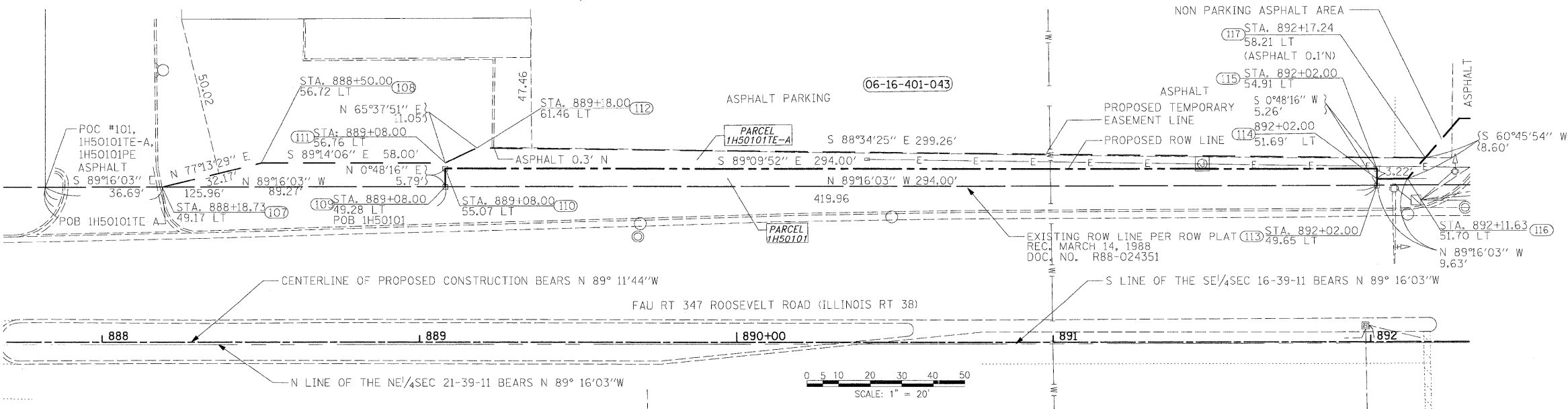
PARCEL NUMBER	OWNER	TOTAL HOLDING ACRES	PART TAKEN ACRES	REMAINDER ACRES	PREV. DED. ACRES	EASEMENT ACRES	EASEMENT PURPOSE	PERMANENT TAX INDEX NUMBER	PROPERTY ACQUIRED BY
1H50101	VILLA OAKS, LLC, AN ILLINOIS LIMITED LIABILITY COMPANY	21.843 ACRES	0.037 ACRES	21.806 ACRES					
1H50101TE-A					0.048 ACRES	CONSTRUCTION	06-16-401-043		
1H50101TE-B					0.089 ACRES	CONSTRUCTION	06-16-401-046		
1H50101PE					0.037 ACRES	CONSTRUCTION	06-16-401-047		

PROJECT COORDINATES ARE SURFACE COORDINATES, AND CAN BE CONVERTED TO STATE PLANE COORDINATES, EAST ZONE, NAD 83 BY MULTIPLYING THE COORDINATES BY 0.99997097.

POINT TABLE		
NUMBER	NORTHING	EASTING
107	1891985.4466	1079357.4591
108	1891992.5600	1079388.8321
109	1891984.3055	1079446.7219
110	1891990.0959	1079446.8032
111	1891991.7857	1079446.8269
112	1891996.3448	1079456.8920
113	1891980.5472	107940.6981
114	1891982.5883	1079740.7268
115	1891985.8080	1079740.7720
116	1891982.4631	1079750.3560
117	1891988.8955	1079756.0624



TOTAL HOLDING DEPICTION
PARCELS 1H50101, 1H50101PE, 1H50101TE-A & 1H50101TE-B



FILE NAME =
D163197-ah-ropplan02.dgn

USER NAME IDOT
DESIGNED DA/SC
DRAWN BM/CC/BB
CHECKED DA
PLOT DATE 10/25/2011

DESIGNED DA/SC
DRAWN BM/CC/BB
CHECKED DA
DATE 06/08/2011

REVISED 10/24/2011
REVISED
REVISED
REVISED

STATE OF ILLINOIS
DEPARTMENT OF TRANSPORTATION

RIGHT OF WAY PLAN
STA 885 + 72 TO STA 892 + 17
SCALE: AS SHOWN SHEET NO. 2 OF 8 SHEETS STA. TO STA.

F.A.P. RTE.	SECTION	COUNTY	TOTAL SHEETS	SHEET NO.
347	02-00077-00-SW	DUPAGE	73	29
CONTRACT NO. 63197				
FED. ROAD DIST. NO. ILLINOIS FED. AID PROJECT				