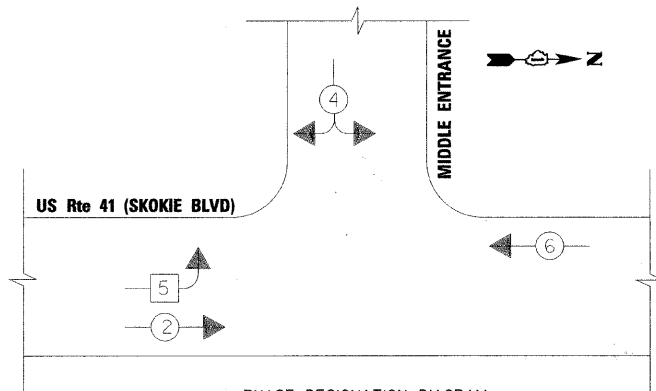


TEMPORARY CONTROLLER SEQUENCE

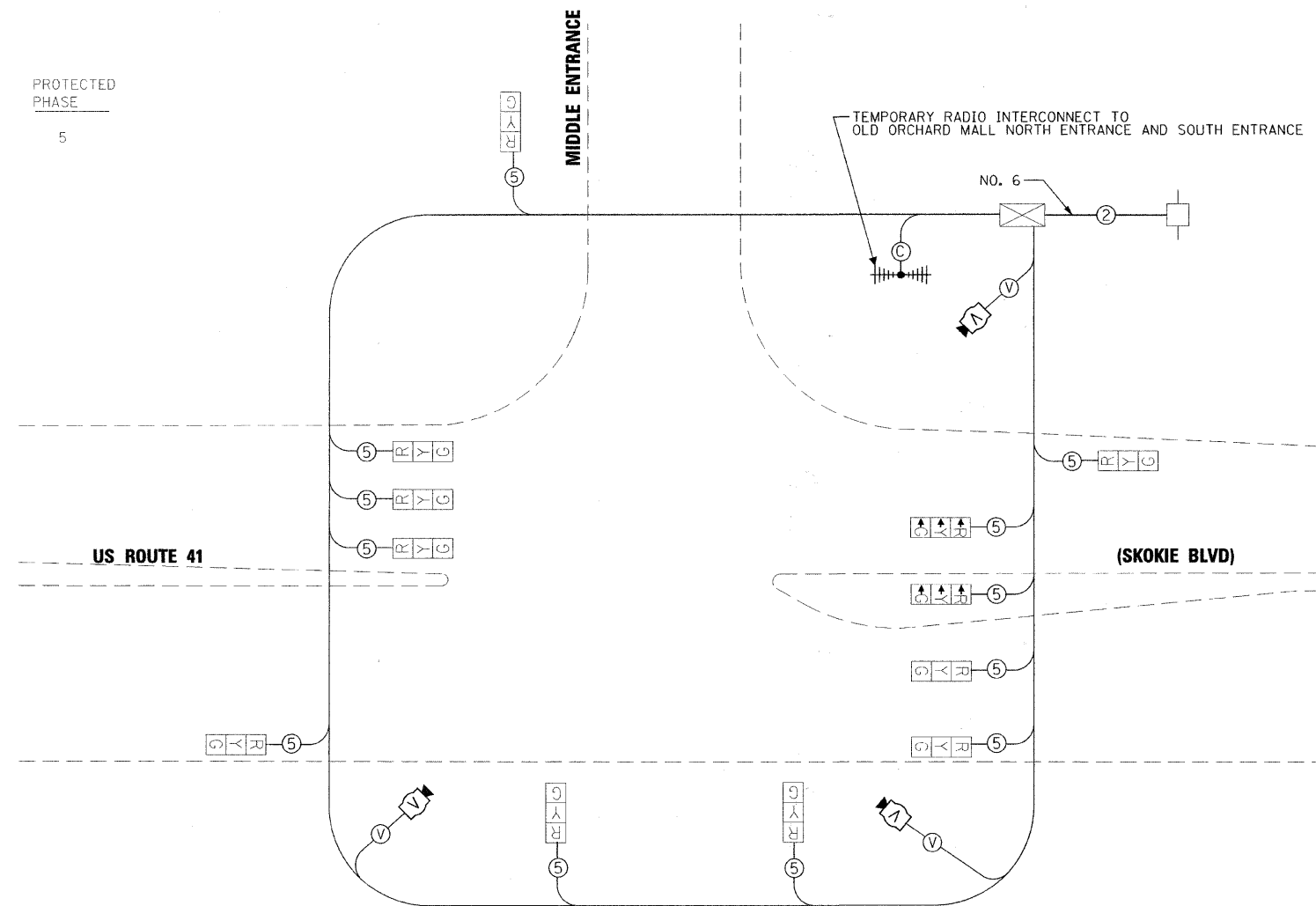


PHASE DESIGNATION DIAGRAM

LEGEND

- ⊗ → DUAL ENTRY PHASE
- ⊗ → SINGLE ENTRY PHASE
- ⊗ OL OVERLAP
- \* NUMBER REFERS TO ASSOCIATED PHASE

OVERLAP LETTER	PERMISSIVE PHASE	PROTECTED PHASE
B	= 4	+ 5



U.S. ROUTE 41 (SKOKIE BOULEVARD) AND MIDDLE ENTRANCE  
TEMPORARY CABLE PLAN

I.D.O.T TRAFFIC SIGNAL INSTALLATION ELECTRICAL SERVICE REQUIREMENTS					TOTAL WATTAGE
TYPE	NO. LAMPS	WATTAGE		% OPERATION	
SIGNAL (RED)	10	135	17	0.50	85
(YELLOW)	10	135	25	0.25	63
(GREEN)	10	135	15	0.25	38
ARROW	6	135	12	0.10	7
PED. SIGNAL		90	25	1.00	
CONTROLLER	1	100	100	1.00	100
ILLUM. SIGN		84		0.05	
FLASHER				0.50	--
ENERGY COSTS TO:					TOTAL = 293
VILLAGE OF SKOKIE 9050 GROSS POINT ROAD SKOKIE, IL 60077					
ENERGY SUPPLY CONTACT: MR. LARRY SHANKS PHONE: (847) 816-5465 COMPANY: COMED					

THE TRAFFIC SIGNAL CONTROL EQUIPMENT FOR THIS SIGNAL SHALL BE "ECONOLITE" TO MATCH THE EXISTING ADJACENT SYSTEM

**TranSystems**  
1475 EAST WOODFIELD ROAD, SUITE 600  
SCHLAUMBURG, ILLINOIS 60173  
(847) 605-9600

FILE NAME = g:\ch\B\WMS\road\sheet\045-15-219-T-08 NE.dwg	USER NAME = CEComr	DESIGNED FA	REVISED -	<b>STATE OF ILLINOIS DEPARTMENT OF TRANSPORTATION</b>	<b>U.S. ROUTE 41 (SKOKIE BOULEVARD) AND MIDDLE ENTRANCE TEMPORARY CABLE PLAN &amp; PHASE DESIGNATION DIAGRAM</b>	F.A.P. RTE. = 350	SECTION = 00-00243-00-CH	COUNTY = COOK	TOTAL SHEETS = 142	SHEET NO. = 72		
PLOT SCALE = 20,000 1/2 IN.	CHECKED KMM	REVISIONS	SCALE: N.T.S.			SHEET NO. 15 OF 33 SHEETS	STA. TO STA.	FED. ROAD DIST. NO. 7 [ILLINOIS] FED. AID PROJECT				
PLOT DATE = 6/3/2011	DATE 06/03/2011	REVISIONS										
CONTRACT NO. 63566												