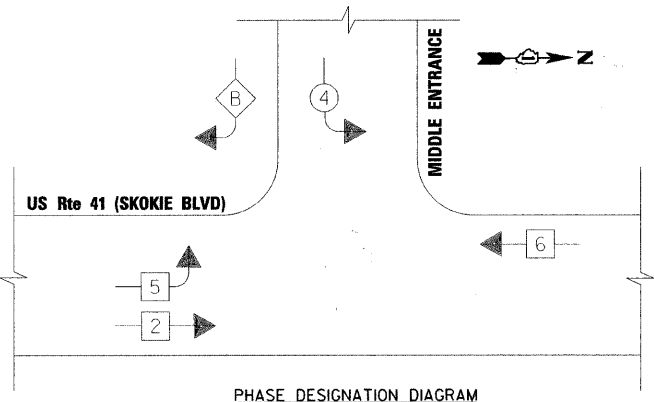


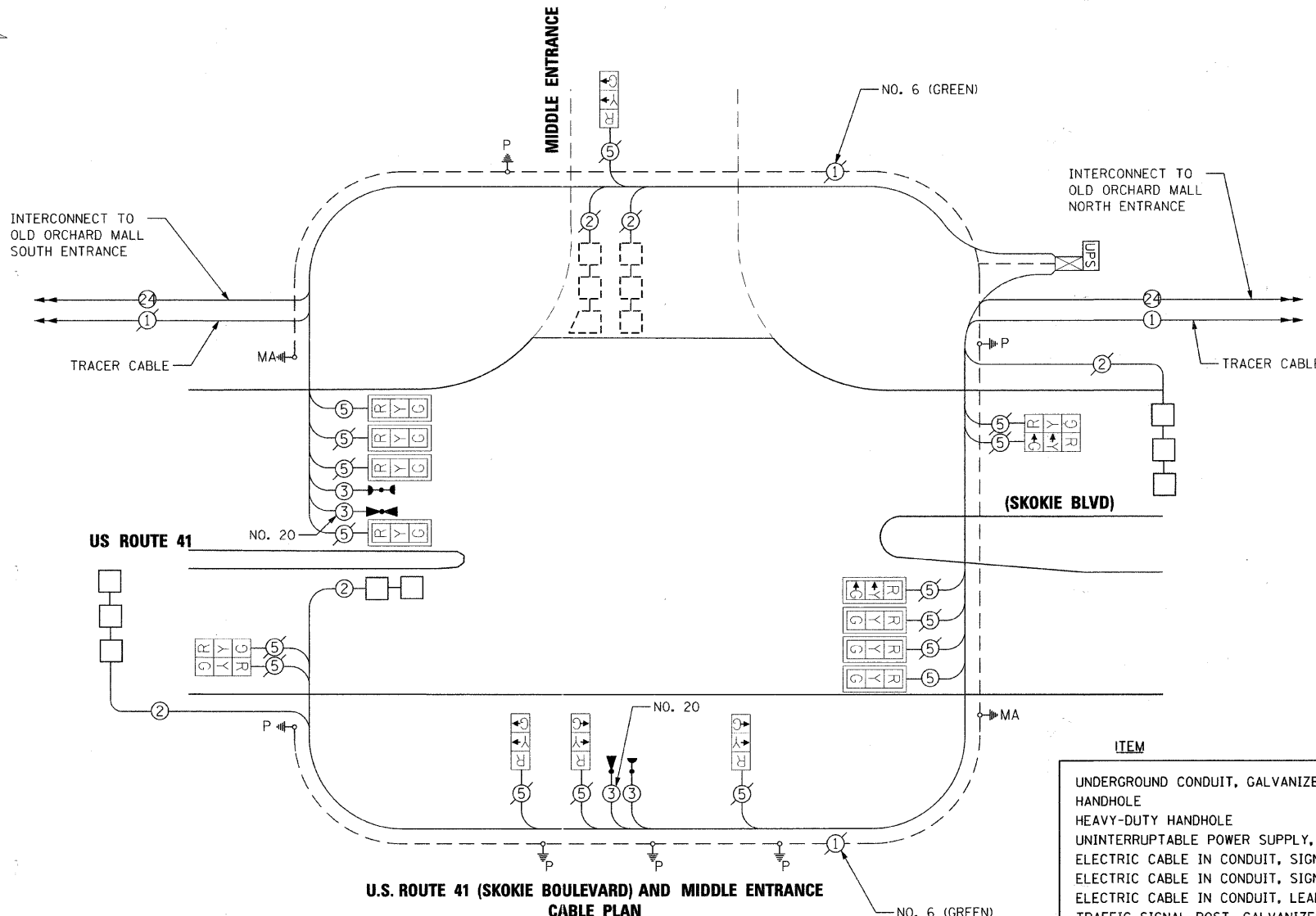
EXISTING CONTROLLER SEQUENCE

LEGEND

- ⊗ ← DUAL ENTRY PHASE
- ⊗ ← SINGLE ENTRY PHASE
- OL OVERLAP
- * NUMBER REFERS TO ASSOCIATED PHASE



PHASE DESIGNATION DIAGRAM



U.S. ROUTE 41 (SKOKIE BOULEVARD) AND MIDDLE ENTRANCE CABLE PLAN

I.D.O.T. TRAFFIC SIGNAL INSTALLATION ELECTRICAL SERVICE REQUIREMENTS					TOTAL WATTAGE
TYPE	NO. LAMPS	WATTAGE INCAND.	WATTAGE LED	% OPERATION	
SIGNAL (RED)	16	135	17	0.50	136
(YELLOW)	16	135	25	0.25	100
(GREEN)	16	135	15	0.25	60
ARROW		135	12	0.10	
PED. SIGNAL		90	25	1.00	
CONTROLLER	1	100	100	1.00	100
ILLUM. SIGN		84		0.05	
FLASHER				0.50	
ENERGY COSTS TO: VILLAGE OF SKOKIE 9050 GROSS POINT ROAD SKOKIE, IL 60077 ENERGY SUPPLY CONTACT: MR. LARRY SHANKS PHONE: (847) 816-5465 COMPANY: COMED					TOTAL = 396

ITEM	UNIT	QUANTITY
UNDERGROUND CONDUIT, GALVANIZED STEEL, 2" DIA.	FOOT	313
HANDHOLE	EACH	1
HEAVY-DUTY HANDHOLE	EACH	1
UNINTERRUPTABLE POWER SUPPLY, EXTENDED	EACH	1
ELECTRIC CABLE IN CONDUIT, SIGNAL NO. 14 3C	FOOT	531
ELECTRIC CABLE IN CONDUIT, SIGNAL NO. 14 5C	FOOT	386
ELECTRIC CABLE IN CONDUIT, LEAD-IN, NO. 14 1 PAIR	FOOT	789
TRAFFIC SIGNAL POST, GALVANIZED STEEL 18 FT.	EACH	1
DRILL EXISTING HANDHOLE	EACH	2
SIGNAL HEAD, LED, 1-FACE, 3-SECTION, MAST-ARM MOUNTED	EACH	8
SIGNAL HEAD, LED, 1-FACE, 3-SECTION, BRACKET MOUNTED	EACH	4
SIGNAL HEAD, LED, 2-FACE, 3-SECTION, BRACKET MOUNTED	EACH	2
TRAFFIC SIGNAL BACKPLATE, LOUVERED, ALUMINUM	EACH	8
DETECTOR LOOP, TYPE I	FOOT	286
LIGHT DETECTOR	EACH	2
LIGHT DETECTOR AMPLIFIER	EACH	1
TEMPORARY TRAFFIC SIGNAL INSTALLATION	EACH	1
MODIFY EXISTING CONTROLLER FOUNDATION	EACH	1
REMOVE ELECTRIC CABLE FROM CONDUIT	FOOT	464
REMOVE EXISTING TRAFFIC SIGNAL EQUIPMENT	EACH	1
REMOVE EXISTING HANDHOLE	EACH	2
ELECTRIC CABLE IN CONDUIT NO. 20 3/C, TWISTED, SHIELDED	FOOT	531
TEMPORARY TRAFFIC SIGNAL TIMING	EACH	1

