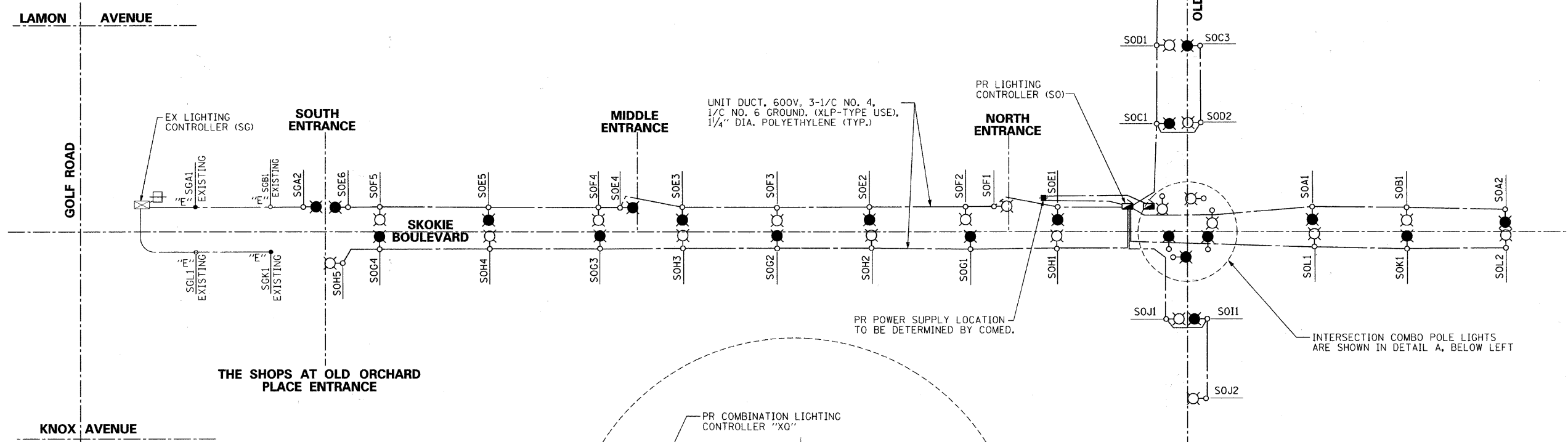
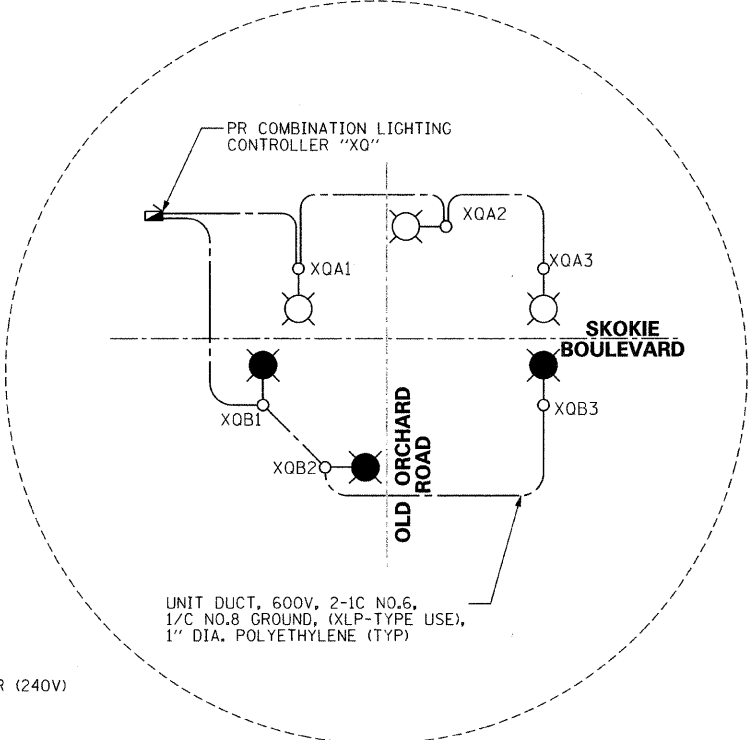


NOTE:
CIRCUITS C, D, E, F, G, H, I & J
FROM CONTROLLER "SG" ARE
NOT SHOWN FOR CLARITY



PR POWER SUPPLY LOCATION
TO BE DETERMINED BY COMED.

INTERSECTION COMBO POLE LIGHTS
ARE SHOWN IN DETAIL A, BELOW LEFT



SCHEDULE OF QUANTITIES

QUANTITY	UNIT	ITEM
1	EACH	ELECTRIC SERVICE INSTALLATION
1	L SUM	ELECTRIC UTILITY SERVICE CONNECTION
1,148	FOOT	UNDERGROUND CONDUIT, GALVANIZED STEEL, 2" DIA.
326	FOOT	UNDERGROUND CONDUIT, GALVANIZED STEEL, 4" DIA.
500	FOOT	UNIT DUCT, 600V, 2-1C NO.6, 1/C NO.8 GROUND, (XLP-TYPE USE), 1" DIA. POLYETHYLENE
7,700	FOOT	UNIT DUCT, 600V, 3-1C NO.4, 1/C NO.6 GROUND, (XLP-TYPE USE), 1 1/4" DIA. POLYETHYLENE
600	FOOT	ELECTRIC CABLE IN CONDUIT, 600V (XLP-TYPE USE) 1/C NO. 3/0
1,600	FOOT	AERIAL CABLE, 3-1/C NO. 4 WITH MESSENGER WIRE
35	EACH	LIGHT POLE, ALUMINUM, 45 FT. M.H., 15 FT. MAST ARM
350	FOOT	LIGHT POLE FOUNDATION, 24" DIAMETER
30	EACH	REMOVAL OF LIGHTING UNIT, SALVAGE
30	EACH	REMOVAL OF POLE FOUNDATION
1	EACH	REMOVAL OF LIGHTING CONTROLLER
6	EACH	TEMPORARY MAST ARM 15 FT.
1	EACH	TEMPORARY WOOD POLE, 60 FT., CLASS 4, 15 FT. MAST ARM
1	EACH	TEMPORARY WOOD POLE, 50 FT., CLASS 4
41	EACH	LUMINAIRE, STREET LIGHTING, HIGH PRESSURE SODIUM VAPOR, 400 WATT, 240 VOLT
1	EACH	LIGHTING CONTROLLER, SPECIAL
50	FOOT	LIGHT POLE FOUNDATION, 24" DIAMETER, OFFSET
7	EACH	TEMPORARY LUMINAIRE, SODIUM VAPOR, HORIZONTAL MOUNT, 400 WATT
41	EACH	LUMINAIRE SAFETY CABLE ASSEMBLY
15	CAL MO	MAINTENANCE OF LIGHTING SYSTEM

LOAD TABULATION

CIRCUIT	NO. OF LIGHTS	AMPS		WATTAGE
		BLACK	RED	
A	2	3.7	-	800
B	1	-	1.8	400
C	3	5.5	-	1,200
D	2	-	3.7	800
E	6	11.0	-	2,400
F	5	-	9.2	2,000
G	4	7.3	-	1,600
H	5	-	9.2	2,000
I	1	1.8	-	400
J	2	-	3.7	800
K	1	1.8	-	400
L	2	-	3.7	800
TOTAL	34	31.1	31.3	13,600

- LEGEND**
- E — EXISTING CABLE
 - — — PROPOSED CABLE
 - ▭ PROPOSED CONTROLLER (240V)
 - ▭ EXISTING CONTROLLER
 - PROPOSED SERVICE CONNECTION
 - ▭ EXISTING SERVICE CONNECTION
 - XXXX LIGHT POLE CIRCUIT
 - XX+XX STATION
 - “E” O EXISTING LUMINAIRE
 - LUMINAIRE, HPS, 400W, 240V, ON RED WIRE
 - LUMINAIRE, HPS, 400W, 240V, ON BLACK WIRE

TranSystems
1475 EAST WOODFIELD ROAD, SUITE 600
SCHLAUMBURG, ILLINOIS 60173
(847) 605-9600

FILE NAME = g:\sh81\0045\road\sheet\045-PL-205_WIRE.dwt	USER NAME = CECComin	DESIGNED FA	REVISED -	STATE OF ILLINOIS DEPARTMENT OF TRANSPORTATION	SKOKIE BOULEVARD (U.S. ROUTE 41) AND NORTH ENTRANCE ROADWAY LIGHTING WIRING DIAGRAM & SCHEDULE OF QUANTITIES	F.A.P. RTE. 350	SECTION 00-00243-00-CH	COUNTY COOK	TOTAL SHEETS 142	SHEET NO. 95		
PLT SCALE = 20,000 1" = 100'	CHECKED LGB	REVISIED -	REVISIED -			SCALE: N.T.S.	SHEET NO. 5 OF 12 SHEETS	STA. TO STA.	FED. ROAD DIST. NO. 7 ILLINOIS FED. AID PROJECT			
PLT DATE = 11/4/2011	DATE 11/07/2011	REVISIED -	REVISIED -									
CONTRACT NO. 63566												