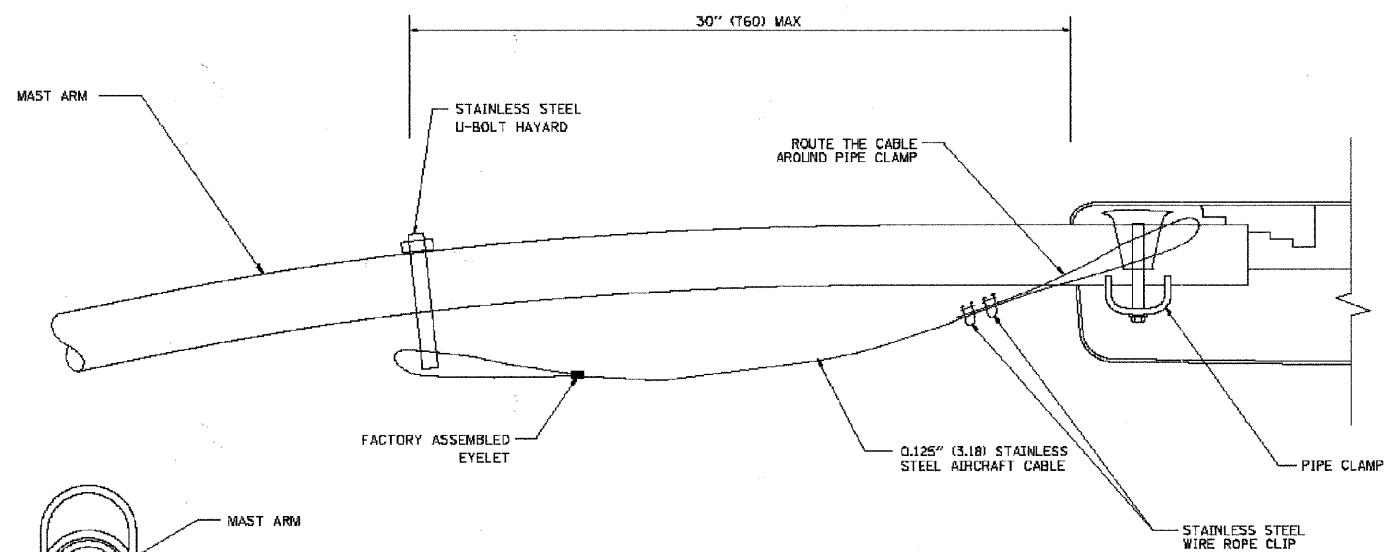
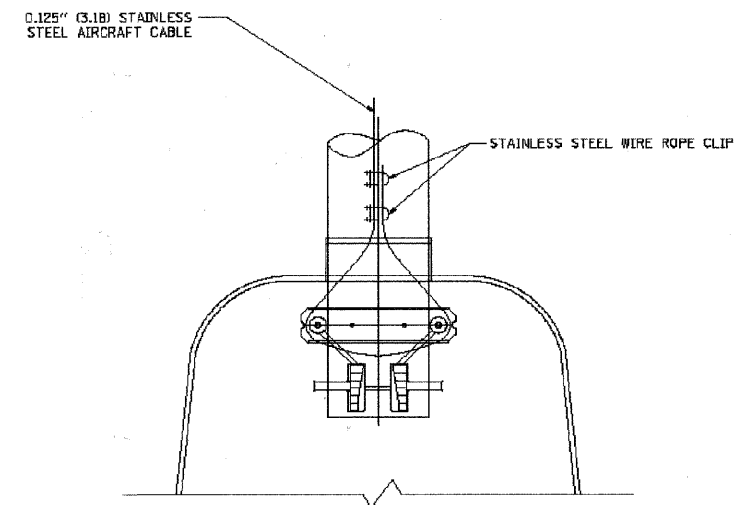
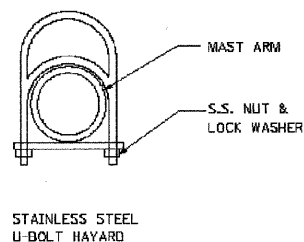


SIDE VIEW (TRUSS ARM)
N.T.S.



SIDE VIEW (SINGLE MEMBER OR DAVIT ARM)
N.T.S.



BOTTOM VIEW
N.T.S.

NOTES:

1. ALL DIMENSIONS ARE IN MILLIMETERS (INCHES) UNLESS OTHERWISE SHOWN.
2. CONTRACTOR SHALL ADJUST THE WIRE CLIP TO ELIMINATE ANY SLACK FROM THE WIRE ROPE.
3. THE 0.125" (3.18) STAINLESS STEEL AIRCRAFT CABLE SHALL REMAIN VISIBLE FROM THE GROUND LEVEL.
4. THE BREAKING STRENGTH OF THE CABLE SHALL BE 1700 LBS. MIN.

FILE NAME = M:\dskstd\1\22x34\be781.dgn	USER NAME = gaglianobt	DESIGNED	REVISED - 08/08/03	STATE OF ILLINOIS DEPARTMENT OF TRANSPORTATION	DISTRICT ONE - LUMINAIRE SAFETY CABLE ASSEMBLY	F.A.P. RTE. 350	SECTION 00-00243-00-CH	COUNTY COOK	TOTAL SHEETS 142	SHEET NO. 100
PLOT SCALE = 20.000 1/ IN.	CHECKED	REVISIONS	BE-701			CONTRACT NO. 63566				
PLOT DATE = 11/4/2011	DATE	REVISIONS	FED. ROAD DIST. NO. 7 ILLINOIS FED. AID PROJECT							
						SCALE: N.T.S.	SHEET NO. 10 OF 12 SHEETS	STA. TO STA.		