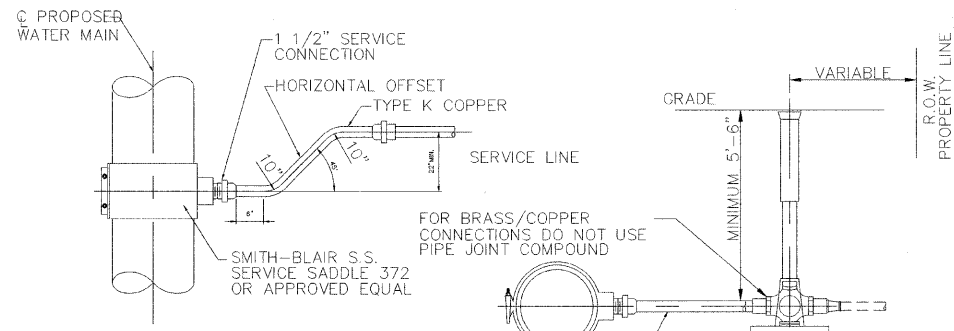


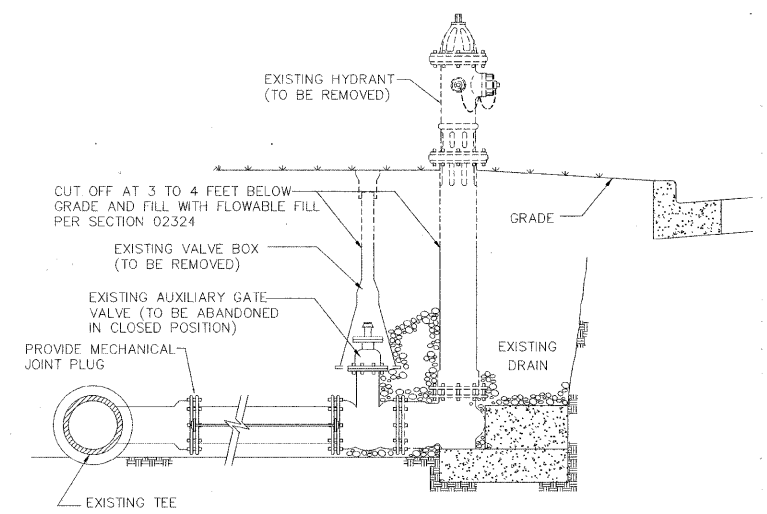
GENERAL NOTES:
CIRCUMFERENTIAL WRAPS OF PLASTIC TIE STRAPS SHOULD BE PLACED AT NO GREATER THAN FOUR FOOT INTERVALS ALONG THE BARREL OF THE PIPE WITH THE EXCESS FOLDED OVER TOP TO TAKE OUT EXCESS SLACK, HELPING TO MINIMIZE THE SPACE BETWEEN THE POLYETHYLENE AND THE PIPE. COMPLETE THE INSTALLATION BY OVERLAPPING THE POLYETHYLENE TUBE WRAP AT EACH END AND SEAL ENDS WITH PLASTIC TIE WRAPS. (PER AWWA C105)

POLYETHYLENE TUBE WRAP FOR DUCTILE IRON PIPE

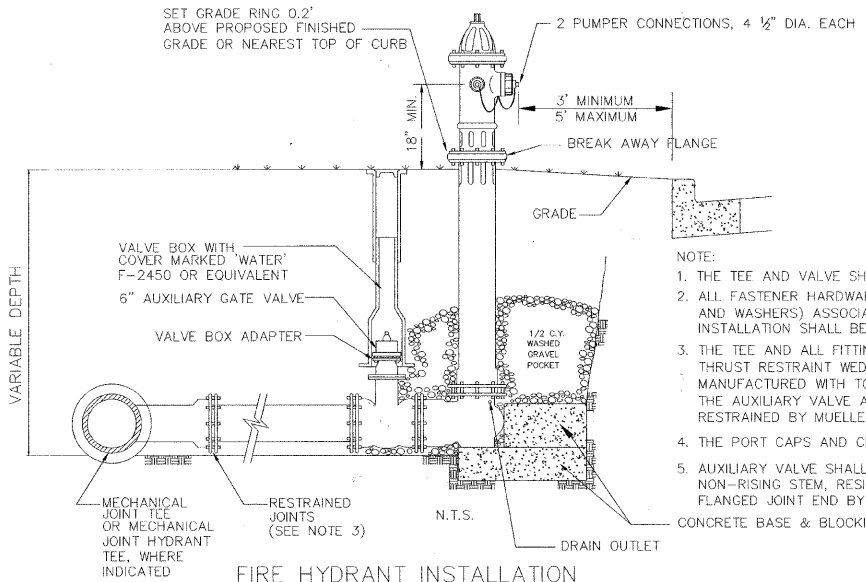


HORIZONTAL PLAN
SMITH-BLAIR S.S. SERVICE SADDLE 372 OR APPROVED EQUAL
REPLACE 1 1/2" SERVICE CONNECT TO EXISTING B-BOX SECTION

1 1/2" SERVICE TAP CONNECTION

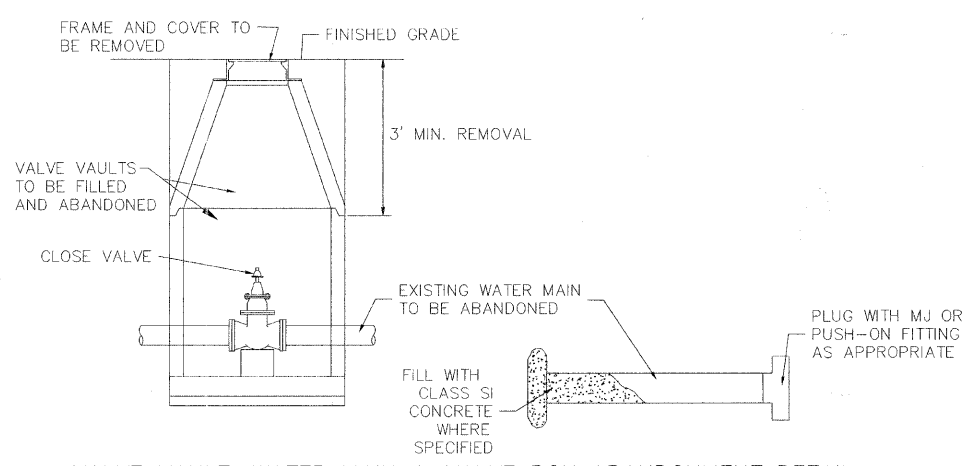


FIRE HYDRANT TO BE REMOVED

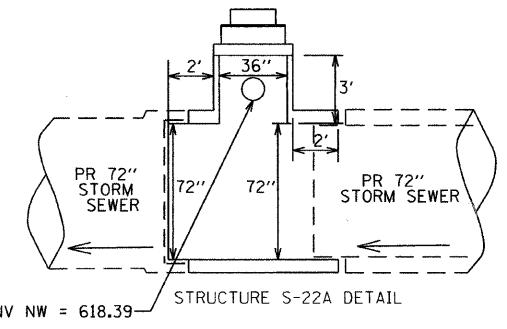


- NOTE:
1. THE TEE AND VALVE SHALL BE MECHANICAL JOINT.
 2. ALL FASTENER HARDWARE (i.e., NUTS, BOLTS, RODS AND WASHERS) ASSOCIATED WITH THE FIRE HYDRANT INSTALLATION SHALL BE STAINLESS STEEL.
 3. THE TEE AND ALL FITTINGS SHALL BE RESTRAINED BY THRUST RESTRAINT WEDGE, RETAINER GLANDS MANUFACTURED WITH TORQUE LIMITING TWIST-OFF NUTS. THE AUXILIARY VALVE AND HYDRANT SHALL BE RESTRAINED BY MUELLER AQUAGRIP OR APPROVED EQUAL.
 4. THE PORT CAPS AND CHAINS SHALL BE PAINTED SILVER.
 5. AUXILIARY VALVE SHALL BE FULL BODIED EPOXY COATED, NON-RISING STEM, RESILIENT WEDGE GATE VALVE WITH FLANGED JOINT END BY MECHANICAL JOINT END.

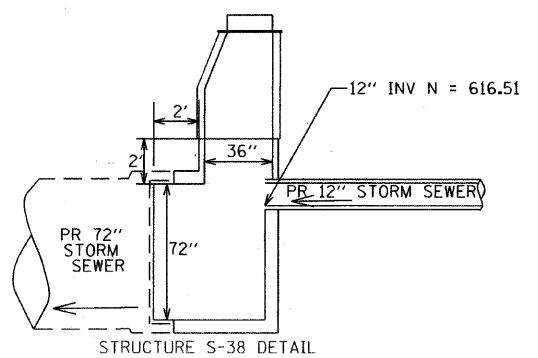
FIRE HYDRANT INSTALLATION



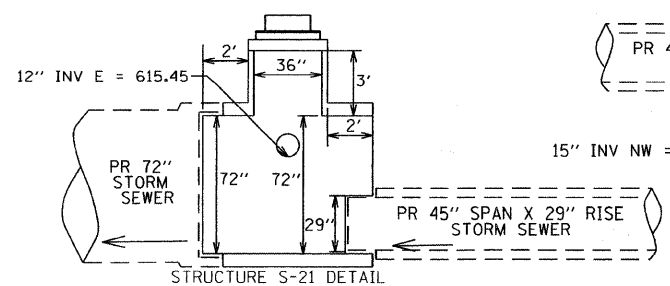
VALVE VAULT, WATER MAIN & VALVE BOX ABANDONMENT DETAIL



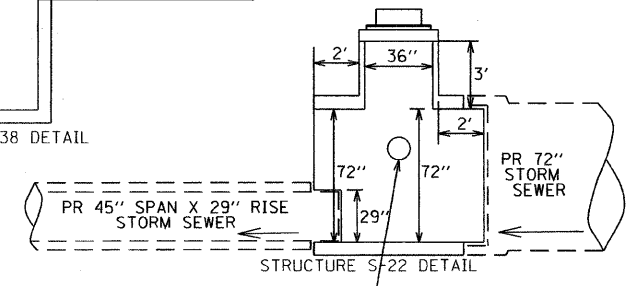
12" INV NW = 618.39 STRUCTURE S-22A DETAIL



STRUCTURE S-38 DETAIL

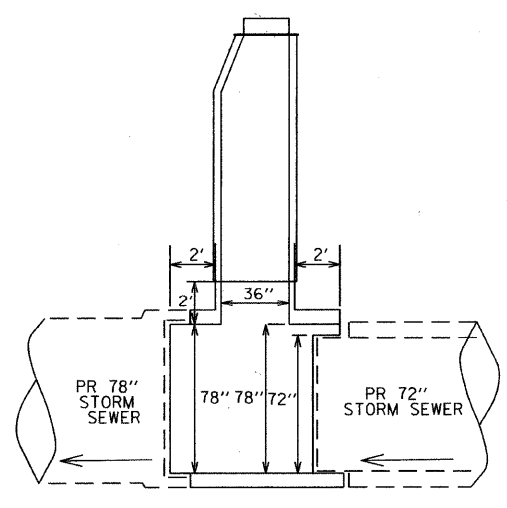


STRUCTURE S-21 DETAIL

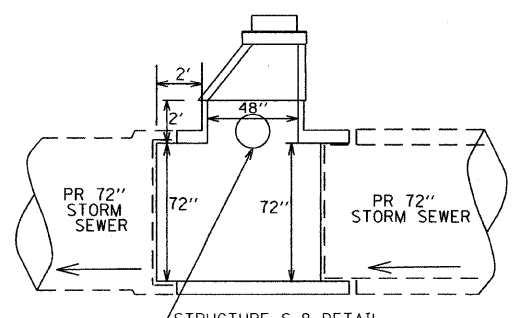


STRUCTURE S-22 DETAIL

NOTE: SEE IDOT HIGHWAY STANDARD 542606-02 FOR APPLICABLE DETAILS NOT SHOWN ON THESE DETAILS.



STRUCTURE S-1 DETAIL



STRUCTURE S-8 DETAIL

PRECAST "T" MANHOLE DETAILS

TranSystems
1475 EAST WOODFIELD ROAD, SUITE 800
SCHAUMBURG, ILLINOIS 60173
(847) 605-9800

FILE NAME =	USER NAME = CECCom	DESIGNED = CEC	REVISED =
g:\work\0045\wood\manholes\02-306-WM_Details.dwg		DRAWN = CEC	REVISED =
	PLOT SCALE = 20.0000 Ft / IN.	CHECKED = DWB	REVISED =
	PLOT DATE = 6/13/2011	DATE = 06/03/2011	REVISED =

**STATE OF ILLINOIS
DEPARTMENT OF TRANSPORTATION**

**U.S. ROUTE 41 (SKOKIE BOULEVARD)
VILLAGE OF SKOKIE WATER MAIN AND PRECAST "T" MANHOLE DETAILS**

F.A.P. RTE.	SECTION	COUNTY	TOTAL SHEETS	SHEET NO.
350	00-00243-00-CH	COOK	142	104
CONTRACT NO. 63566				
FED. ROAD DIST. NO. 7 ILLINOIS FED. AID PROJECT				

SCALE: NOT TO SCALE SHEET NO. 2 OF 2 SHEETS STA. TO STA.