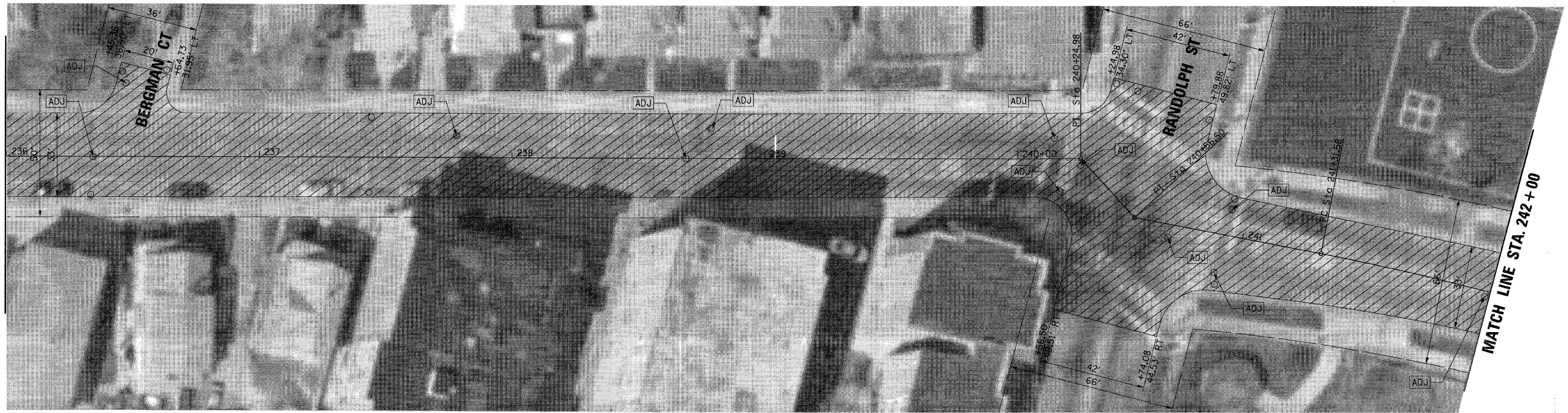


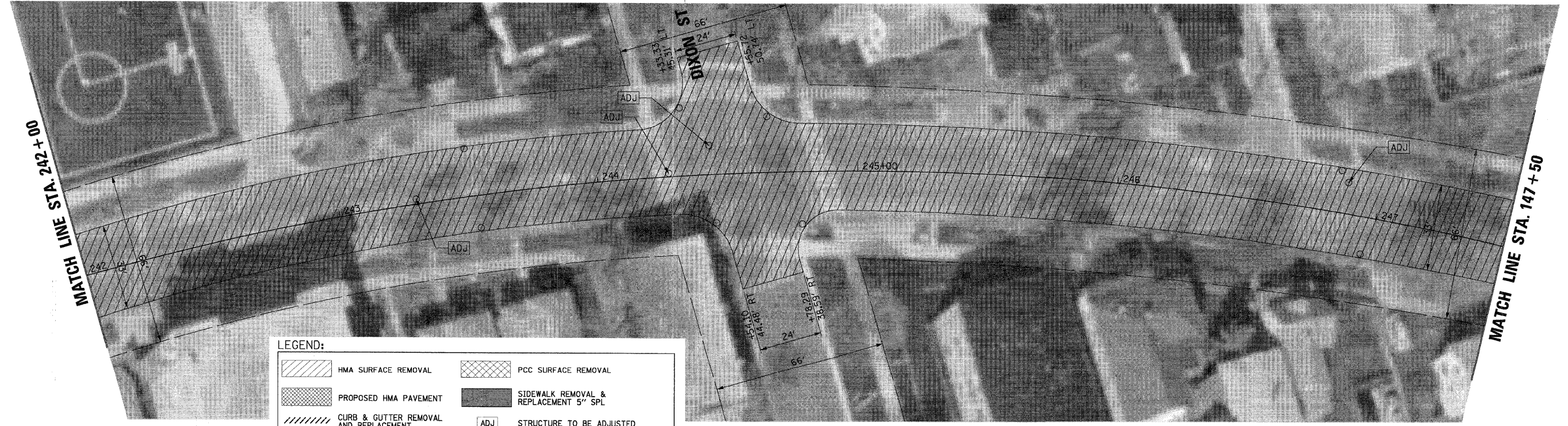


MATCH LINE STA. 236 + 00



MATCH LINE STA. 242 + 00

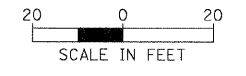
MATCH LINE STA. 242 + 00



MATCH LINE STA. 147 + 50

LEGEND:

	HMA SURFACE REMOVAL		PCC SURFACE REMOVAL
	PROPOSED HMA PAVEMENT		SIDEWALK REMOVAL & REPLACEMENT 5" SPL
	CURB & GUTTER REMOVAL AND REPLACEMENT		STRUCTURE TO BE ADJUSTED
	STRUCTURE TO BE RECONSTRUCTED		STRUCTURE TO BE REMOVED



FILE NAME =	USER NAME = mskorman	DESIGNED -	REVISED -
N:\FORESTPARK\2023\B0836\Civil\REM4_0833936.sht		DRAWN -	REVISED -
PLOT SCALE = 20'		CHECKED -	REVISED -
PLOT DATE = 10/22/2011		DATE -	REVISED -

**STATE OF ILLINOIS
DEPARTMENT OF TRANSPORTATION**

EXISTING CONDITIONS & REMOVAL PLAN

SCALE: SHEET NO. OF SHEETS STA. TO STA.

F.A.U. RTE.	SECTION	COUNTY	TOTAL SHEETS	SHEET NO.
1047	11-00110-00-RS	COOK	25	8
CONTRACT NO. 63603			ILLINOIS FED. AID PROJECT	