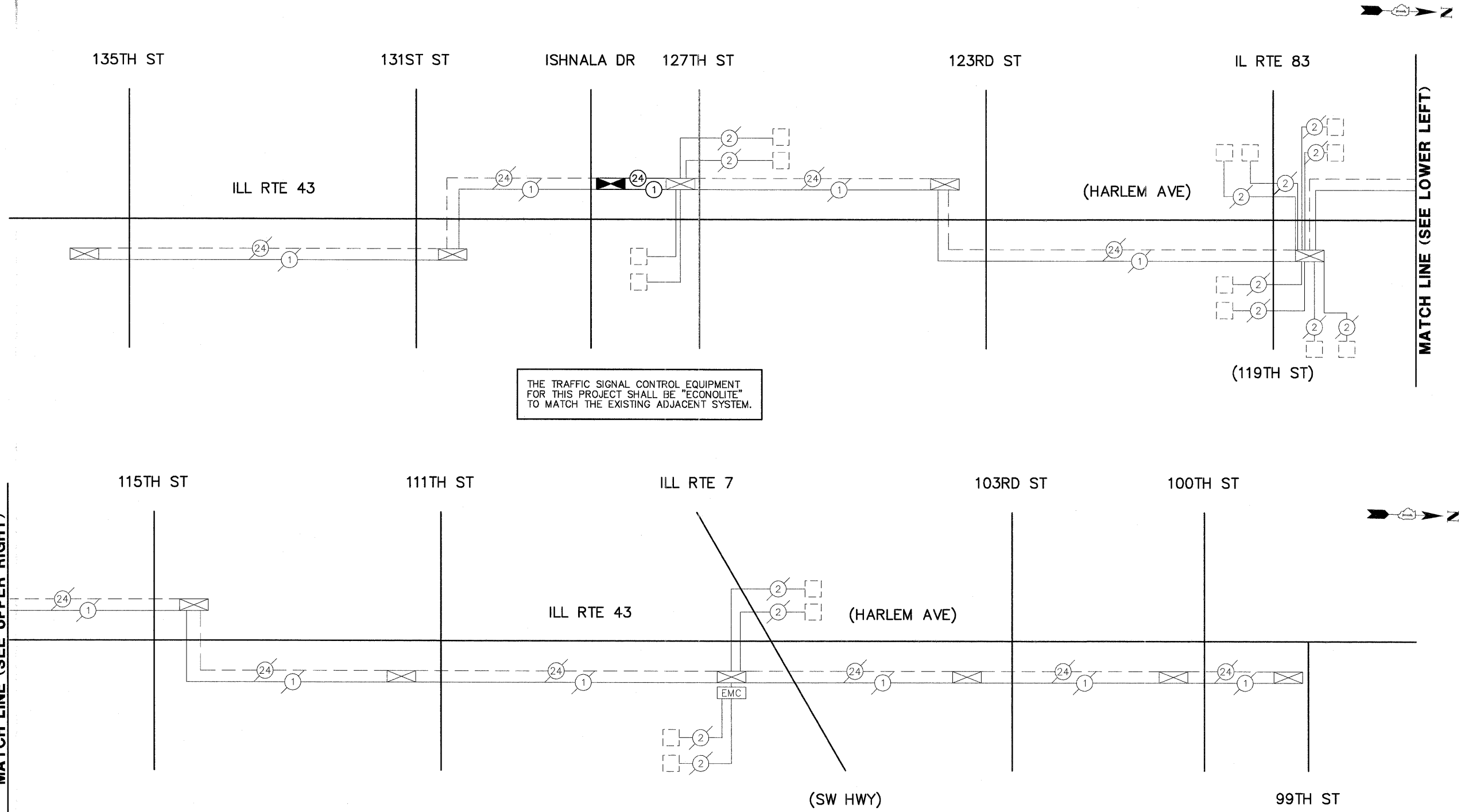


SCHEDULE OF QUANTITIES

INTERCONNECT - ILL RTE 43 FROM 135TH ST TO 99TH ST

NO.	QUANT.	UNIT	DESCRIPTION
1.	1	L SUM	TRAFFIC CONTROL AND PROTECTION, STANDARD 701606
2.	1	L SUM	TRAFFIC CONTROL AND PROTECTION, STANDARD 701701
3.	1	L SUM	TRAFFIC CONTROL AND PROTECTION, STANDARD 701801
4.	1	EACH	MAINTENANCE OF EXISTING TRAFFIC SIGNAL INSTALLATION
5.	991	FOOT	FIBER OPTIC CABLE IN CONDUIT, NO. 62.5/125, MM12F SM12F
6.	991	FOOT	ELECTRIC CABLE IN CONDUIT, TRACER, NO. 14 1C
7.	1	EACH	DRILL EXISTING HANDHOLE
8.	1	EACH	RE-OPTIMIZE TRAFFIC SIGNAL SYSTEM LEVEL 2



THE TRAFFIC SIGNAL CONTROL EQUIPMENT FOR THIS PROJECT SHALL BE "ECONOLITE" TO MATCH THE EXISTING ADJACENT SYSTEM.

MATCH LINE (SEE UPPER RIGHT)

MATCH LINE (SEE LOWER LEFT)

FILE NAME =	2806-240-TR1.dwg
-------------	------------------

USER NAME =	GHA
PLOT SCALE =	1"=1"
PLOT DATE =	11/10/2011

DESIGNED -	JRD
DRAWN -	ZCW
CHECKED -	KLB
DATE -	11/10/2011

REVISED -	
REVISED -	
REVISED -	
REVISED -	

**STATE OF ILLINOIS
DEPARTMENT OF TRANSPORTATION**

**INTERCONNECT SCHEMATIC & SCHEDULE OF QUANTITIES
ILL RTE 43 (HARLEM AVE) & ISHNALA DR**

FAP RTE.	SECTION	COUNTY	TOTAL SHEETS	SHEET NO.
348	10-00047-00-TL	COOK	30	23
CONTRACT #:			63626	
ILLINOIS FED. AID PROJECT				

GHA #2806.242