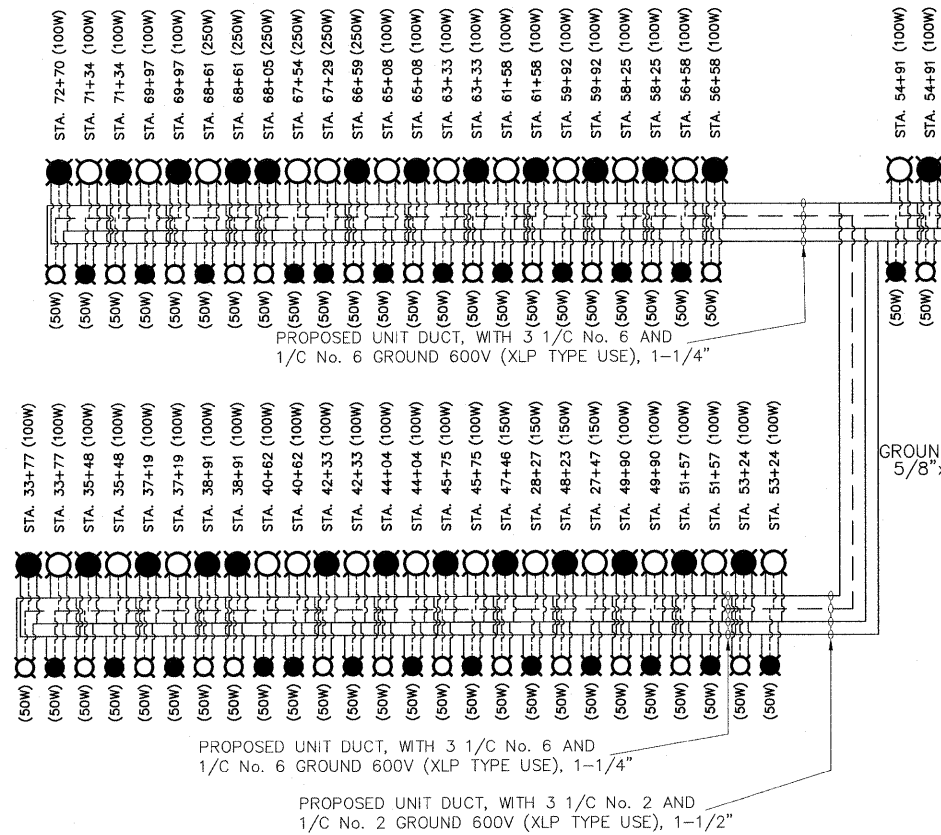


PROPOSED LIGHTING

**OAK PARK AVENUE
28TH STREET TO CERMAK ROAD**



NOTE:
CONTROL WIRING IS NO.12
POWER WIRING IS NO.1/0

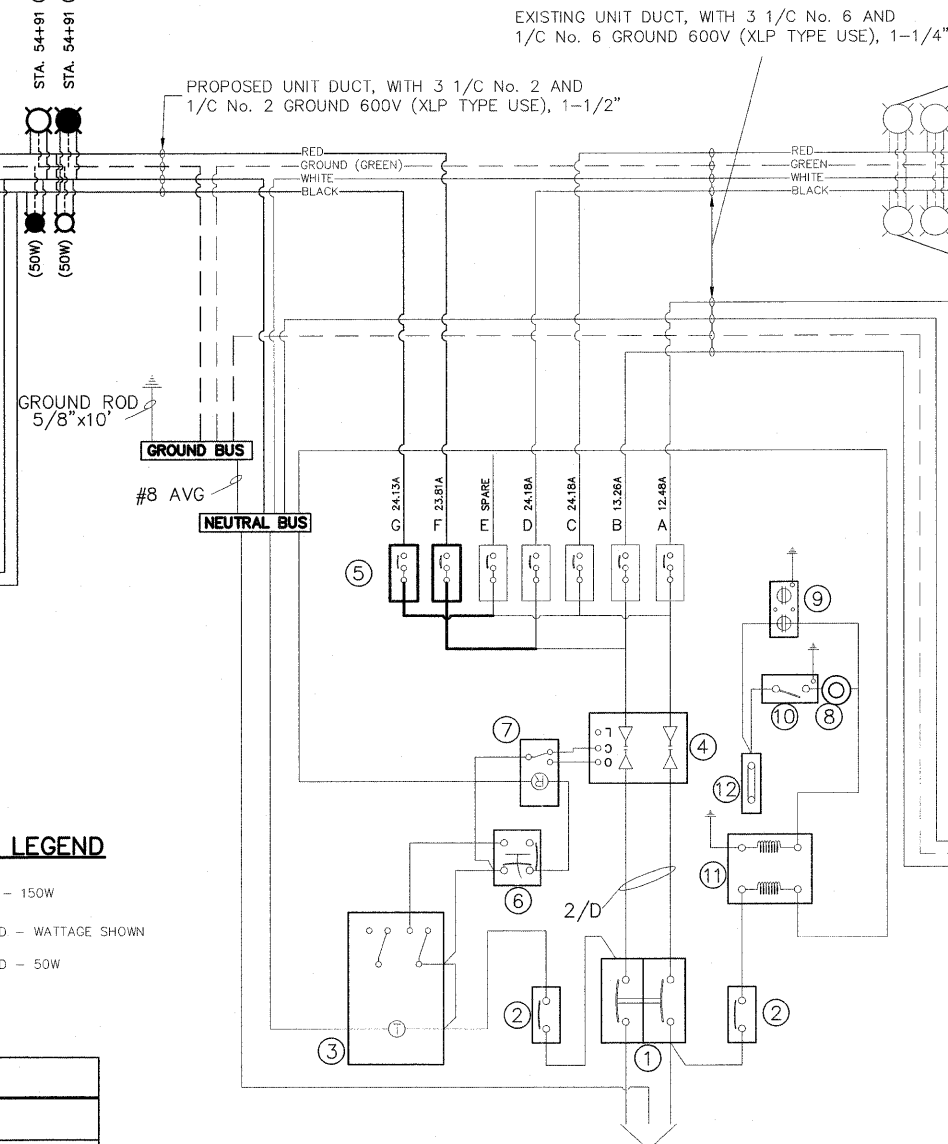
NOTE:
NEUTRAL BUS IS PAINTED WHITE.
GROUND BUS IS PAINTED GREEN.

NOTE:
CIRCUITS E IS SPARE

LUMINAIRE LEGEND

- EXISTING - 150W
- PROPOSED - WATTAGE SHOWN
- PROPOSED - 50W

EXISTING CONTROLLER #2

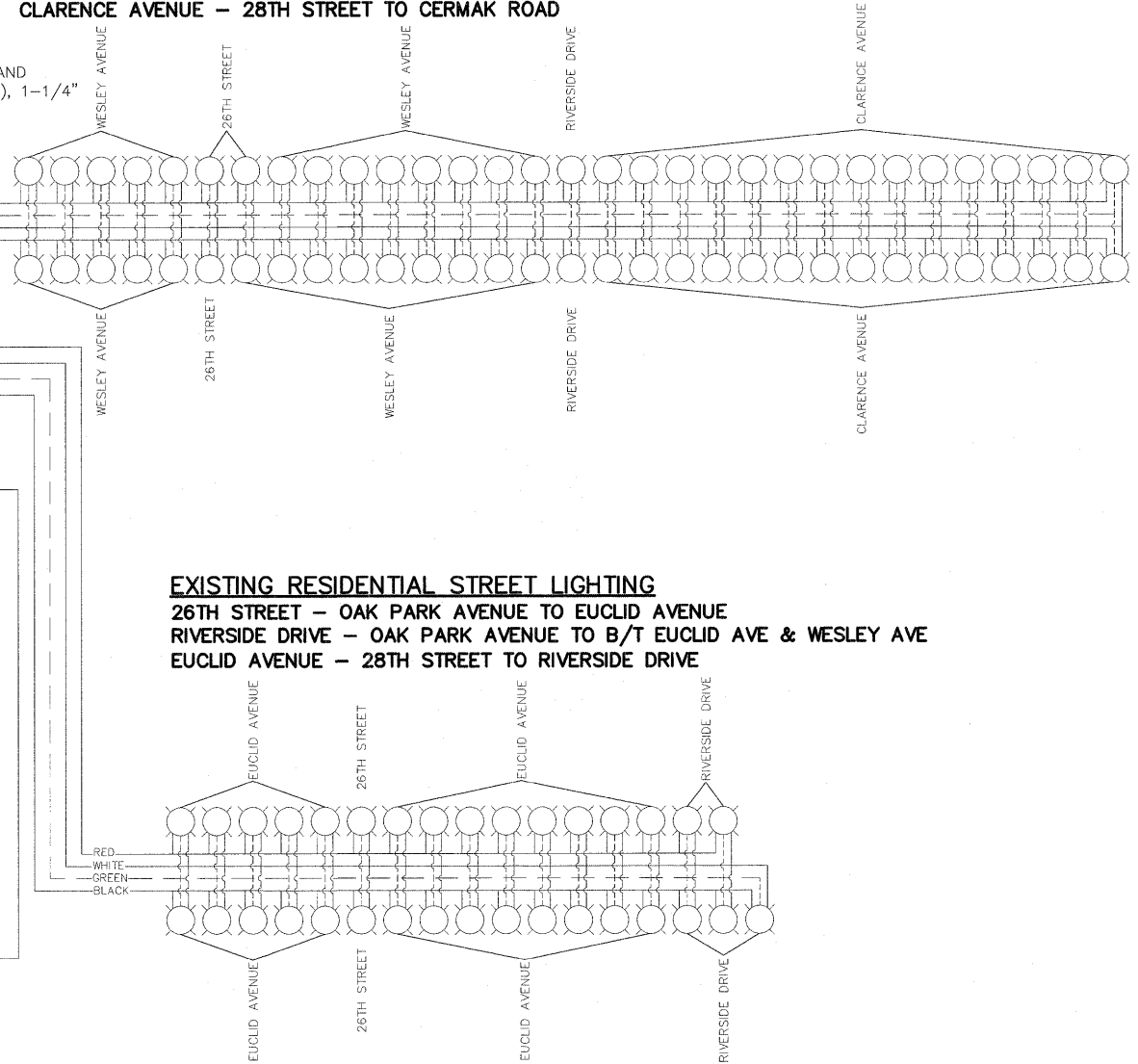


EXISTING SERVICE CABLE 3-1/C NO.1/0,
3 WIRE, 240/480 VOLT, 1 PHASE, 60HZ.

CONTROLLER DIAGRAM

EXISTING RESIDENTIAL STREET LIGHTING

26TH STREET - EUCLID AVENUE TO CLARENCE AVENUE
RIVERSIDE DRIVE - B/T EUCLID AVE & WESLEY AVE TO WESLEY AVENUE
WESLEY AVENUE - 28TH STREET TO RIVERSIDE DRIVE
CLARENCE AVENUE - 28TH STREET TO CERMAK ROAD



EXISTING RESIDENTIAL STREET LIGHTING

26TH STREET - OAK PARK AVENUE TO EUCLID AVENUE
RIVERSIDE DRIVE - OAK PARK AVENUE TO B/T EUCLID AVE & WESLEY AVE
EUCLID AVENUE - 28TH STREET TO RIVERSIDE DRIVE

CONTROLLER - SCHEDULE OF EQUIPMENT

ITEM	QUANTITY	DESCRIPTION
①	1	MAIN BREAKER, 2 POLE, 600V, 150A BASE, 150A NON-INTERCHANGEABLE TRIP INTERRUPTING RATING NEMA - 14000A AT 480V
②	2	CIRCUIT BREAKERS, 1 POLE, 240V, 15A
③	1	TIME CLOCK, 240V, 2 POLE, SINGLE THROW CLOCK WITH SPRING CARRYOVER & ASTRONOMICAL DIAL
④	1	CONTACTOR, 2 POLE, 240V, 150A
⑤	5-EXIST 2-PROP	CIRCUIT BREAKER, 1 POLE, 240V, 100A BOLT-ON TYPE, 50A NON-INTERCHANGEABLE TRIP INTERRUPTING RATING NEMA - 14000A AT 240V (60 A. AT CONT. NO.1 ONLY)
⑥	1	HANDS-OFF-AUTO SWITCH, 240V, 15A
⑦	1	RELAY, DOUBLE POLE, DOUBLE THROW, 240V
⑧	1	WEATHER-PROOF INCANDESCENT LIGHTING FIXTURE WITH 60 WATT, 120V LAMP
⑨	1	DUPLEX RECEPTACLE, 15A G.F.I., 120V
⑩	1	DOOR OPERATED SWITCH TO TURN ON & OFF
⑪	1	1.0KVA, SINGLE PHASE ENCAPSULATED TRANSFORMER, 240x480/120x240 VOLT, 60HZ
⑫	1	FUSE AND HOLDER

CIRCUIT LOAD TABLE

Circuit	Controller #2 = 150A MAIN																										
	A				B				C				D				E				F				G		
Luminaire Wattage	50W	100W	150W	50W	100W	150W	50W	100W	150W	50W	100W	150W	50W	100W	150W	50W	100W	150W	250W	50W	100W	150W	250W				
Red West																											
Number of Lights																											
Amperage																											
Black West																											
Number of Lights																											
Amperage																											
Red East																											
Number of Lights																											
Amperage																											
Black East																											
Number of Lights																											
Amperage																											
Spare																											
Number of Lights																											
Amperage																											
Red West - OP																											
Number of Lights																											
Amperage																											
Black West - OP																											
Number of Lights																											
Amperage																											
Total Amperage																											

FILE NAME = FAU 2775 (OAK PARK AVENUE) FAP 0311 (OGDEN AVENUE) TO FAU 3734 (34TH STREET) FAU 1468 (31ST STREET TO FAU 1453 (CERMAK ROAD) OAK PARK AVENUE ARTERIAL STREET LIGHTING	USER NAME =	DESIGNED - BAH	REVISED - BAH 7-11-11
		DRAWN - BAH	REVISED - BAH 10-14-11
		CHECKED - JEF	REVISED -
		DATE - 5-31-11	REVISED -

**STATE OF ILLINOIS
DEPARTMENT OF TRANSPORTATION**

**CONSTRUCTION DETAILS - EXISTING CONTROLLER #2
W/ PROPOSED LIGHTING SYSTEM ON OAK PARK AVE.**

Frank Novotny & Associates, Inc.
Civil Engineers
325 Midway Drive • Wheelbrook, IL • 60157 • Telephone: (630) 837-8600 • Fax: (630) 837-0132
ILLINOIS PROFESSIONAL DESIGN FIRM NO. 184-000928

F.A.U. RT#	SECTION	COUNTY	TOTAL SHEETS	SHEET NO.
2775	05-00162-00-LS	COOK	25	15
CONTRACT NO. 63628			HPP-3465(002)	

SCALE: NONE SHEET NO. OF SHEETS STA. TO STA.