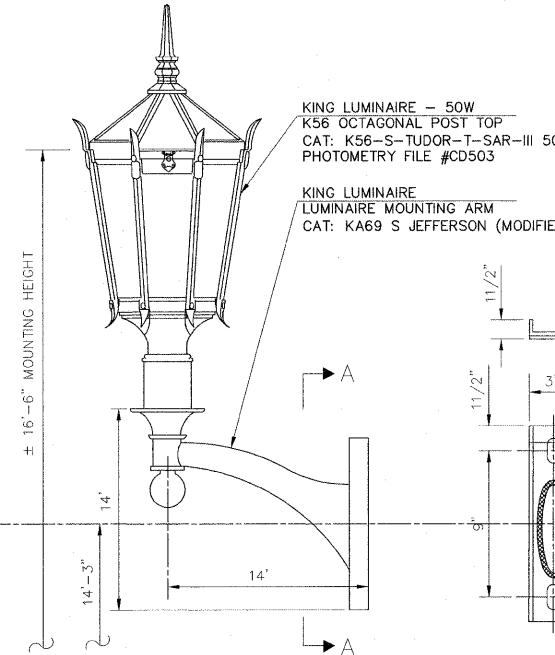
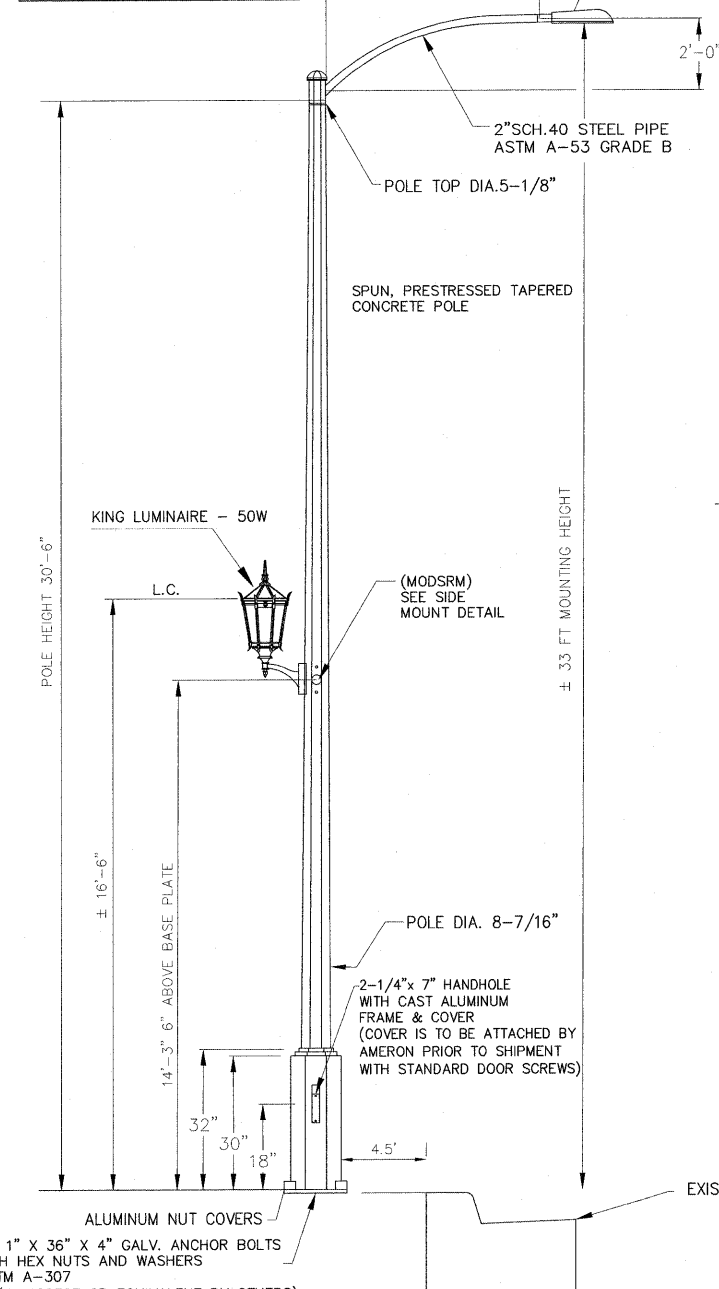
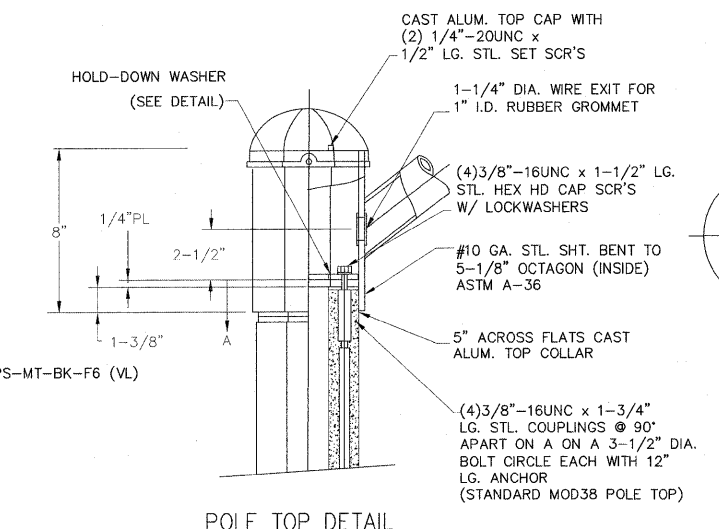


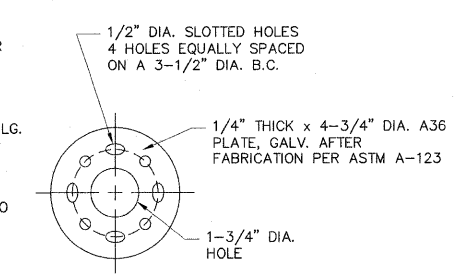
GENERAL ELECTRIC LUMINAIRE
 CAT: # M2AC-10-S-O-H-I-G-MCIII-I-BK
 PHOTOMETRY FILE #GE177285 - 100W & 150W
 PHOTOMETRY FILE #GE177304 - 250W



PEDESTRIAN SIDE LUMINAIRE, ARM AND ARM MOUNTING DETAILS



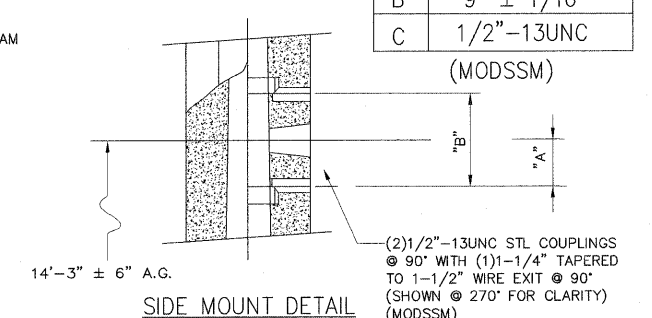
POLE TOP DETAIL



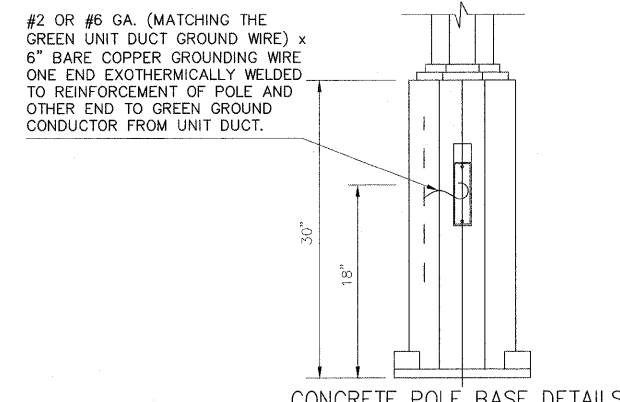
HOLD DOWN WASHER

NOTE:
 HOLE SPACING "A", "B", & COUPLING SIZE "C" FOR FIX. MOUNTING BOLTS

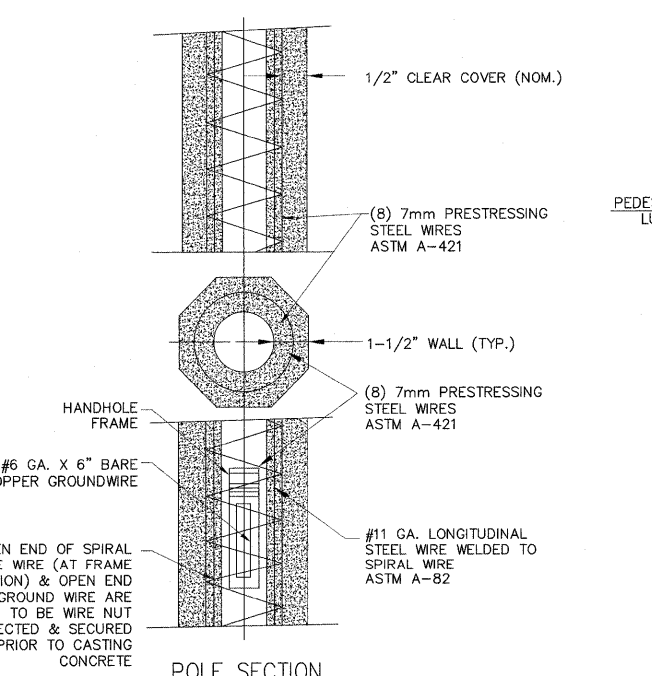
A	4-1/2" ± 1/16"
B	9" ± 1/16"
C	1/2"-13UNC (MODSSM)



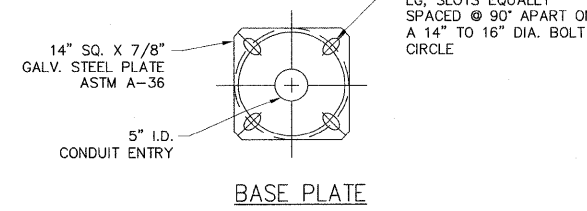
SIDE MOUNT DETAIL



CONCRETE POLE BASE DETAILS



POLE SECTION



BASE PLATE

CONCRETE POLE OCTAGONAL WITH STEEL MAST ARM DETAILS

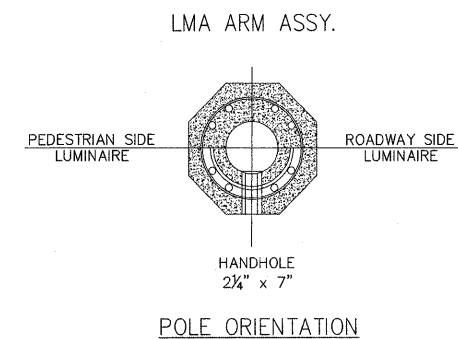
* TO REVIEW CONCRETE POLE FABRICATION DETAILS, PLEASE REFER TO AMERON DRAWING #SK067007 JUNE 2007

MEDIUM BASEPLATE OCTAGONAL ILLINOIS STEP BASE POLE

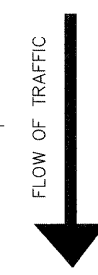
POLE DESIGNATION	POLE HEIGHT A.G. (NOM.)	OVERALL POLE LENGTH	BOLT CIRCLE	BASE O.D.	ULTIMATE G.L. MOMENT (ft. lbs.)	WEIGHT (lbs.)
MB109	30'-5"	30'-3"	16"	12'-3/16"	22,540	1,200

() POLES REQUIRED, EACH WITH 6" GALV. STEEL LMA ASSEMBLY (P/N: MOSP6A)

- NOTES:
- MIX (114S): GRAY NATURAL, LIGHTLY POLISHED FINISH, WITH FLAT WATER SEALER COATING
 - ASTM C-150 TYPE III GRAY CEMENT
 - f'c @ 28 DAYS = 7,000 PSI, USING SPUN CYLINDER TEST.
 - f'c @ 28 DAYS = 5,000 PSI, USING ASTM C-31 CYLINDER TEST.
 - POLES MANUFACTURED PER ASTM C-1089-06 SPECIFICATIONS
 - PROTECTIVE COAT EXPOSED P.C. WIRES AT POLE ENDS.
 - DUE TO THE NATURE AND CHARACTERISTICS OF CONCRETE, SIDE MOUNT INSERT DIMENSIONS CAN ONLY BE TAKEN TO THE NEAREST 1/8"
 - TOP MOUNT LMA IS DESIGNED TO ROTATE TO ANY MATCHING OCTAGONAL FLAT ORIENTATION, PER CUSTOMER REQUIREMENTS.
 - MODFE: POLE BOTTOM PREPARATION FOR FREEZING OR CORROSIVE COASTAL ENVIRONMENT; SEE DOCUMENTATION.
 - MODDCI: CORROSION INHIBITOR MIX MODIFICATION.



POLE ORIENTATION



NOTES

- THE LIGHT POLE SHALL MEET AASHTO DESIGN CRITERIA AND SHALL BE LISTED OR CLASSIFIED BY A UNITED STATES TESTING LABORATORY SUCH AS U/L OR ETL.
- THE CONTRACTOR SHALL FOLLOW THE MANUFACTURER'S INSTALLATION INSTRUCTIONS FOR POLE AND LUMINAIRE. LUMINAIRE SHALL BE INSTALLED AS SOON AS THE POLE IS ERECTED.
- ELECTRICAL EQUIPMENT SHALL BE U/L LISTED (TYP. FOR ALL)
- EXPLANATIONS FOR LUMINAIRE CATALOG NUMBERS CAN BE FOUND IN THE SPECIAL PROVISIONS FOR THIS PROJECT.
- THE LIGHT POLE SHALL BE MADE TO WITHSTAND 90 MPH WIND VELOCITY.

LIGHT POLE AND LUMINAIRE DETAILS

FILE NAME = FAU 2775 (OAK PARK AVENUE)	USER NAME =	DESIGNED - BAH	REVISED - BAH 7-11-11
FAP 0311 (OGDEN AVENUE) TO FAU 3734 (34TH STREET)		DRAWN - BAH	REVISED - BAH 10-14-11
FAU 1468 (31ST STREET TO FAU 1453 (CERMAK ROAD)	PLOT SCALE =	CHECKED - JEF	REVISED -
OAK PARK AVENUE ARTERIAL STREET LIGHTING	PLOT DATE =	DATE - 5-31-11	REVISED -

STATE OF ILLINOIS
 DEPARTMENT OF TRANSPORTATION

CONSTRUCTION DETAILS

SCALE: NONE SHEET NO. OF SHEETS STA. TO STA.

Frank Novotny & Associates, Inc.
 227 Midway Drive • Willmetts, IL • 60177 • Telephone: (630) 837-8500 • Fax: (630) 837-0132
 ILLINOIS PROFESSIONAL DESIGN FIRM NO. 184-000928

F.A.U. R.T.E.	SECTION	COUNTY	TOTAL SHEETS NO.	SHEET NO.
2775	05-00162-00-LS	COOK	25	19

CONTRACT NO. 63628
 FED. ROAD DIST. NO. ILLINOIS FED. AID PROJECT HPP-3465(002)