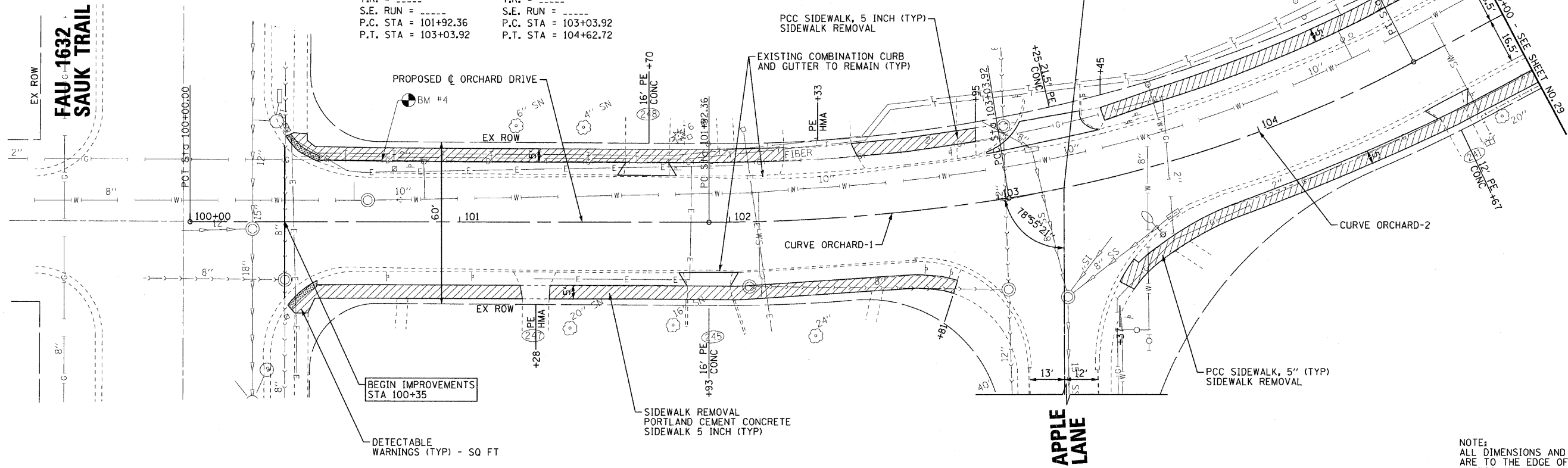


PROP. CURVE ORCHARD-1
 PI STA. = 102+48.26
 $\Delta = 9^\circ 07' 53''$ (LT)
 $D = 8^\circ 11' 06''$
 $R = 700.00'$
 $T = 55.90'$
 $L = 111.56'$
 $E = 2.23'$
 $\theta = N/A$
 $T.R. = \text{---}$
 $S.E. RUN = \text{---}$
 $P.C. STA = 101+92.36$
 $P.T. STA = 103+03.92$

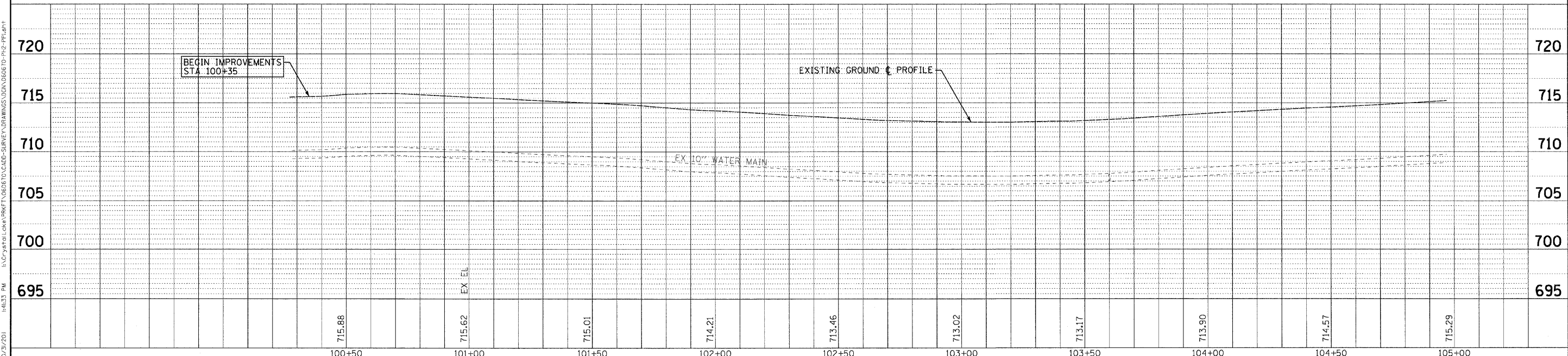
PROP. CURVE ORCHARD-2
 PI STA. = 103+84.05
 $\Delta = 18^\circ 57' 21''$ (LT)
 $D = 11^\circ 56' 12''$
 $R = 480.00'$
 $T = 80.13'$
 $L = 158.80'$
 $E = 6.64'$
 $\theta = N/A$
 $T.R. = \text{---}$
 $S.E. RUN = \text{---}$
 $P.C. STA = 103+03.92$
 $P.T. STA = 104+62.72$

EX ROW
FAU C-1632
SAUK TRAIL



NOTE:
 ALL DIMENSIONS AND ELEVATIONS
 ARE TO THE EDGE OF PAVEMENT
 UNLESS OTHERWISE NOTED.

ORCHARD DRIVE



DESIGNED - TLH	REVISED -
DRAWN - UKB	REVISED -
CHECKED - TAO	REVISED -
DATE - 10/24/11	FILE - 060670-Ph2-PPI.sht

STATE OF ILLINOIS
ORCHARD DRIVE IMPROVEMENTS

GEOMETRIC PLAN AND PROFILE
ORCHARD DRIVE

SCALE: HORIZ. 1"=20' / VERT. 1"=5'

STA. 100+66 TO STA. 105+00

F.A.U. RTE. 2836	SECTION 06-00090-00-FP	COUNTY COOK	TOTAL SHEETS 200	SHEET NO. 28
FED. ROAD DIST. NO. 1 ILLINOIS			CONTRACT NO. 63635	
FED. AID PROJECT			M-8003(661)	

COPYRIGHT © 2011 BY BAXTER & WOODMAN, INC.
 STATE OF ILLINOIS - PROFESSIONAL DESIGN FIRM
 2630 S. WOODSTOCK AVE., SUITE 100, CHICAGO, IL 60606
 TEL: 312.467.1000 FAX: 312.467.1001