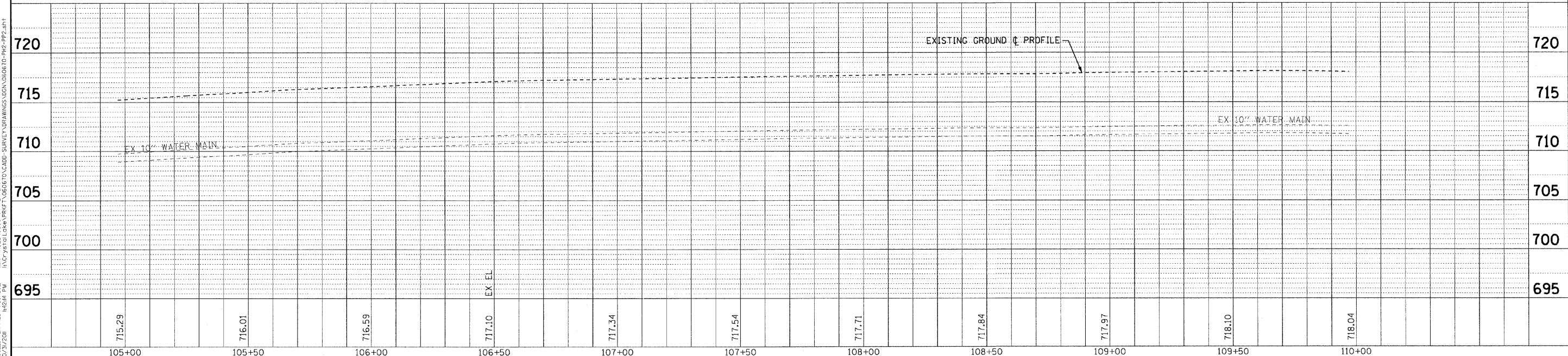


PROP. CURVE ORCHARD-3
 PI STA. = 109+01.64
 $\Delta = 27^\circ 48' 47''$ (LT)
 $D = 19^\circ 45' 26''$
 $R = 290.00'$
 $T = 71.80'$
 $L = 140.77'$
 $E = 8.76'$
 $e = N/A$
 $T.R. = \text{---}$
 $S.E. RUN = \text{---}$
 $P.C. STA = 108+29.84$
 $P.T. STA = 109+70.61$

ORCHARD DRIVE

NOTE:
 ALL DIMENSIONS AND ELEVATIONS
 ARE TO THE EDGE OF PAVEMENT
 UNLESS OTHERWISE NOTED.



COPYRIGHT © 2011 BY BAXTER & WOODMAN, INC.
 STATE OF ILLINOIS - PROFESSIONAL DESIGN FIRM
 2630 S. WOODMAN ROAD, SUITE 200, CHICAGO, IL 60608
 TEL: 773.440.1234 FAX: 773.440.1235
 WWW.BAXTERANDWOODMAN.COM

| | |
|-----------------|---------------------------|
| DESIGNED - TLH | REVISED - |
| DRAWN - UKB | REVISED - |
| CHECKED - TAO | REVISED - |
| DATE - 10/24/11 | FILE - 060670-PH2-PP2.shx |

STATE OF ILLINOIS
ORCHARD DRIVE IMPROVEMENTS

| | |
|------------------------------------|----------------------------|
| GEOMETRIC PLAN AND PROFILE | |
| ORCHARD DRIVE | |
| SCALE: HORIZ. 1"=20' / VERT. 1"=5' | STA. 105+00 TO STA. 110+00 |

| | | | | |
|--------------------------------|------------------------|------------------|--------------------|--------------|
| F.A.U. RTE. 2836 | SECTION 06-00090-00-FP | COUNTY COOK | TOTAL SHEETS 200 | SHEET NO. 29 |
| FED. ROAD DIST. NO. 1 ILLINOIS | | FED. AID PROJECT | CONTRACT NO. 63635 | |
| M-80036661 | | | | |