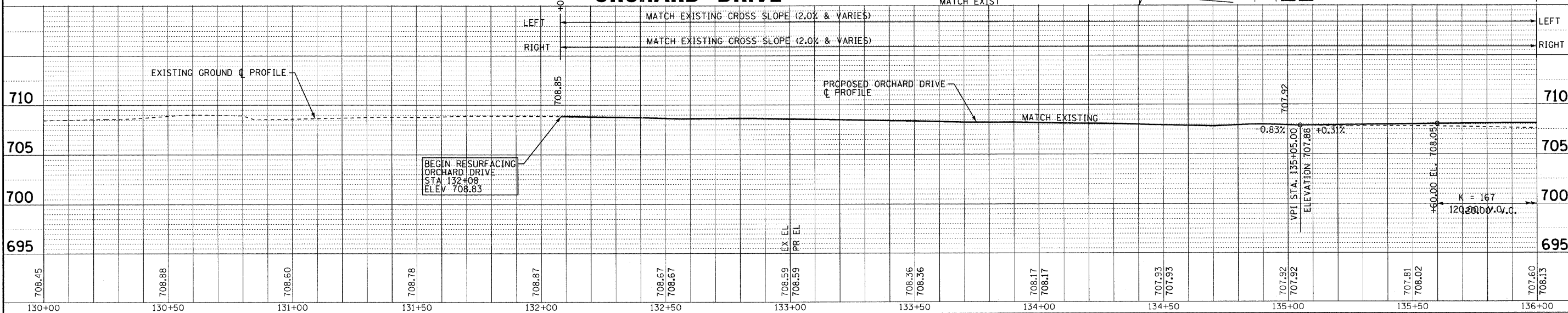
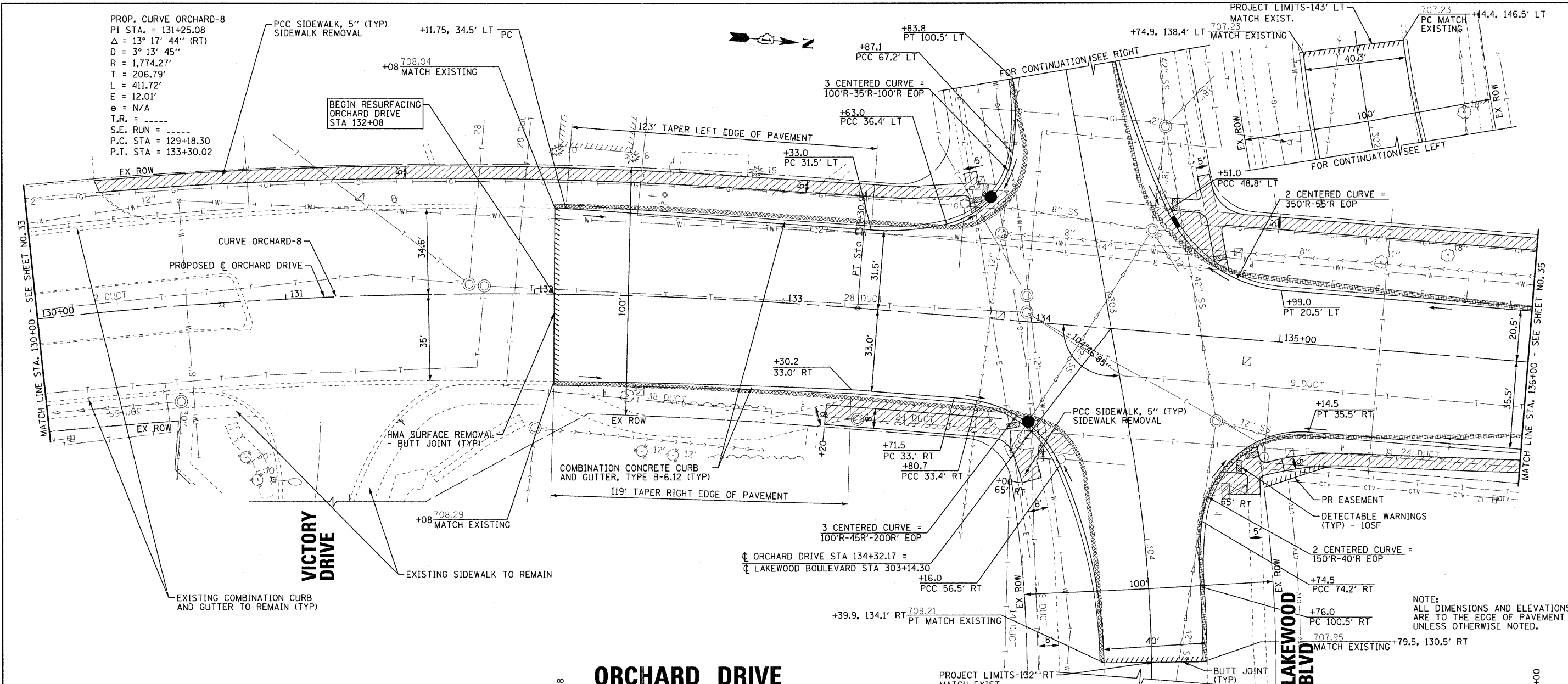


PROP. CURVE ORCHARD-8
 PI STA. = 131+25.08
 $\Delta = 13^\circ 17' 44''$ (RT)
 $D = 3^\circ 13' 45''$
 $R = 1,774.27'$
 $T = 206.79'$
 $L = 411.72'$
 $E = 12.01'$
 $\epsilon = N/A$
 T.R. = -----
 S.E. RUN = -----
 P.C. STA = 129+18.30
 P.T. STA = 133+30.02



DESIGNED - TLH	REVISED -
DRAWN - UKB	REVISED -
CHECKED - TAO	REVISED -
DATE - 10/24/11	FILE - 060670-PH2-PP7.sht

STATE OF ILLINOIS
ORCHARD DRIVE IMPROVEMENTS

GEOMETRIC PLAN AND PROFILE
ORCHARD DRIVE

F.A.J. RTE. 2836	SECTION 06-00090-00-FP	COUNTY COOK	TOTAL SHEETS 200	SHEET NO. 34
CONTRACT NO. 63635				
FED. ROAD DIST. NO. 1 ILLINOIS FED. AID PROJECT M-8003661				

SCALE: HORIZ. 1"=20' / VERT. 1"=5'

STA. 130+00 TO STA. 136+00

COPYRIGHT © 2011 BY BAXTER & WOODMAN, INC.
 STATE OF ILLINOIS - PROFESSIONAL DESIGN FIRM
 LICENSE NO. - BR 0077208
 1127 S. FLORENCE AVE., SUITE 100, CHICAGO, IL 60644
 TEL: 312.467.7200 FAX: 312.467.7201
 WWW.BAXTERANDWOODMAN.COM