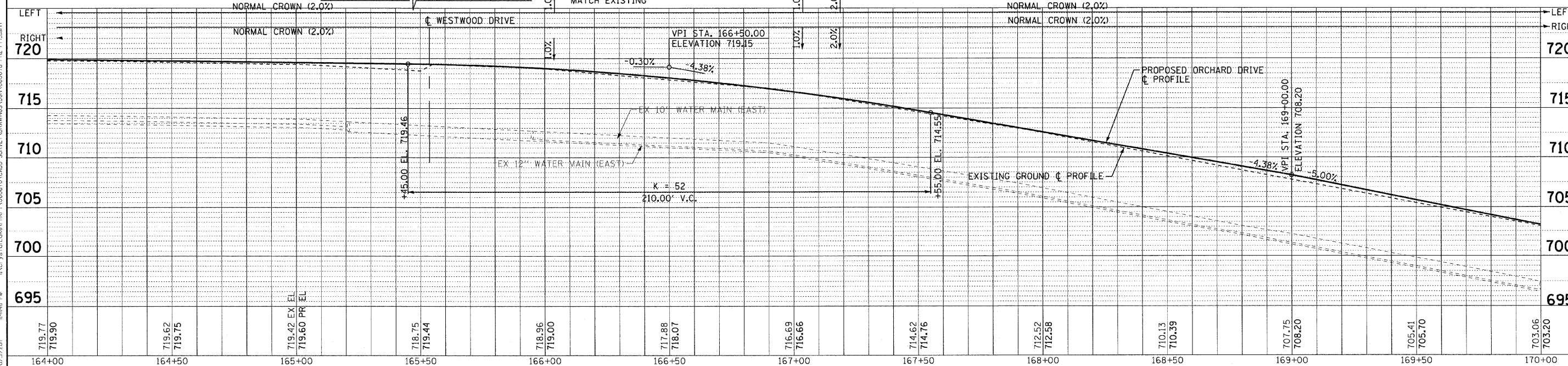


ORCHARD DRIVE

LEGEND:
 = TREE REMOVAL

NOTE:
 ALL DIMENSIONS AND ELEVATIONS
 ARE TO THE EDGE OF PAVEMENT
 UNLESS OTHERWISE NOTED.



CONTRACT NO. 201 BY BAXTER & WOODMAN, INC.
 STATE OF ILLINOIS PROFESSIONAL ENGINEER
 LICENSE NO. 184-00021, EXPIRES 4/30/2013
 26June10 10/23/2011 14:48 PM
 ...\\p01d01\proj\1022\344\...PHASE2\060670-PH2-PP13.dwg
 R:\C\981\01\060670\CADD\SURVEY\DRAWINGS\060670-PH2-PP13.dwg

DESIGNED - TLH	REVISED -
DRAWN - UKB	REVISED -
CHECKED - TAO	REVISED -
DATE - 10/24/11	FILE - 060670-PH2-PP13.shx

STATE OF ILLINOIS
 ORCHARD DRIVE IMPROVEMENTS

GEOMETRIC PLAN AND PROFILE
 ORCHARD DRIVE

SCALE: HORIZ. 1"=20' / VERT. 1"=5'
 STA. 164+00 TO STA. 170+00

F.A.U. RTE. 2836	SECTION 06-00090-00-FP	COUNTY COOK	TOTAL SHEETS 200	SHEET NO. 40
FED. ROAD DIST. NO. 1 ILLINOIS			FED. AID PROJECT M-8003166J	
CONTRACT NO. 63635				