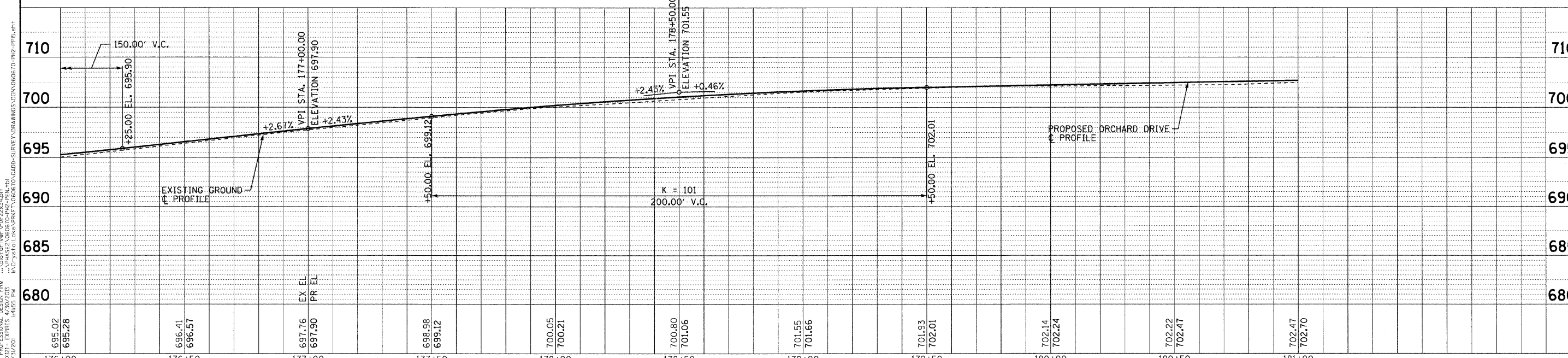
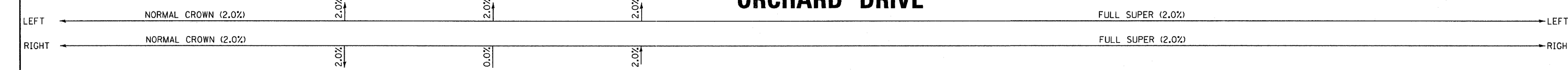


PROP. CURVE ORCHARD-11
 PI STA. = 179+77.00
 $\Delta = 29^\circ 57' 24''$ (L.T.)
 $D = 9^\circ 32' 57''$
 $R = 600.00'$
 $T = 160.53'$
 $L = 313.71'$
 $E = 21.10'$
 $e = 2\%$
 $T.R. = 60'$
 $S.E. RUN = 60'$
 $P.C. STA = 178+16.47$
 $P.T. STA = 181+30.18$

NOTE:
 ALL DIMENSIONS AND ELEVATIONS
 ARE TO THE EDGE OF PAVEMENT
 UNLESS OTHERWISE NOTED.

ORCHARD DRIVE



COPYRIGHT © 2015 BY BAXTER & WOODMAN, INC.
 STATE OF ILLINOIS - PROFESSIONAL DESIGN FIRM
 NO. - B-060670-00-PP15-001
 02/27/2015
 PROJECT: ILLINOIS STATE ROAD DISTRICT NO. 1
 COUNTY: COOK COUNTY
 PROJECT: 06-00090-00-FP
 SHEET: 200 OF 42
 FILE: 060670-PP15.sht

	DESIGNED - TLH	REVISED -	STATE OF ILLINOIS ORCHARD DRIVE IMPROVEMENTS	GEOMETRIC PLAN AND PROFILE ORCHARD DRIVE		F.A.U. RTE.	SECTION	COUNTY	TOTAL SHEETS	SHEET NO.
	DRAWN - UKB	REVISED -				2836	06-00090-00-FP	COOK	200	42
	CHECKED - TAO	REVISED -				CONTRACT NO. 63635				
	DATE - 10/24/11	FILE - 060670-PP15.sht		SCALE: HORIZ. 1"=20' / VERT. 1"=5'		STA. 176+00 TO STA. 181+00		FED. ROAD DIST. NO. 1 ILLINOIS FED. AID PROJECT M-8003661		