

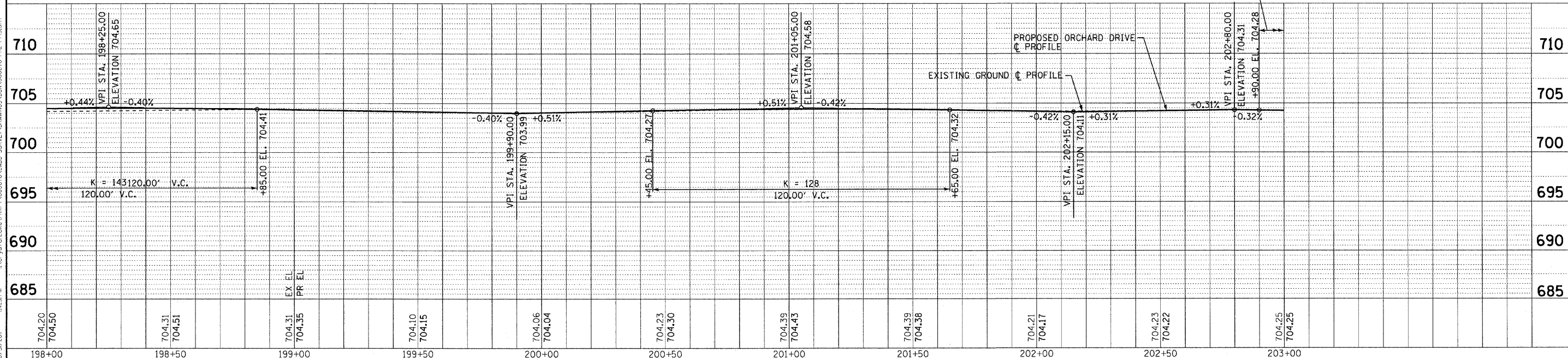
DRIVEWAY PAVEMENT REMOVAL
 AGGREGATE BASE COURSE, TYPE B 4"
 PORTLAND CEMENT CONCRETE DRIVEWAY
 PAVEMENT, 6 INCH (TYP)

PROP. CURVE ORCHARD-14
 PI STA. = 202+30.16
 $\Delta = 35^\circ 51' 36''$ (RT)
 $D = 6^\circ 39' 44''$
 $R = 860.00'$
 $T = 278.27'$
 $L = 538.25'$
 $e = 43.90'$
 $e = NC$
 $T.R. = \text{-----}$
 $S.E. RUN = \text{-----}$
 P.C. STA = 199+51.89
 P.T. STA = 204+90.15

LEFT ← NORMAL CROWN (2.0%) → LEFT
 RIGHT ← NORMAL CROWN (2.0%) → RIGHT

ORCHARD DRIVE

NOTE:
 ALL DIMENSIONS AND ELEVATIONS
 ARE TO THE EDGE OF PAVEMENT
 UNLESS OTHERWISE NOTED.



	DESIGNED - TLH	REVISED -	STATE OF ILLINOIS ORCHARD DRIVE IMPROVEMENTS	GEOMETRIC PLAN AND PROFILE ORCHARD DRIVE		F.A.U. RTE. 2836	SECTION 06-00090-00-FP	COUNTY COOK	TOTAL SHEETS 200	SHEET NO. 46
	DRAWN - LKB	REVISED -		SCALE: HORIZ. 1"=20' / VERT. 1"=5'	STA. 198+00 TO STA. 203+00	FED. ROAD DIST. NO. 1	ILLINOIS	FED. AID PROJECT	M-8003661	CONTRACT NO. 63635
	CHECKED - TAO	REVISED -								
	DATE - 10/24/11	FILE - 060670-PH2-PP19.sht								

COPYRIGHT © 2011 BY BAXTER & WOODMAN, INC.
 STATE OF ILLINOIS - PROFESSIONAL DESIGN FIRM
 LICENSE NO. - BF 0027233
 2030 S. WOODSTOCK AVE. SUITE 200
 CHICAGO, IL 60612
 TEL: 312.467.1000 FAX: 312.467.1001
 WWW.BAXTERANDWOODMAN.COM