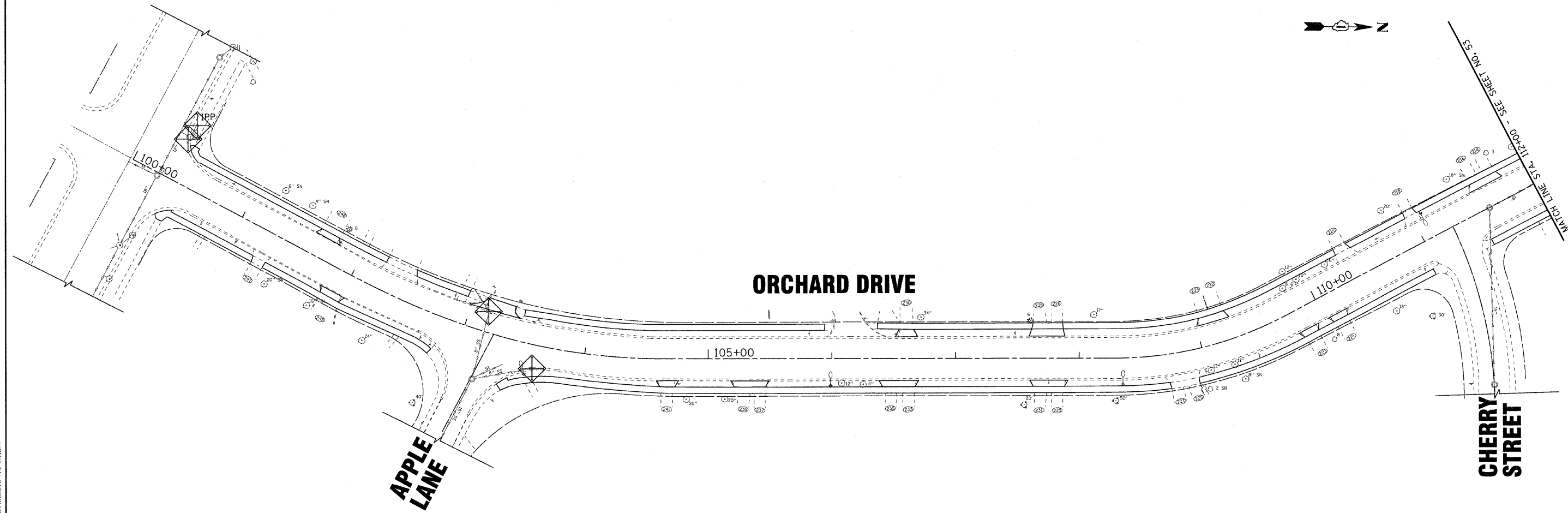
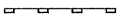





GENERAL SOIL EROSION AND SEDIMENT CONTROL NOTES

FOR NOTES SEE SHEET 55



- LEGEND**
-  PERIMETER EROSION BARRIER
 -  INLET FILTERS
 -  INLET AND PIPE PROTECTION
 -  TEMPORARY DITCH CHECKS

COPYRIGHT © 2011 BY BAXTER & WOODMAN, INC.
 STATE OF ILLINOIS - PROFESSIONAL DESIGN FIRM
 2836 W. 116TH ST., MARIETTA, IL 62426
 TEL: 618-242-1100 FAX: 618-242-1101
 WWW.BAXTERANDWOODMAN.COM



DESIGNED - TLH	REVISED -
DRAWN - CJC	REVISED -
CHECKED - LDH	REVISED -
DATE - 10/24/11	FILE - 060670-PH2-ERI.shx

**STATE OF ILLINOIS
ORCHARD DRIVE IMPROVEMENTS**

**EROSION CONTROL PLAN
ORCHARD DRIVE**

SCALE: 1"=40'

STA. 100+00 TO STA. 112+00

F.A.J. RTE.	SECTION	COUNTY	TOTAL SHEETS	SHEET NO.
2836	06-00090-00-FP	COOK	200	52
FED. ROAD DIST. NO. 1 ILLINOIS FED. AID PROJECT			CONTRACT NO. 63635	
			M-8003(661)	