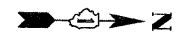
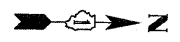
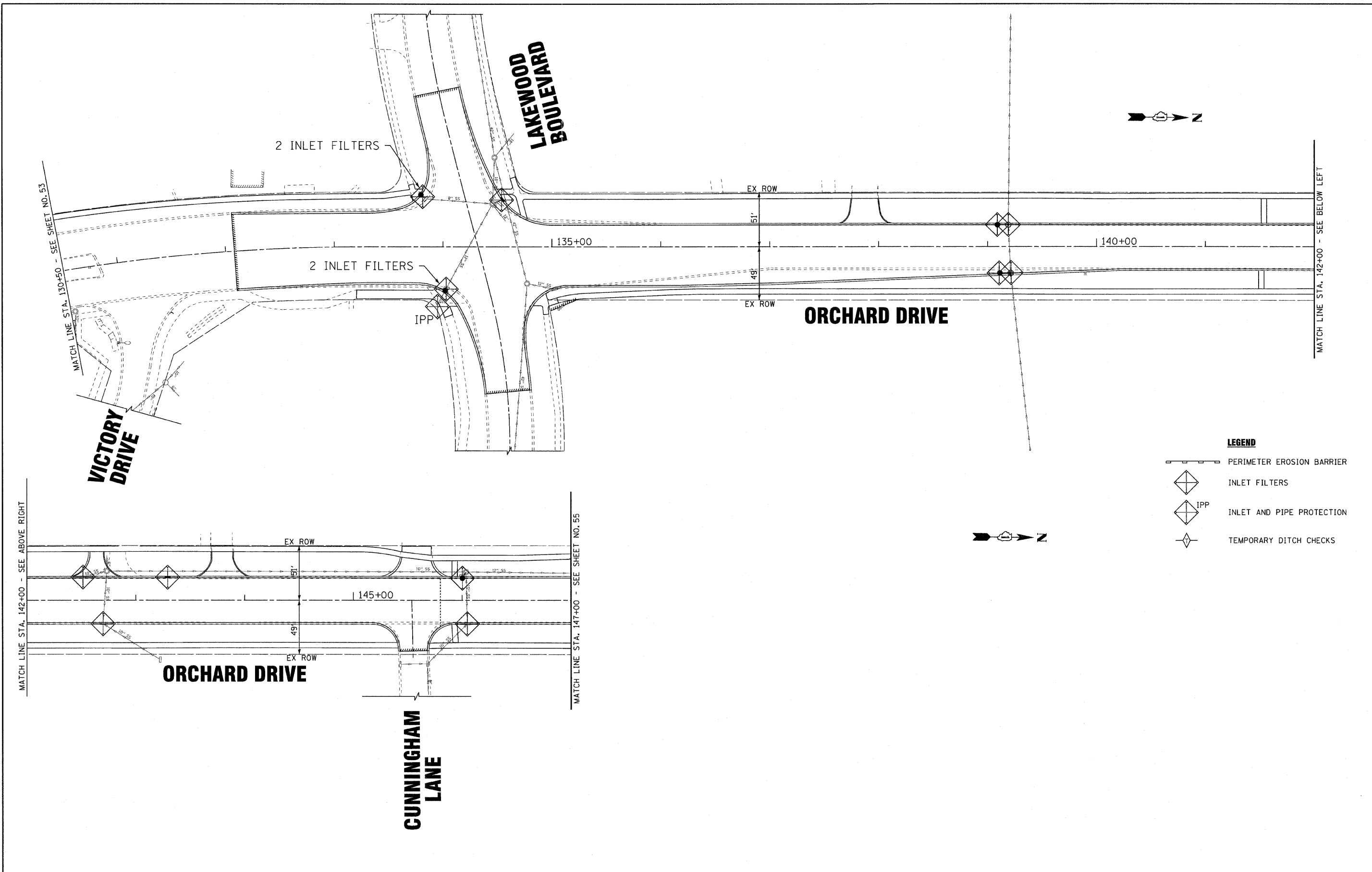


COPYRIGHT © 2011 BY BAXTER & WOODMAN, INC.
 STATE OF ILLINOIS - PROFESSIONAL DESIGN FIRM
 LICENSE NO. 06-00090-00-PP
 PROJECT NO. 060670-PH2-ER3
 DATE 10/24/11
 FILE - 060670-PH2-ER3.sht



LEGEND

- PERIMETER EROSION BARRIER
- INLET FILTERS
- INLET AND PIPE PROTECTION
- TEMPORARY DITCH CHECKS



DESIGNED -	TLH	REVISED -	
DRAWN -	CJC	REVISED -	
CHECKED -	LDH	REVISED -	
DATE -	10/24/11	FILE -	060670-PH2-ER3.sht

**STATE OF ILLINOIS
 ORCHARD DRIVE IMPROVEMENTS**

**EROSION CONTROL PLAN
 ORCHARD DRIVE**

SCALE: 1"=40'
 STA. 130+00 TO STA. 147+00

F.A.U. RTE.	SECTION	COUNTY	TOTAL SHEETS	SHEET NO.
2836	06-00090-00-PP	COOK	200	54
FED. ROAD DIST. NO. 1 ILLINOIS FED. AID PROJECT			CONTRACT NO. 63635	
			M-8003661	