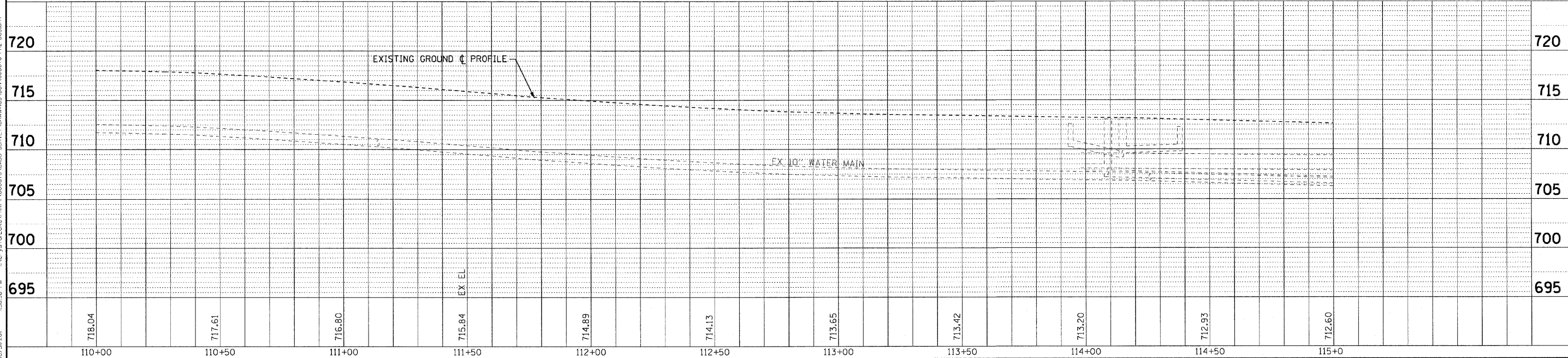


ORCHARD DRIVE



COPYRIGHT © 2011 BY BAXTER & WOODMAN, INC.
 STATE OF ILLINOIS - PROFESSIONAL DESIGN FIRM
 LICENSE NO. - 06-00090-00-00
 2836
 PROJECT NO. - 060670-PH2-DU3
 FILE - 060670-PH2-DU3.shp

	DESIGNED - AMM	REVISED -	STATE OF ILLINOIS ORCHARD DRIVE IMPROVEMENTS	DRAINAGE AND UTILITY ORCHARD DRIVE		F.A.J. RTE. 2836	SECTION 06-00090-00-FP	COUNTY COOK	TOTAL SHEETS 200	SHEET NO. 63
	DRAWN - MAC	REVISED -				CONTRACT NO. 63635				
	CHECKED - TAO	REVISED -								
	DATE - 10/24/11	FILE - 060670-PH2-DU3.shp								
				SCALE: HORIZ. 1"=20' / VERT. 1"=5'		STA. 110+00 TO STA. 115+00		FED. ROAD DIST. NO. 1 ILLINOIS FED. AID PROJECT M-8003661		