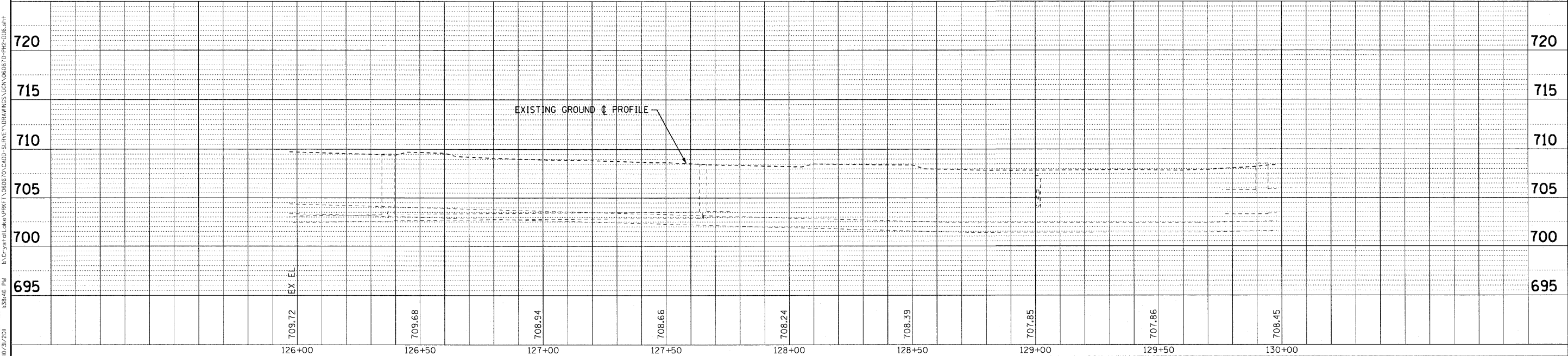


ORCHARD DRIVE



COPYRIGHT © 2011 BY BAXTER & WOODMAN, INC.
 STATE OF ILLINOIS - PROFESSIONAL DESIGN FIRM
 2011 DEC 20 10:37 AM
 ...\\baxter\server\pdp\22634.dwg
 ...\\baxter\server\pdp\22634.dwg
 ...\\baxter\server\pdp\22634.dwg



DESIGNED - AMM	REVISED -
DRAWN - MAC	REVISED -
CHECKED - TAO	REVISED -
DATE - 10/24/11	FILE - 060670-PH2-DU6.shx

STATE OF ILLINOIS ORCHARD DRIVE IMPROVEMENTS

DRAINAGE AND UTILITY ORCHARD DRIVE

SCALE: HORIZ. 1"=20' / VERT. 1"=5'

STA. 126+00 TO STA. 130+00

F.A.U. RTE. 2836	SECTION 06-00090-00-FP	COUNTY COOK	TOTAL SHEETS 200	SHEET NO. 66
FED. ROAD DIST. NO. 1 ILLINOIS FED. AID PROJECT M-8003661				
CONTRACT NO. 63635				